

P
R
O
D
U
C
T
G
U
I
D
E

RIVA 110'

Dolcevita



" A life of heedless pleasure and luxury "
- Dolcevita





DNA

RIVA FAMILY LINEAGE

MULTIPLE REGION LAYOUT CONFIGURATIONS

DIGITAL MANUAL

MULTIPLE EXTERIOR STORAGE

RAISED PILOT HOUSE

INTEGRATED DASHBOARD

FLYBRIDGE CONNECTED WITH BOW

FLYBRIDGE SIDE BALCONY

BOW GARAGE

MULTIPLE BOW AREA CONFIGURATIONS

SPIDER FRAME SALON STRUCTURE

270° GLASS VIEW NEW LIVING CONCEPT

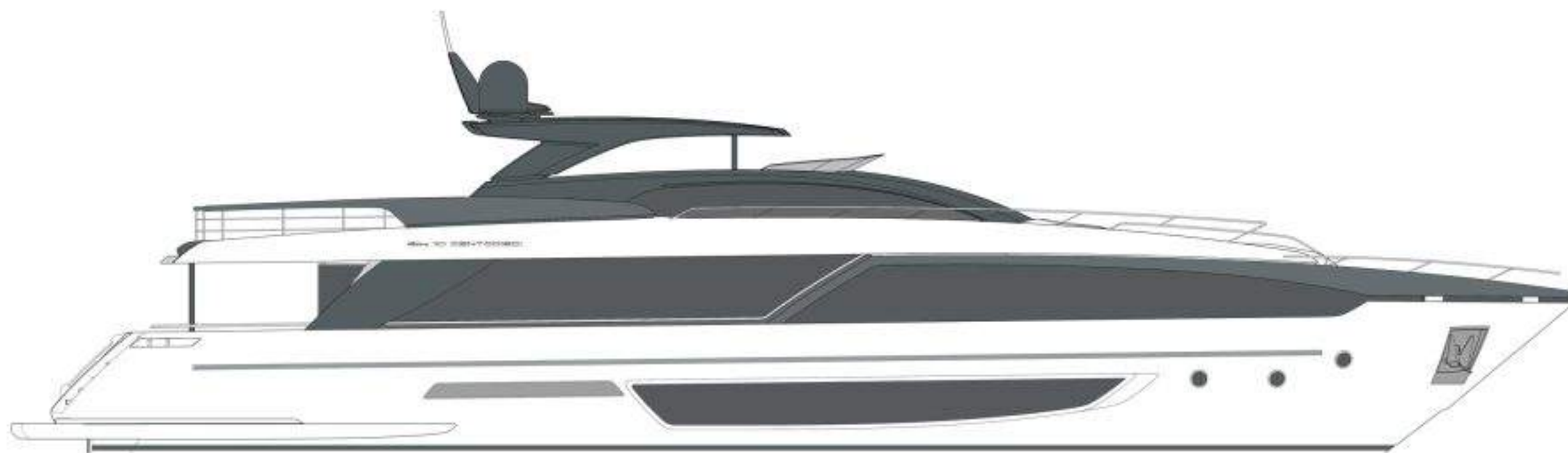
FULL HEIGHT OPENABLE SIDE SALON DOORS

TWO FOLDABLE BALCONIES

FG EXCLUSIVE SUBMERSIBLE HATCH



PROFILE





DIGITAL MANUAL

DIGITAL MANUAL

YES

Digital manual was developed by Ferretti Group engineering department. To help the crew to quickly understand the use of the yacht, perfectly replaced the old thick paper manuals. Riva 110' is the first model that is available the digital manual in the Riva range.



Search by picture



Search by content



Search by test



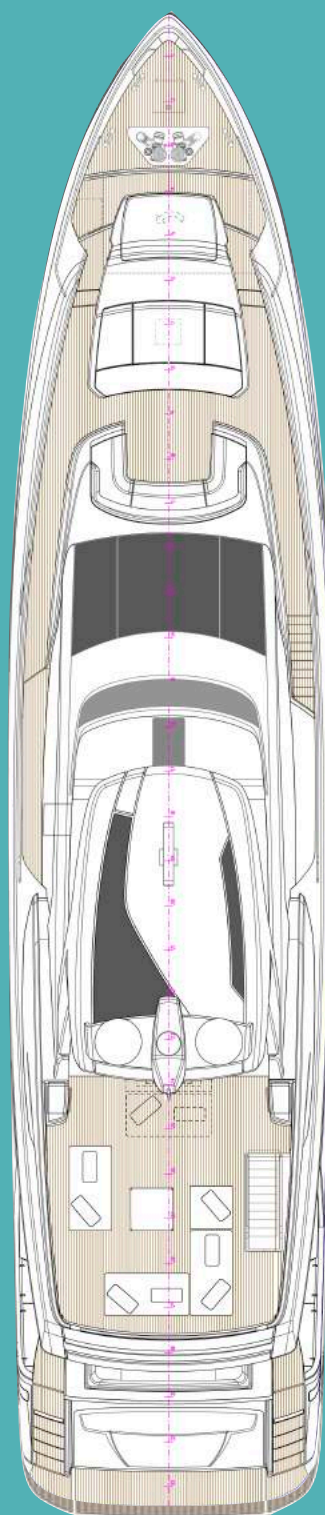
Tutorial video



Component manual

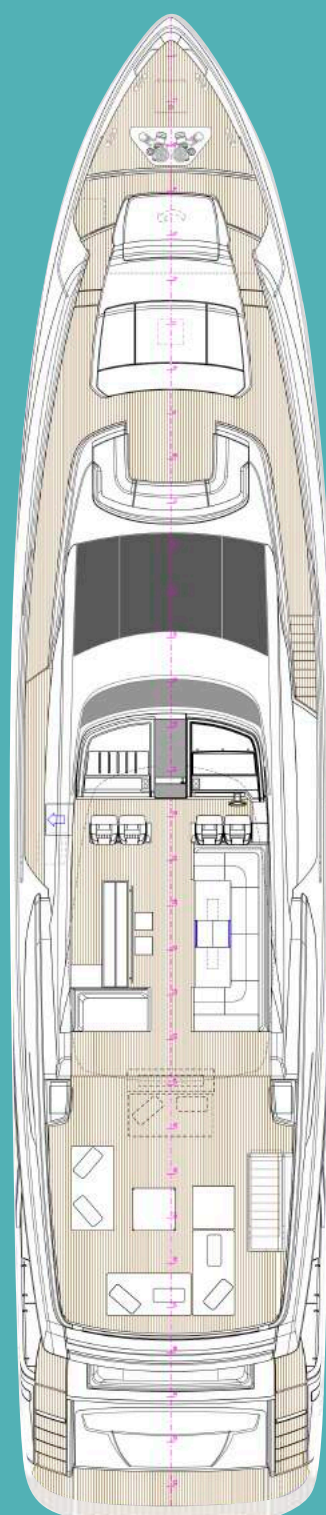


Favoriets



FLYBRIDGE

BOW AREA WITH **STANDARD** CONFIGURATION



RPH

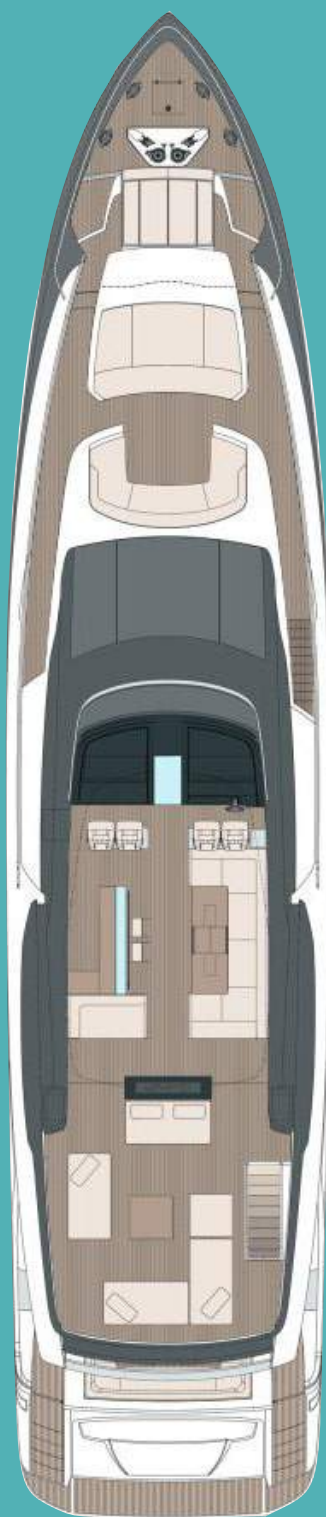
GA
ST



MAIN DECK

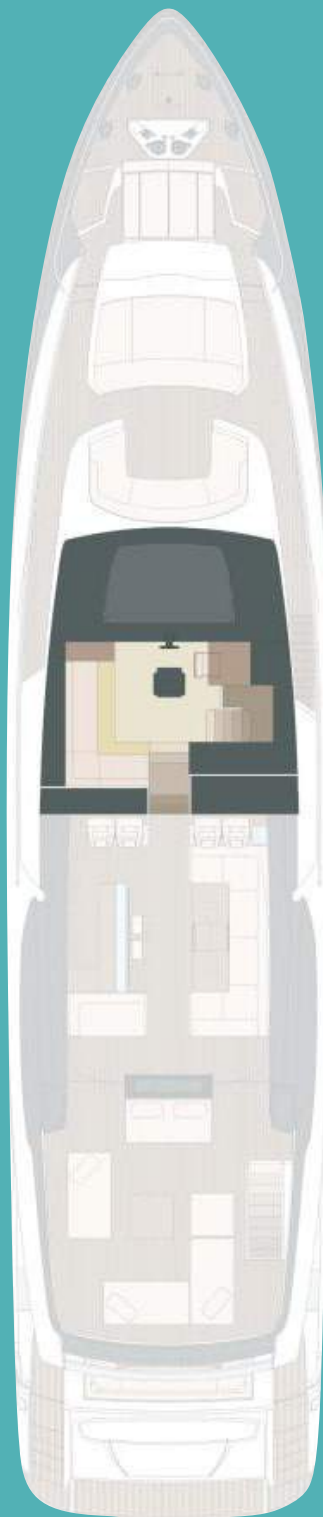


LOWER DECK



FLYBRIDGE

BOW AREA WITH **OPTIONAL** CONFIGURATION

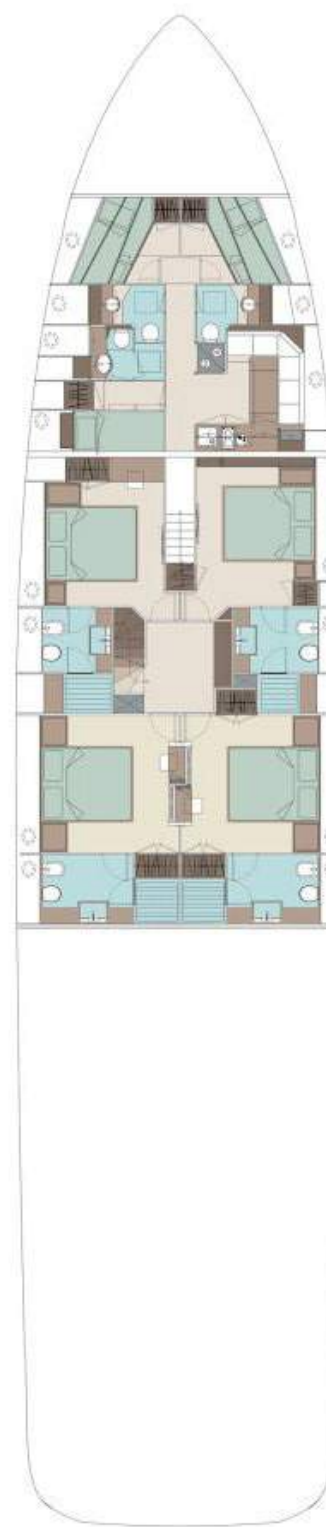


RPH

GA
OPT



MAIN DECK



LOWER DECK

PRELIMINARY

LOA	m/ft	33,53 110'0"
LH	m/ft	33,43 109'8"
LWL	m/ft	28,28 92'9"
BEAM	m/ft	7,27 23'10"
DRAFT	m/ft	1,99 6'6"
LADEN DISPLACEMENT	t/lb	147 324080
UNLADEN DISPLACEMENT	t/lb	124 273373
FUEL TANK	l/us gal	15300 4042
FRESH WATER TANK	l/us gal	3000 793

ENGINE POWER	std	2 x MTU 16V 2000 M96L 2638
MAX SPEED	knots	26
CRUSING SPEED	knots	23

TOTAL GUEST BERTHS	10
GUEST CABIN	5
GUEST HEAD	5 + 1 DAY
MASTER CABIN POSITION	MAIN DECK
FULL BEAM MASTER CABIN	YES
TOTAL CREW BERTHS	5
CREW CABIN	3
CREW HEADS	3
CAPTAIN CABIN	YES

ASKING PRICE UPON REQUEST

MAIN
FEATURES

HULL TYPE: 10°
 WARPED HULL WITH SPRAY RAILS AND AFT DEADRISE

H= OVERALL HEIGHT FROM KEEL 11,30 37'1"
 HT= MINIMUM TRANSPORT HEIGHT FROM KEEL 9,05 | 29'8"
 P= TRANSOM 0,10 | 0'4"

THE PERFORMANCE IS ESTIMATED AT THE
 FOLLOWING CONDITIONS: STANDARD VERSION
 DISPLACEMENT OF THE YACHT AT HALF LIQUID LOAD, 133 t
 CLEAN HULL, 25°C AIR TEMPERATURE GOOD 293713 lb
 WEATHER CONDITIONS, 8 PEOPLE ON BOARD.

OVERLOADING THE YACHT BY: 3 t/lb. 6614
 TOP SPEED DECREASES OF: 1 knot

STABILIZATION: PINE TRACK 370RM
 & INTERCEPTOR

SEA KEEPER 2 x SEA KEEPER 16

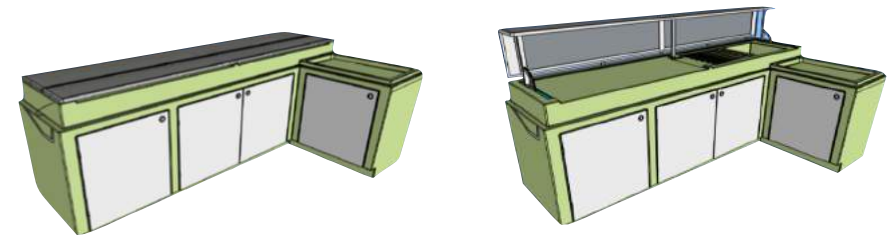


FLYBRIDGE

FLYBRIDGE

56 m²

- 1. Flybridge aft** space for free standing furnitures, provide maximum freedom of choice; lift TV with sofa as OPT; Starboard side steel & teak cabinet with ice box inside; Sporty and full integrated design for rails, built in carbon fibre, wood and stainless steel.
- 2. Flybridge living area** under sporty painted hardtop, with fixed furnitures (lower storage inside), corner bar with multiple storage.



- 3. Flybridge forward** revolutionary concept, access to the port side panoramic balcony, connected with bow area by walkways on wide body structure. **BEST IN CLASS FEATURES**



RPH

RPH

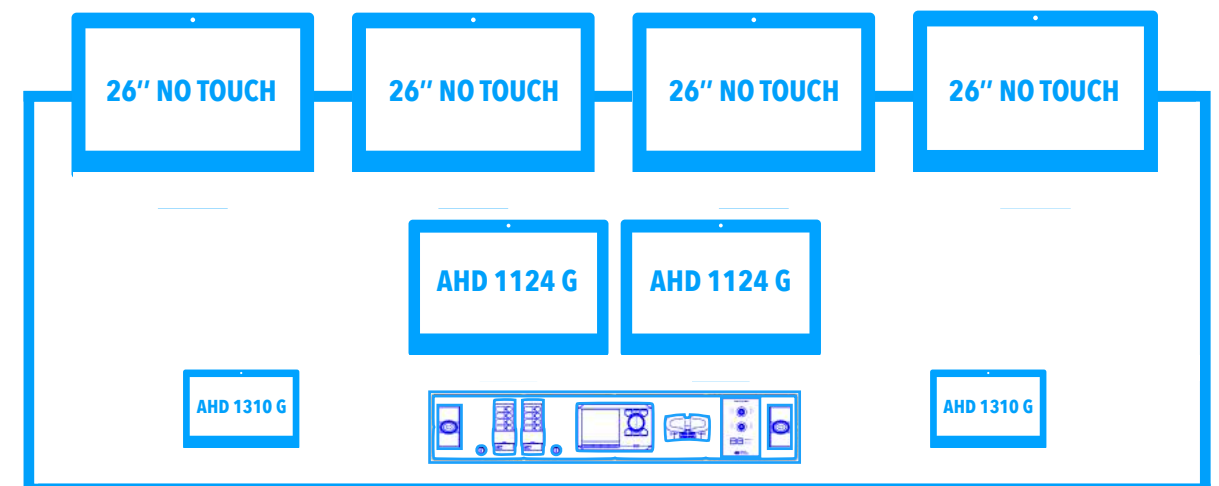
10 m²

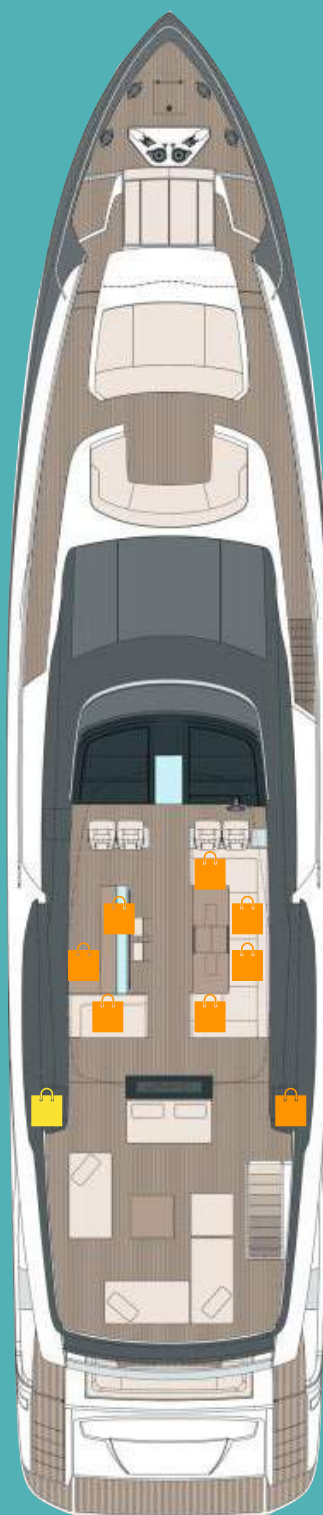
INTEGRATED DASHBOARD YES

1. RPH crew stairs connected with main deck service area.

2. Smart bridge system new mega yacht bridge system integrates all the Böning automation information. All the main controls are available in the helm panel and in the touch screen panel monitors controllers. The design of the bridge is ergonomic and it has been created to guarantee a very easy control to the captain and a safe navigation. **Smart bridge solution** for non imo super yachts FURUNO and BÖNING also offer a complete solution for yacht and super yacht (non IMO) the new Smart Bridge System, a very compact and customized console which integrates all the controls of the boat.

Htteland 26" x 4; AHD Boening 24"x 2; AHD Boening 10" x 2





EXTERIOR
STORAGE

FLYBRIDGE 4000 l / 1056 US gal



Up to 250 l
Up to 66 US gal



From 260 to 750 l
From 68 to 198 US gal

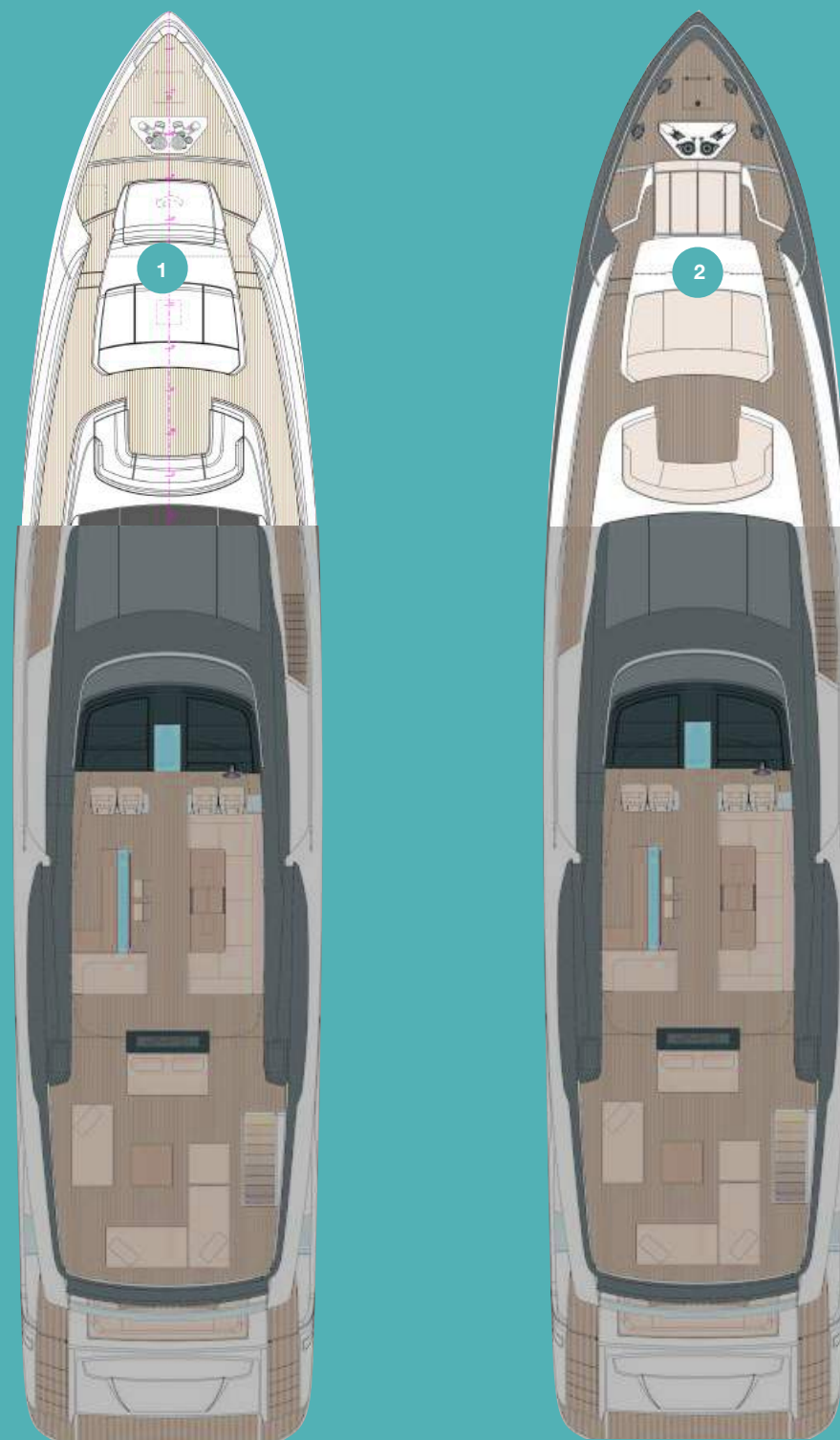






DESIGN
CONCEPT





STD CONFIGURATION OPT

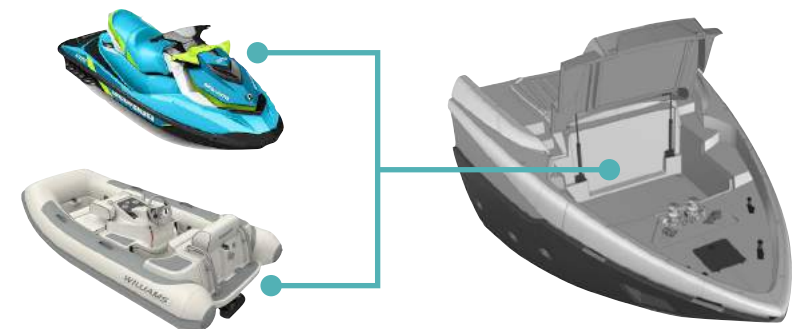
**BOW
AREA**

BOW AREA

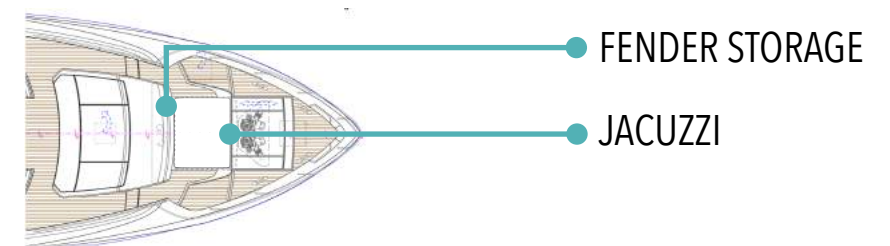
37 m²

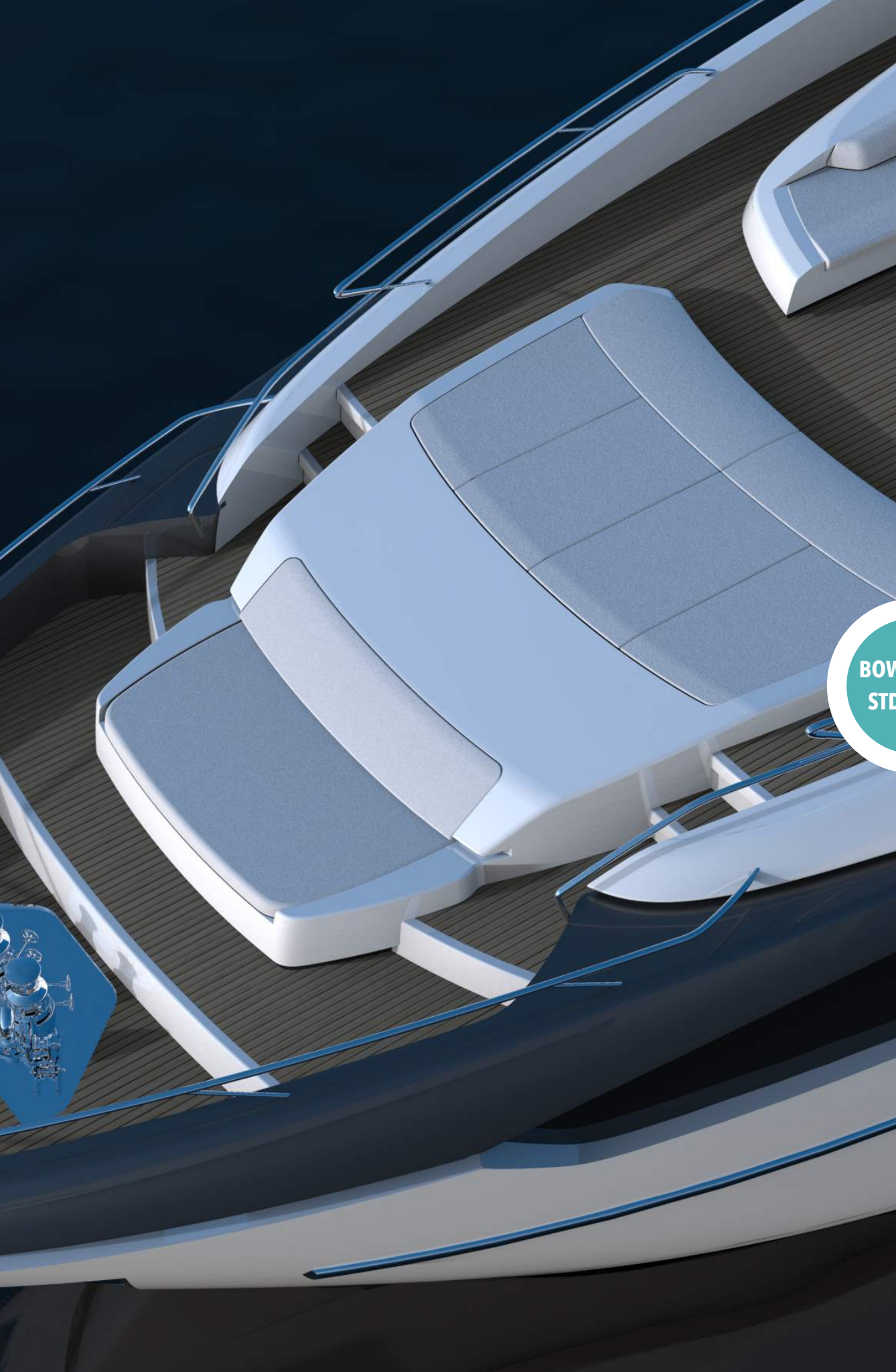
THE MOST COMPLETE BOW AREA ON MARKET

- 1. STD version**, separated sun pad and extra forward lounge sitting area with underneath **bow garage** total 14000 l for a 3 seater jet ski or a tender 285 Williams turbo jet (crane OPT); Walkways connected with flybridge.



- 2. OPT version** lounge sitting area, separated sun pad with underneath fender storage; **Jacuzzi** with sliding extra forward sun pad as cover.





BOWA AREA
STD & OPT





**BOW
STORAGE**

BOW

14000 l / 3698 US gal



Up to 250 l
Up to 66 US gal



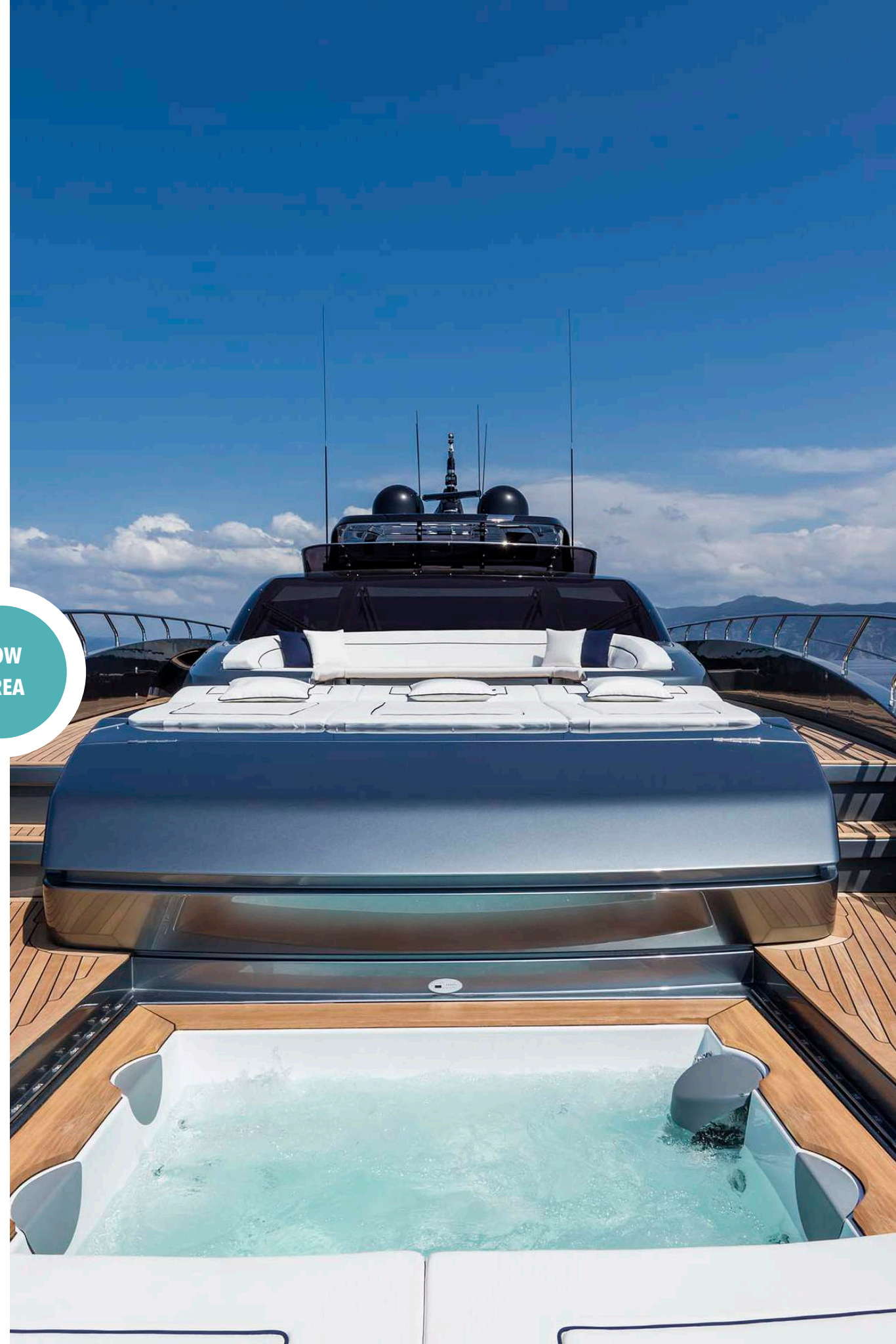
From 260 to 750 l
From 68 to 198 US gal



Over 750 l
Over 198 US gal



BOW
AREA



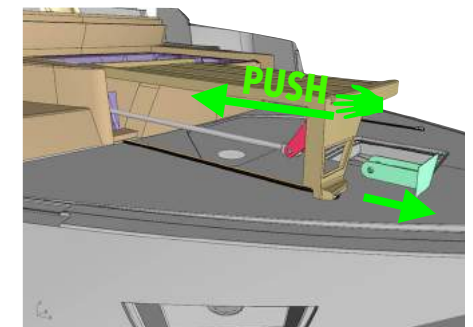
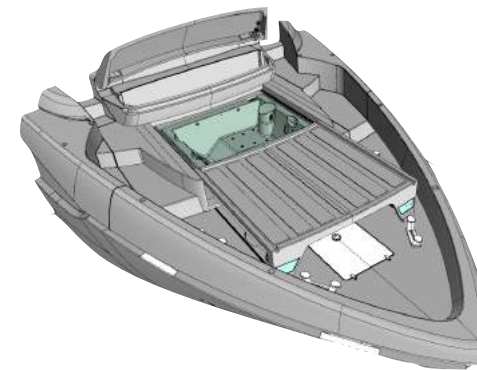


JACUZZI
& STORAGE

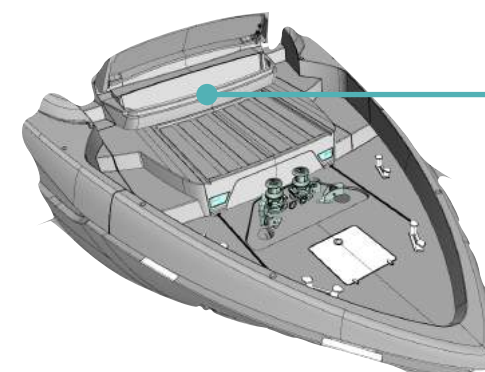
JACUZZI COVER FENDER STORAGE

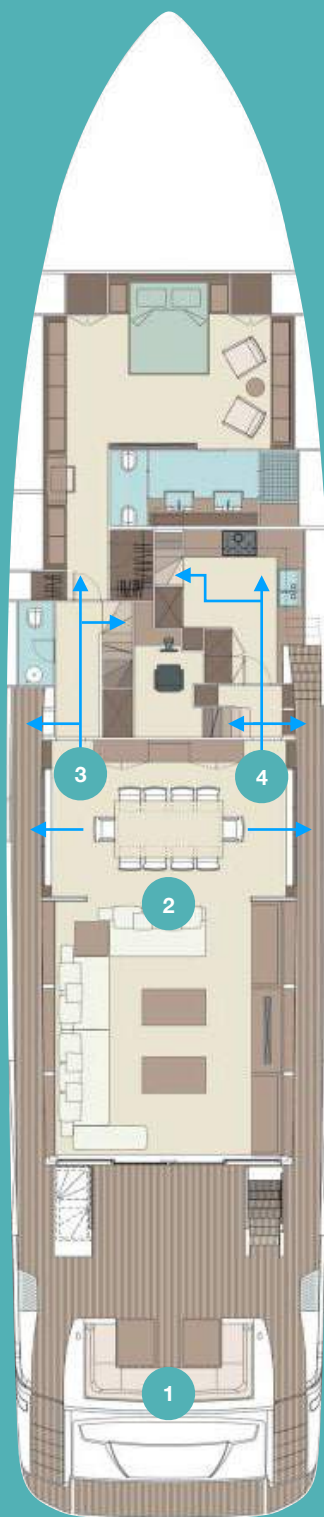
AUTOMATIC
YES

Jacuzzi with sliding automatic cover. The cover is used as an extra sun pad; In the emergency conditions, the cover can be closed manually.



Fender storage in the OPT Jacuzzi (mod.UNIQUE) version.





MAIN
DECK

MAIN SALON	47 m ²
GALLEY + PANTRY	8 m ²
COCKPIT + WALKWAYS	42 m ²

- 1. Cockpit** over 5m length, full painted, crystal & stainless steel details with C shaped sofa and teak table; Covered mooring system; Flying stair to flybridge built in stainless steel; Sidewalk wings with transparent glasses.
- 2. Main salon** 270° glass view new concept of living; Full height semiautomatic openable side doors (double side: port side as STD, starboard side as OPT); Double foldable balcony available as OPT; LED bar embedded ceiling; Maximum salon ceiling height over 2,28m.
- 3. Dedicated for guests** corridor and stairs, completely separated from crew areas.
- 4. Dedicated for crew** corridor and stairs connected with RPH, galley and lower deck crew area, completely guaranteed the guests privacy.



EXTERIOR
STORAGE

MAIN DECK 700l / 184 US gal
GARAGE 25000l / 6604 US gal



Up to 250 l
Up to 66 US gal



From 260 to 750 l
From 68 to 198 US gal



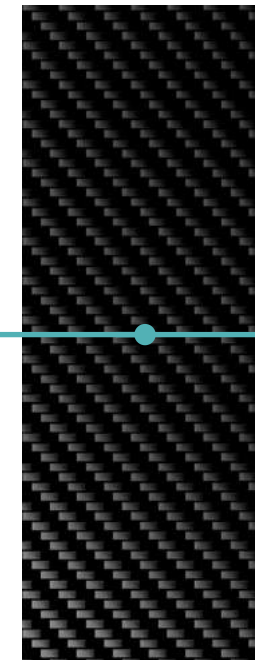
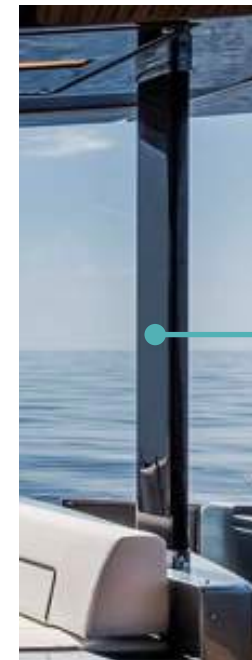
Over 750 l
Over 198 US gal



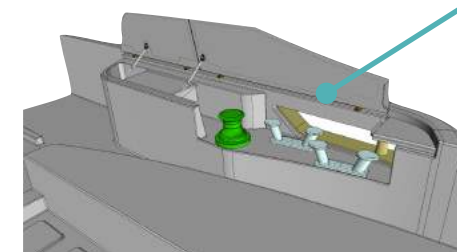
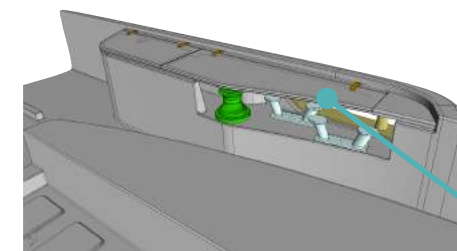


COCKPIT
DETAILS

PILLAR FULL CARBON
MOORING STATION COVERED



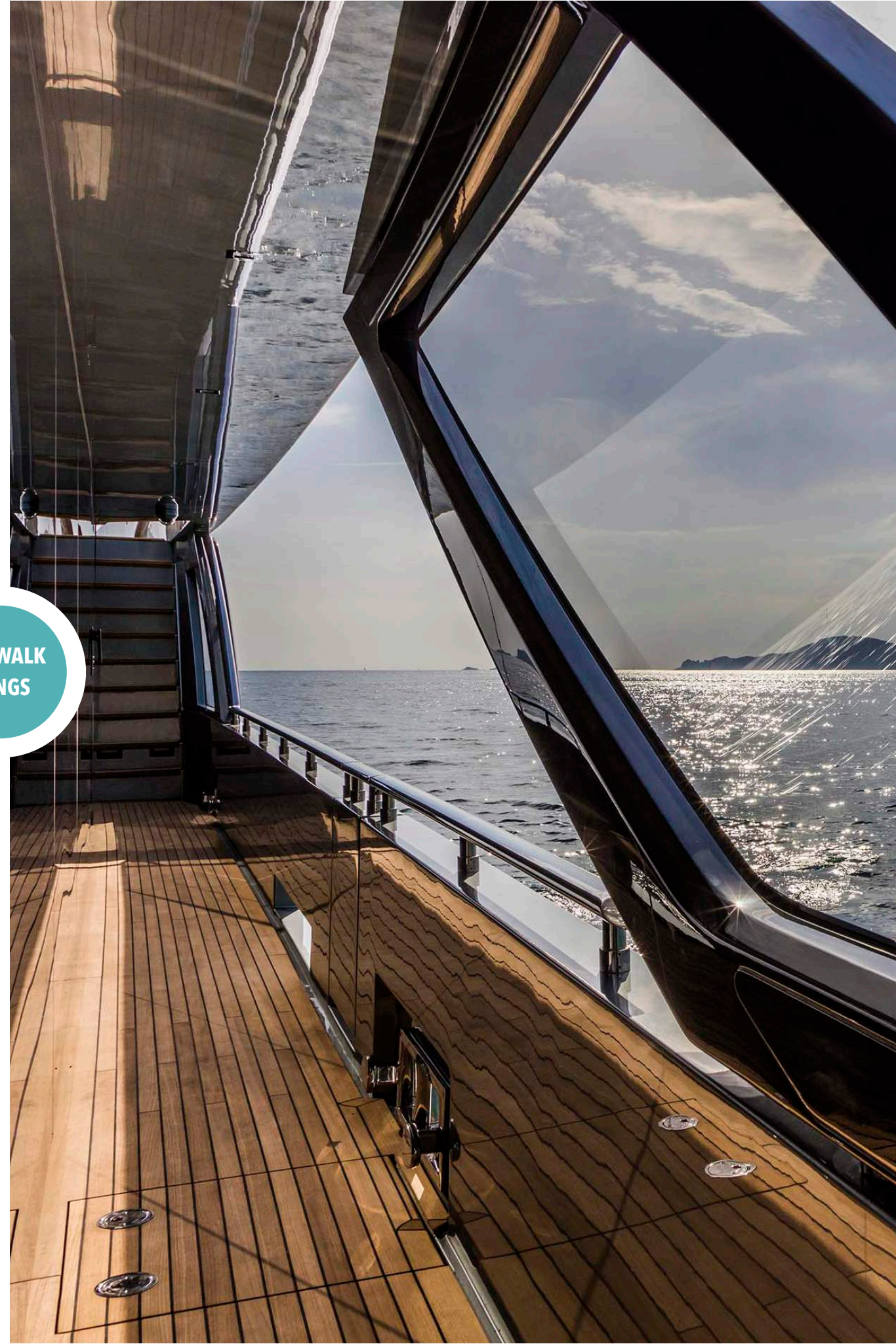
FULL CARBON



COVERED



SIDEWALK
WINGS

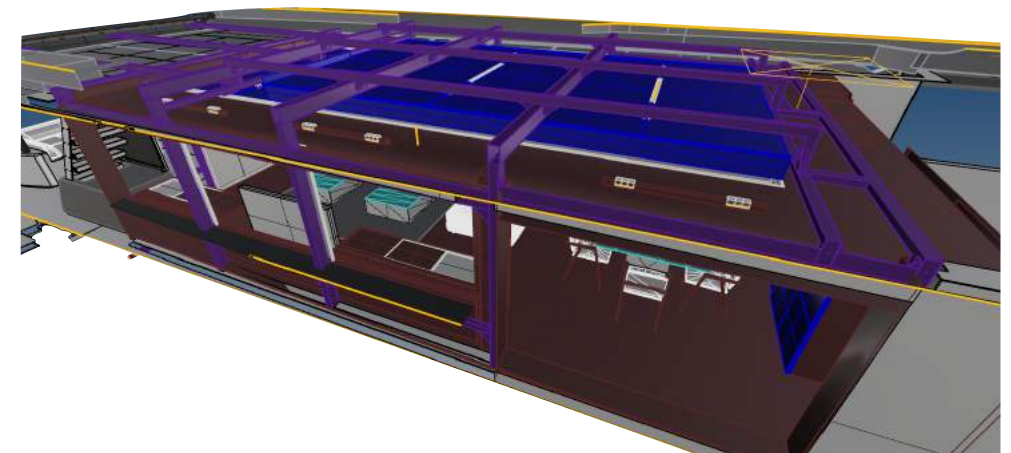




SPIDER
FRAME

BUILDING STRUCTURE SALON

SPIDER FRAME made by a very high-level steel, a frame like a spider web is created which guarantees both weight supports and safety standards. At the same time, it increases the viewing and lighting effects inside the salon, which is a 270° panoramic view.







2,28m



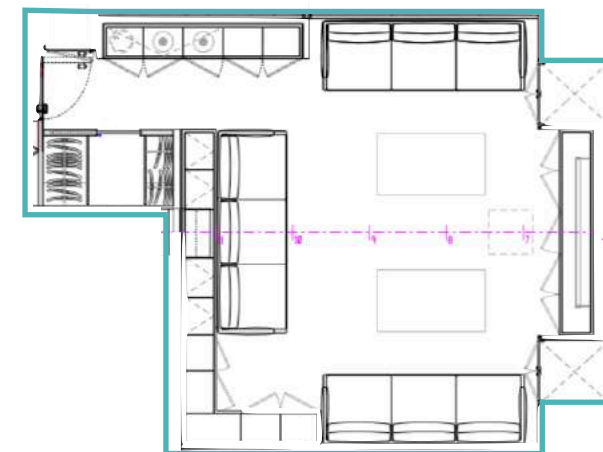
MASTER CABIN

MASTER CABIN MASTER HEAD

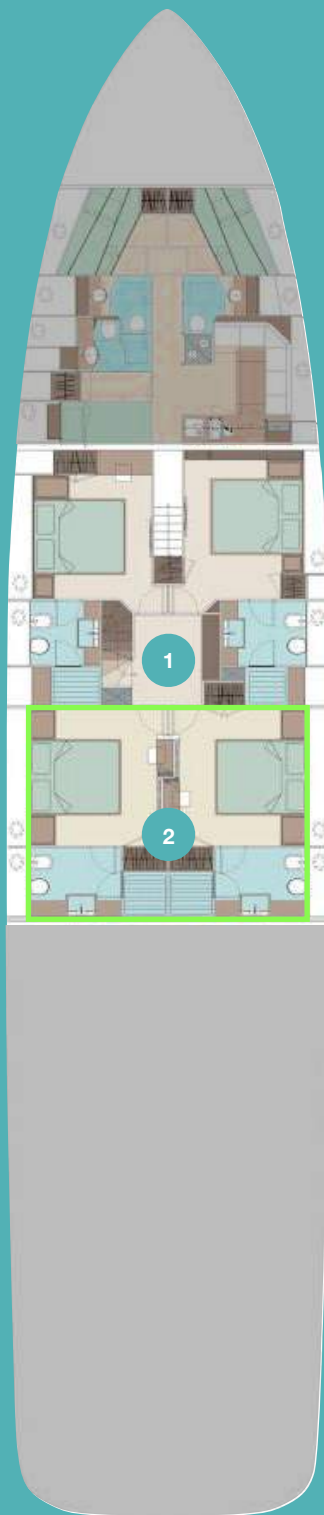
26 m²

6 m²

- 1. Full beam** wide body master cabin; Huge windows incredible height and full length dedicated to master cabin.
- 2. Sound insulation** master head next to the galley, perfectly blocked noise from the service area.
- 3. Storage space** walk-in wardrobe next to the master cabin access; Small wardrobe in the each corner; Cabinet storage on each side.
- 4. Design concept** TV embedded mirror; LED bar embedded ceiling.
- 5. APAC VERSION** this area will be converted to a private salon.







GUESTS AREA

GUESTS AREA

54 m²

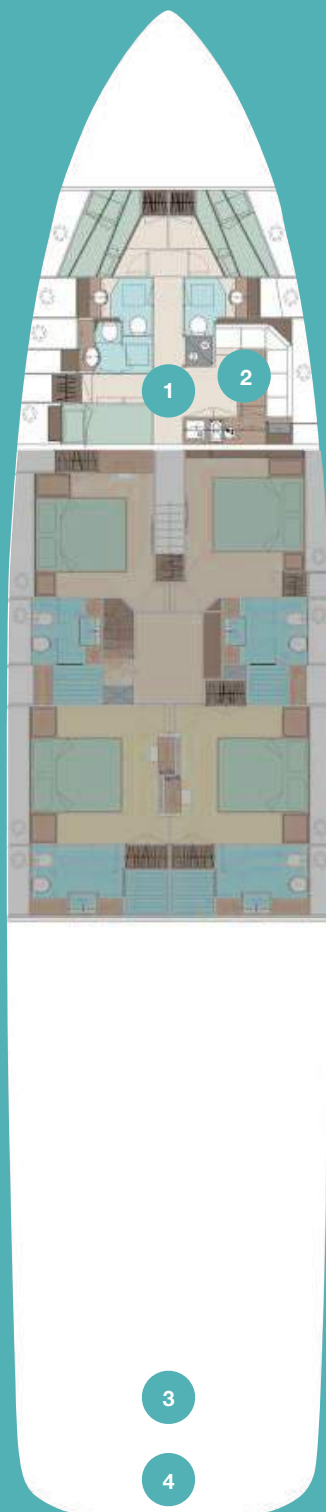
BEST LAYOUT IN CATEGORY

1. Version 1 four VIP cabins all with double bed and en suite heads. Hull windows full integrated in the yacht design.



2. Version 2 two cabins converted to a big VIP cabin with walk in wardrobe and en suite head.





CREW AREA

CREW AREA GARAGE

27 m²

19 m²

- 1. Crew area** 4 crew berths in 2 crew cabins, 2 heads; 1 captain cabin with en suite private head.
- 2. Crew mess** with La shaped sofa and crew galley; Crew quarter with plenty of storage and laundry column.
- 3. Garage** longitudinal garage can hold a Williams 565DJ and a Seadoo (consequential launch), or a Williams 505DJ and Seadoo (independent launch).



- 4. Pivoting transom system** patented by Ferretti Group with submersible platform; Stern port side stainless steel handrail with integrated shower.



INTEGRATED
SHOWER





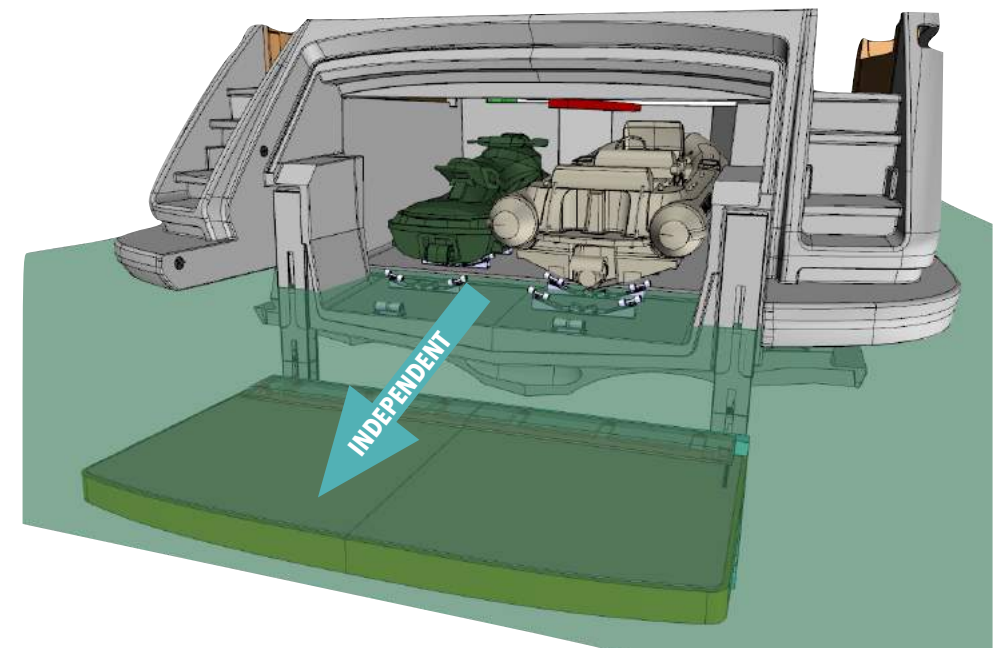
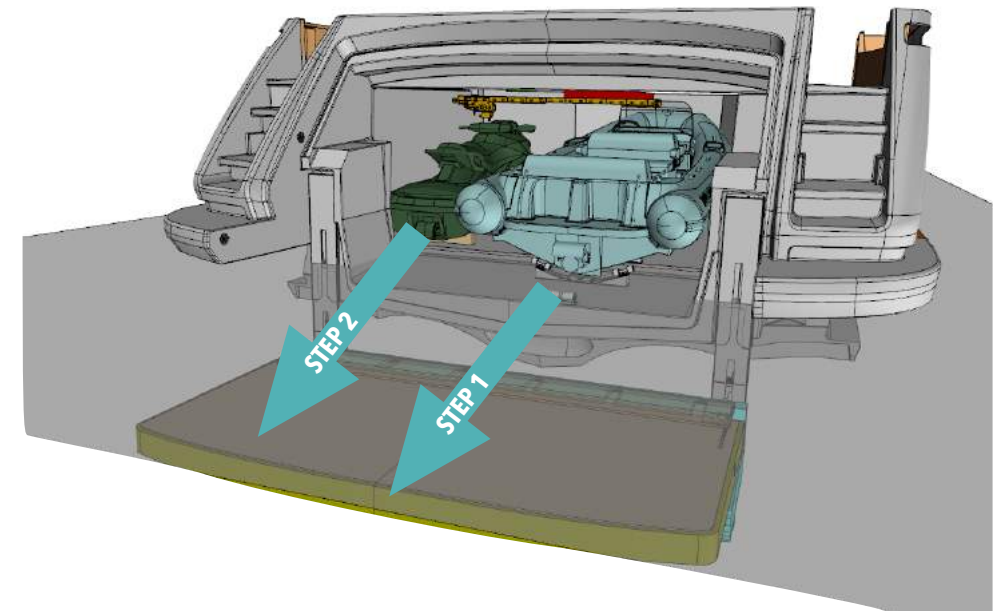
PIVOTING
TRANSOM





MODE 1
MODE 2

CONSEQUENTIAL
INDEPENDENT

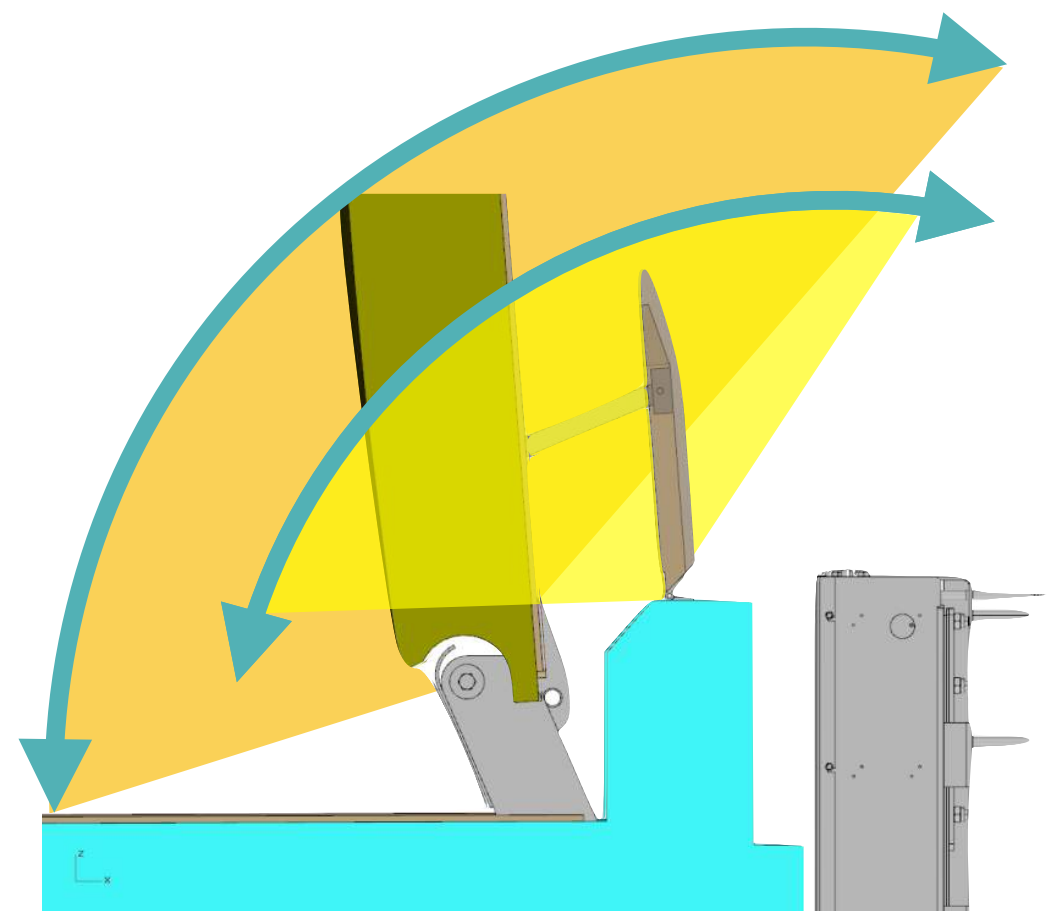




**GARAGE DOOR
THRESHOLD**

AUTOMATIC
AUTOMATIC

GARAGE
DOOR





EXTERIOR		
DECK	AREA	RIVA 110' DOLCEVITA
FLYBRIDGE	EXTERNAL	56
UPPER DECK	BOW LIVING AREA	37
MAIN DECK	COCKPIT + WALKWAYS	42

INTERIOR		
DECK	AREA	RIVA 110' DOLCEVITA
UPPER DECK	WHEEL HOUSE	10
MAIN DECK	MAIN SALON	47
MAIN DECK	GALLEY + PANTRY	8
MAIN DECK	MASTER CABIN+HEAD	32
LOWER DECK	CREW AREA	27
LOWER DECK	AFT GARAGE	19
LOWER DECK	BOW GARAGE	YES
LOWER DECK	GUEST CABINS + HEADS	54

TOTAL BY AREA / DECK		
DECK	AREA	RIVA 110' DOLCEVITA
LOWER DECK	INTERIOR	100
MAIN DECK	INTERIOR	87
MAIN DECK	EXTERIOR	42
UPPER DECK	INTERIOR	10
UPPER DECK	EXTERIOR	37
FLYBRIDGE	EXTERIOR	56

TOTAL SMQ		
DECK	AREA	RIVA 110' DOLCEVITA
TOTAL	INTERIOR	197
TOTAL	EXTERIOR	135

GROSS TONNAGE	
GT	219



Priva

A FERRETTI GROUP BRAND