



AUSTRALIA'S MOST AWARDED LUXURY BOAT BUILDER



THE NEW 515 SUV | CROSS OVER TO THE ULTIMATE BOAT

TWO BOATS ... IN ONE

The sporty and adventurous Riviera 515 SUV joins a growing collection of luxury pleasure boats opening up a whole new world of boating enjoyment for both the avid angler and the cruising entertainer.

Indeed, our owners tell us it's a lot like having two boats ... in one.

The SUV series is the perfect pairing of two legendary designs, each with its own formidable pedigree ... hence its name has automotive origins. Created after worldwide global input from owners the SUV, in many ways, is really your idea.

The result, of course, is a versatile vessel like no other – she combines the high-performance, blue-water cruising and fish-raising abilities of the classic Flybridge collection with the single-level, leisurely entertaining features of our very popular Sport Yacht design.

The SUV truly is ... the best of both worlds.





THE BEST OF BOTH WORLDS

Befitting a pleasure boat of this calibre, the 515 incorporates clever and convenient alfresco lifestyle concepts and ultramodern technology with luxurious appointments ... not to mention enhanced serviceability, savvy storage and an exacting eye for detail from fit to finish that reminds you that she is nothing less than an Australian-built Riviera.

And while she retains the distinct indoor/outdoor characteristics for which Riviera is internationally renowned, this is an entirely new style of luxury pleasure boat. You will sense this new approach from the moment you step onboard – double transom doors allow better access from both the port and starboard sides creating a walk-around island storage centre. In effect, this adds the large swim platform to what is already a full, no-nonsense Flybridge-scale cockpit.

The swim platform, with lift-out stainless steel rails, also has a number of options to suit individual owner requirements, for example: custom rod holders and a bait preparation station can be fitted for the angler, as well as a 400kg hydraulic lift to assist with tender storage.

The strong fibreglass lid of the transom storage centre lifts up to reveal double BBQ with grill, stainless steel splashback and LED lighting – features that will impress even the most discerning chef. Port-side is a large self-draining locker ideal for swimming and diving gear, which can be converted into a live bait tank with a filter and glass front, or even an additional BBQ for the grand entertainer.

In the floor of the 9.90 square metre cockpit are separate hatches – with stainless steel lock-downs – providing direct maintenance access to either of the pod drives, as well as a large, central, self-draining moulded lazarette locker to store cockpit furniture and water toys, and also a deep fish bin to port.

Forward there is a comfortable three-seater cockpit lounge to port – upholstered in high-quality weather-proof vinyl – and there is an





optional integrated and interchangeable table providing a versatile alfresco entertaining area.

Behind the cockpit lounge is a refrigerated cool box and self-draining recycling bin, as well as manual bilge pump access and lockable cabinet containing battery switches and AC/DC control board.

To starboard there's a sink, solid surface bench top and even more storage, and there's the option of including an ice-maker here. The cockpit's innovative joystick docking control is also starboard, although owners have the option of having it located on the port-side. This control is protected from the elements in an enclosed fibreglass compartment.

The GRP hardtop of the 515 extends out and over the cockpit and owners can extend this with a stainless steel and acrylic canvas awning for further protection from the sun and extremities. There's also the option of a rear-mounted camera, should owners desire.



ALL THE COMFORTS OF HOME

The rear bulkhead of the 515 SUV is tinted, tempered glass in a highly polished stainless steel frame, adding to the sense of light and space as you step into her spacious and luxurious saloon. To port is the modern and functional U-shaped galley from which a huge glass awning window opens out to the cockpit, in effect opening up the rear of the boat and, at the same time, affirming the galley as the central entertaining hub of the 515.

The galley has a contemporary two-pack finish to the overhead cupboards, complementing the satin-finish American oak timber cabinetry, which also comes with the options of high-gloss or satin cherry, satin teak or satin beach. Standard features include a two-burner electric cook-top with in-built pop-up fiddles to secure pots, a convection microwave oven and an optional drawer dishwasher within handy reach of the stainless steel sink. The solid surface bench top includes sink-cover that doubles as a cutting board, while the mixer tap conveniently swivels so you can wash down the self-draining bin compartment to port.

In the headlining above the galley is a rod locker, confirming the 515's incredible versatility, and to starboard are two Vitrifrigo drawer fridges and a freezer, as well as a drinks cabinet (of course, with easy access from the cockpit) which has built-in drawers for glass and bottle storage.





RELAX IN STYLE

The 515 SUV's spacious saloon features a large L-shaped lounge to port with a hi-lo dining table which folds and lowers to become a coffee table. Adjacent to the dining area is an optional three-seater settee in which the middle seat base can slide out as an ottoman and form additional seating around the main dining table – also handy for family games nights. An optional smaller table can be fitted that lifts out from the settee and sits between the two remaining seats, forming additional dining or work space. Forward of the three-seater settee is a 32-inch television and Fusion sound system, stored out of the way in its own dedicated compartment to starboard. It rises elegantly and electrically at the touch of a button, and swings for viewing from every saloon seating position.

Built into the solid GRP hardtop are two Webasto electric sunroofs – each with Oceanair block-out and flyscreens – which bring more light and fresh air into the saloon, enhancing that already achieved through the opening, tinted side windows and huge windscreen looking out over the forward deck and bow. This forward deck of the 515 can be accessed via wide walkways with high hand rails on either side of the vessel, and there's an option of including a large sun pad to add to her entertaining capabilities. Again, this is a decision best left to specific owner requirements.





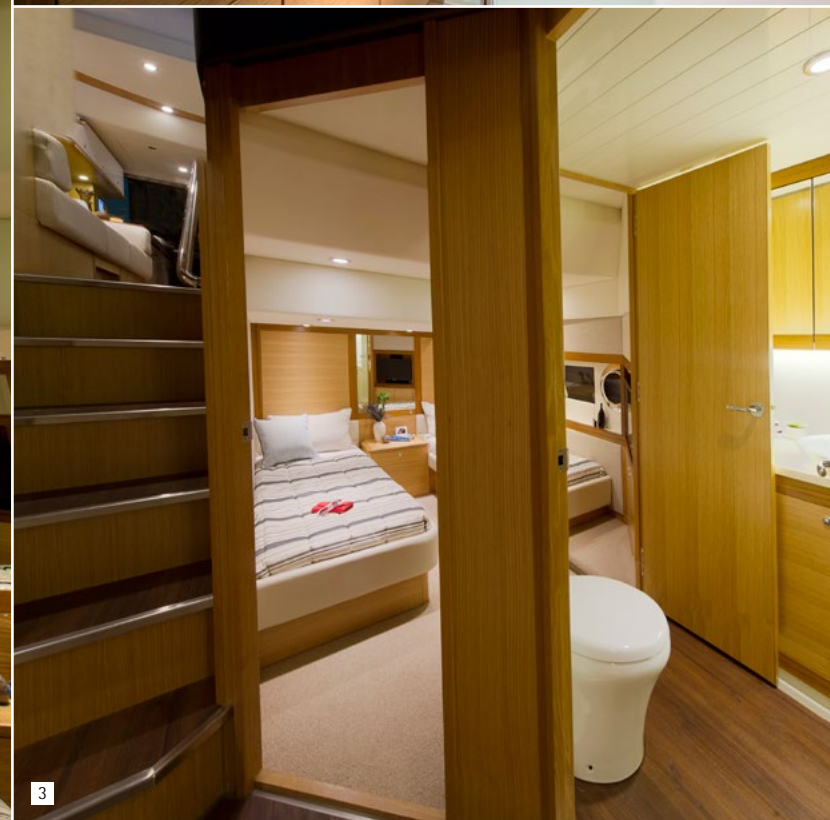
OPULENT ACCOMMODATION

Riviera's steadfast commitment to going "first-class" in everything it does extends to the flexible three-stateroom/two-bathroom accommodation deck of the 515 SUV – again there's absolutely no compromise in terms of quality or on-board liveability and luxury.

Natural light filters into the wide atrium, courtesy of the massive windscreen and sunroofs above and complemented by the accommodation deck's own clever design elements. You'll immediately garner a sense of spaciousness as you step down the non-slip, natural timber-finish companionway – the extent of headroom is clearly evident below deck.

The very generous master stateroom aft on the port-side features a contemporary palette of elegant fabric, soft-touch leatherette and satin oak with teak accents – another subtle reminder that you are aboard a world-class Riviera. Natural light is achieved through a large hull window and, although air-conditioned, there's an opening port hole to bring in extra fresh air. The master's massive walk-around queen-sized bed is supremely comfortable and savvy storage concepts include large under-bed drawers and a huge locker under the inner-spring mattress, in addition to the two bedside tables and cedar-lined hanging locker. From the comfort of the master bed, you can watch your favourite movie or television program courtesy of a 26-inch LCD TV and Samsung home theatre system.

1. The lower accommodation deck is awash with natural light from the open dash and windscreen atrium. 2. Aft master stateroom ensuite. 3. Optional layout to have two twin beds in the aft port side cabin. 4. Aft master stateroom.





The master ensuite forward also features full headroom, luxurious bathroom fixtures, ample storage cupboards, overhead and vanity lighting, solid surface bench top as well as a contemporary porcelain sink and mixer tap. The large frameless shower-stall has a teak-lined seat and showerhead on a slide bar, while the bathroom floor is a high-quality, non-slip, timber-finish platform enabling excess water to drain quickly and ensuring that owners remain dry and comfortable. Maximum privacy is assured here – an overhead deck hatch brings in additional light and fresh air but, when it's needed, an Oceanair block-out screen slides across.

Depending on specific owner requirements, the aft master stateroom can be configured as a guest stateroom featuring full-length twin beds, with the forward stateroom becoming the master.

FIRST-CLASS ALL THE WAY

In keeping with its commitment to going first-class, the air-conditioned VIP guest stateroom boasts all the luxuries of the master – indeed there's the option for it to actually be the master stateroom with its own private ensuite. This forward stateroom also has a comfortable queen-sized walk-around bed, cleverly placed overhead cabinets with positive locking hardware and gas support struts as well as large his/hers cedar-lined hanging lockers. Expansive hull windows and dual deck hatches maximise natural light and ventilation, and there's an option of additional opening port holes. Entertainment to this guest stateroom is via an optional 22-inch LCD TV and Samsung home theatre system.

Of course, the premium finish philosophy also applies to the ensuite, which mirrors the luxurious master bathroom, complete with overhead deck hatch and Oceanair block-out screen. In the standard layout, the guest ensuite starboard doubles as a day head.

There's an opening port hole and large hull window in the starboard aft twin cabin as well, enhancing the abundance of light and ventilation throughout the accommodation deck. Consistent with the "nothing less than the best" philosophy at Riviera, there is full headroom and adult-sized twin beds, as well as cedar-lined hanging locker, drawers and under-bed storage. At the entrance to the cabin there's a large and convenient storage compartment which is ideal for the optional laundry centre and 22-inch LCD TV and, again, Samsung home theatre entertainment system.



1. The VIP guest stateroom forward and the day head bathroom. 2. Starboard aft cabin features twin full adult-size beds and is a very light and bright cabin. 3. Aft port side cabin can be arranged in the optional twin bed layout. 4. The very elegant forward VIP guest cabin.



STEP INTO THE FUTURE

The stylish and sophisticated command centre of Riviera's 515 SUV is truly testament to its superior design elements – complementing a huge array of ultramodern marine technology are two large and luxurious low-back leather Navigator helm seats, with sports flip-up cushions for bracing in rough seas. While two helm seats is a rare feature for a boat of this size, there's absolutely "no compromise" in terms of spaciousness at the elevated wrap-around console, which itself has a distinct automotive feel. All critical navigation electronics, comprehensive engine instrumentation and vessel controls are within easy and ergonomic reach of the skipper's seat, including the helm's sporty steering wheel, the 3.4-inch C-Zone digital switching panel, the remote control for the hardtop-mounted spotlight and the helm joystick control. Of course there's excellent visibility through the expansive windscreen that has air-conditioning outlets at its base to prevent fogging. The windscreen itself is made of curved, toughened glass in a fibreglass frame and also features two heavy-duty Hepworth windscreen wipers, as well as freshwater washers.

THE JOYS OF JOYSTICKS

Having now launched hundreds of pod-driven luxury pleasure boats, Riviera is at the forefront of a marine revolution offering impressive fuel economy, high performance, quiet operation, more internal space and, of course, joystick control. The innovative joystick offers slow-speed manoeuvrability when backing up on a prize catch, in addition to precise docking. Indeed a skipper – either solo or with a novice crew – can simply push and twist the joystick to make the boat respond immediately, pivoting in place or crabbing sideways into a berth that's just long enough to fit the vessel. There's also an additional joystick to starboard in the cockpit, the option of having it located on the port-side if owners desire.





C-ZONE CONVENIENCE

The Riviera 515 SUV is equipped with a cutting-edge digital switching system, which enables control of any DC or AC circuit from either of two easy-to-use C-Zone control panels at the helm and the electrical control centre in the saloon, or conveniently from anywhere on the boat through an optional iPad courtesy of the 515's intelligent wireless on-board technology. You no longer need to decide which circuit-breakers to turn on – simply select the mode which best suits the operation of the vessel and the appropriate circuits will be energised or disengaged. The 515 SUV comes with factory settings "cruise", "entertain" or "dock unattended", as well as a "service" mode that shuts down all power and systems. Other user-friendly features include interior light-dimming, timer controls, automated circuit control, wiper speed control and wash function, as well as full systems monitoring.

PERFECT PACKAGE

Standard power in the 515 SUV is the new-generation and fuel-efficient twin Volvo IPS2 800s (460kW / 2 x 626hp) pod drives featuring forward-facing, counter-rotating propellers. Quiet operation is achieved through under-water exhausts, an effective silencer, state-of-the-art turbocharger and an air filter with improved insulation. At the same time, the robust engine design contributes to minimizing on-board vibrations. And in addition to superior handling manoeuvring in tight quarters, IPS2 also offers excellent power-to-weight ratio, impressive fuel efficiency, long cruising range and high top-end speed. Sea trials with the twin IPS2 800s had the 515 SUV cruising at 26-28 knots with a top speed of 31 knots under full load (full fuel and water), and achieving a cruising range of 355NM at 23.9 knots.

1. The cockpit joystick. 2, 3 and 7. Riviera's attention to detail can be seen everywhere. 4. The C-Zone master control panel located just inside the saloon. 5. Day head bathroom. 6. The optional laundry in the starboard aft cabin.

IMPECCABLE PEDIGREE

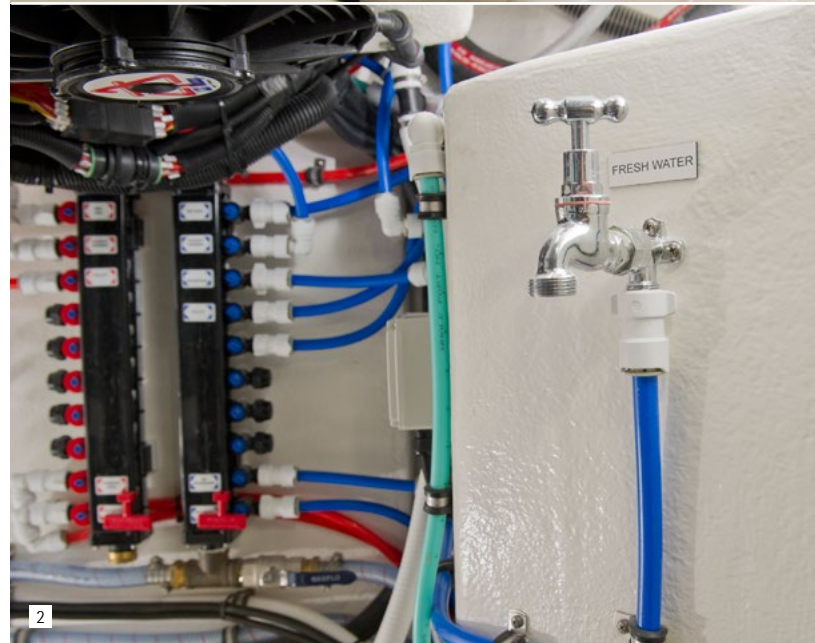
The 515 SUV's confident poise is just as evident offshore as it is at anchor – her solid and robust hull with keel is the evolution of Riviera's rich 34-year heritage in building world-class luxury powerboats that are proven in the tough Australian blue-water conditions. Our leading-edge technology and legendary build quality combines super-strong hand layups with solid GRP hull from the waterline down, structural core material in the hull flanks, main deck and hardtop, as well as precisely fitted, lightweight resin transfer-moulded small parts that are pre-fitted for a perfect seal when all major components are bonded together.

However, even before a single piece of timber was cut for the plug work, the 515 was created in-house using industry-leading Unigraphics 3D computer software, allowing Riviera's team of talented and passionate international designers and engineers to put to purpose every inch of available space, with a firm focus on convenient access to every key maintenance point – any issues can be quickly identified and addressed, and service costs are kept to a minimum.

DRY WHERE IT COUNTS

The "no compromise" approach is certainly evident in the flow-coated engine room, where the volume of space cannot be understated – access is gained through a hatch with gas strut located at the mezzanine step at the entrance to the saloon, thoughtfully opening forward to enhance passenger safety and, at the same time, maintaining walk-through access to the saloon from the cockpit when the hatch is open.

You'll notice that, where possible, every wire, loom and plumbing line is coded, coloured, numbered and saddled neatly to ensure easy access for servicing. All fittings to the hull skin are double hose-clamped on or below the water line and the GRP 3000L fuel tank has both sight and electronic gauges. Additionally,





each engine has Raycor fuel filters, with an option for dual filters. Emergency fuel shut-off valves can be accessed from outside the engine room for added safety.

Acoustic and thermal insulation linings are key features, as is the impressive commercial air intake system helping to keep the engine room temperature at 10 degrees less than the maximum recommended by the engine manufacturer, and also reducing fuel consumption even further. The air-conditioning units are mounted high so gravity feeds condensation water out the side, while a mist elimination system with veins draw additional moisture from the air. Four automatic bilge pumps with manual override are located at various points throughout the hull and pump out the sides, as opposed to the common drain lines located on either side of the boat and drain aft.

ELECTRICAL EXCELLENCE

The 515's maintenance-free batteries ensure carefree boating and are housed in special battery boxes in accordance with American Boating and Yacht Council standards. The boat also includes individual start battery banks for increased reliability with emergency parallel function. All battery banks are individually isolated at the main battery panel located in the cockpit, providing peace of mind in the unlikely event that one engine shuts down.

Watching television while at anchor or in the marina is now whisper-quiet through Mastervolt on-board DC-AC inverter for all installed televisions.

LED lights also provide trouble-free boating while reducing electrical current draw. The lamps use less than 10 per cent of the power required to run a bulb lamp – no bulbs mean no maintenance and long service life.

1 and 3. The engine room as full headroom forward with all of the key electrical controls and circuits located at eye level. 2. The freshwater system has a master manifold that allows any cold (blue) or hot (red) water line plumbed throughout the boat to be isolated for service or repairs.

CRAFTED WITH PASSION

Riviera is an Australian success story and a major international marketer of luxury pleasure boats. Our growth over more than 34 years has resulted in a company that today creates and manufactures three individual model collections and supports an international dealer network that spans more than 60 countries. We are also Australia's most awarded pleasure boat manufacturer.

The secret of our success is an absolute commitment to quality. Be it our 400 strong team of people, our work practices, materials, tools and technology, environmental responsibility or after sales service, we are rigorous in pursuing the highest standards.

Our craftspeople consult world-leading naval architects, engineers and designers. Our employment and training practices have also earned us many local and national awards.

Riviera operate the largest luxury boat building facility in the Southern Hemisphere and boasts some of the most sophisticated technology available.

34 YEARS OF RIVIERA

SINCE 1980

Our PASSION
To create the *ultimate* boating experience.

I ♥ RIV

AWARDED FOR EXCELLENCE

Riviera's vast collection of industry awards is a reflection of the pride and passion our master craftsmen put into every model in our premium range of Australian-built luxury pleasure craft.





The home of Riviera. The 14 hectare state-of-the-art manufacturing facility on the Gold Coast in Queensland. This is the largest facility of its kind in the Southern hemisphere.

RIVIERA'S ETHOS INSPIRES CONFIDENCE

The quality of our service is commensurate with the quality of our boats and is something we are passionate about. The experience of purchasing your Riviera, from the selection of the electronics and décor, to the regular service and maintenance will all be carried out reliably, promptly and smoothly. In fact, you can count on us, and our global dealer network, for the life of your boat.

It is this consistent quality that has created Riviera's enormous and ever-growing international appeal.

Today there are over 5000 Riviera luxury boats located in all corners of the globe.

A sensational and growing choice of models, an impeccable pedigree, excellent value and outstanding service: now more than ever, Riviera's reputation for quality with integrity inspires confidence in boating enthusiasts the world over.





The growing Riviera global network of dealers now spans 60 countries. Find a dealer near you at RivieraAustralia.com





ELECTRONICS

Electronics play an ever-increasing role in the pleasure, performance and safety of luxury boats, and the choice of equipment that is available today is vast. In fact, selecting the equipment that meets your needs can be a very challenging task. R Electronics is here to help: we source the best systems and products from around the world, we are experts at matching technology to individual requirements and work closely with Riviera's design team and Riviera's global Dealer Network to create systems that maximise your pleasure and safety.

RElectronics.com.au



STYLE

A passion for quality and good design steers everything we do at Riviera — and that is reflected in our exclusive range of clothing, accessories and decor items. If you love your Riviera, you'll feel at home with the Riviera Collection: casual yet stylish, comfortable, practical and made to withstand the rigours of boating life.

The Accessory and Decor Collection ranges from a storm jacket to stylish crockery. Riviera has the total leisure and style solution.

RStyle.com.au



INTERIORS

To make your boat truly your own, we offer a wide choice of fabrics, finishes and color schemes that allow you to customise your Riviera. Of course, we also have experienced designers who can advise and assist with your individual selection.

It is a real pleasure to own and use things that are aesthetically pleasing, work well and last — and because it is only appropriate that such qualities are found on board a Riviera, we supervise each individual interior scheme from creation to installation.

RInteriors.com.au





THE RIVIERA EXPERIENCE

When you buy a Riviera, you are really joining a family.

Indeed, this "Riviera Experience" is something we take very seriously and value very highly – we believe our core duty is to help owners of our world-class, Australian-built luxury pleasure craft to achieve the ultimate boating experience.

So you can imagine how proud we are that this commitment is something highly valued by members of our Riviera "family" of owners too.

With exclusive invitations to special adventures, social events and educational workshops, the "Riviera Experience" runs much deeper than owning a striking, sophisticated and stylish boat which not only looks a cut above the rest but also delivers in terms of superior sea-handling and innovative on-board technology.

Perhaps our passion is best reflected in the words of our Riviera owners:

"I had not even turned the key on my new 445 and I already felt part of the Riviera family. I've owned a number of boats and maybe I'm a slow learner ... I should have bought a Riviera earlier!"

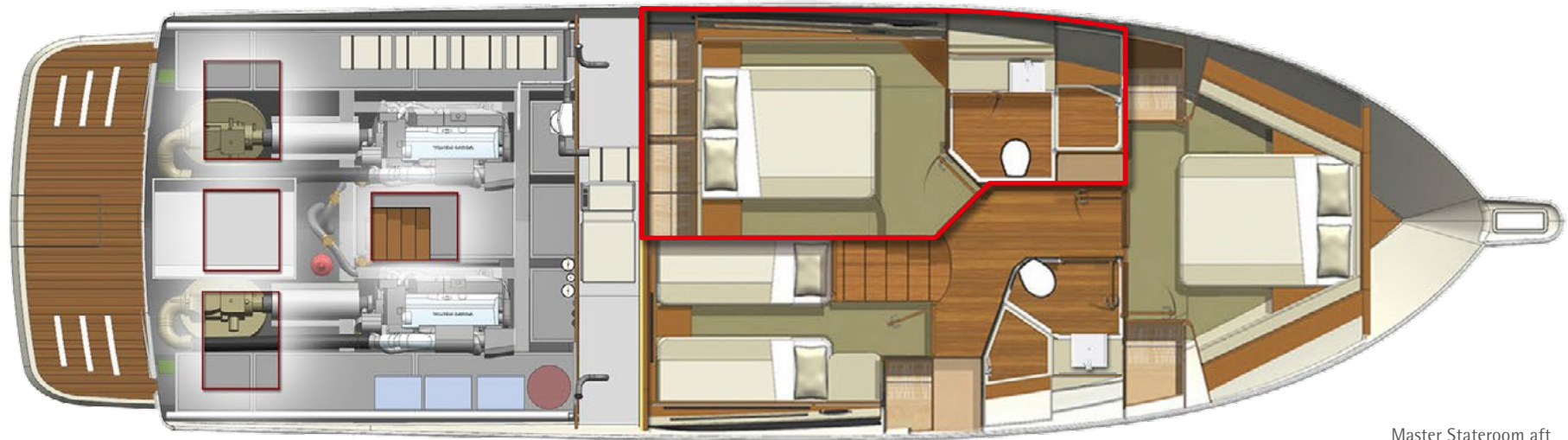
"We really enjoy coming together as the Riviera community. We've been on a couple of the Experience trips and there's a real safety aspect of going offshore and being around other Riviera owners, who know their boats and your boat too."

And one more ...

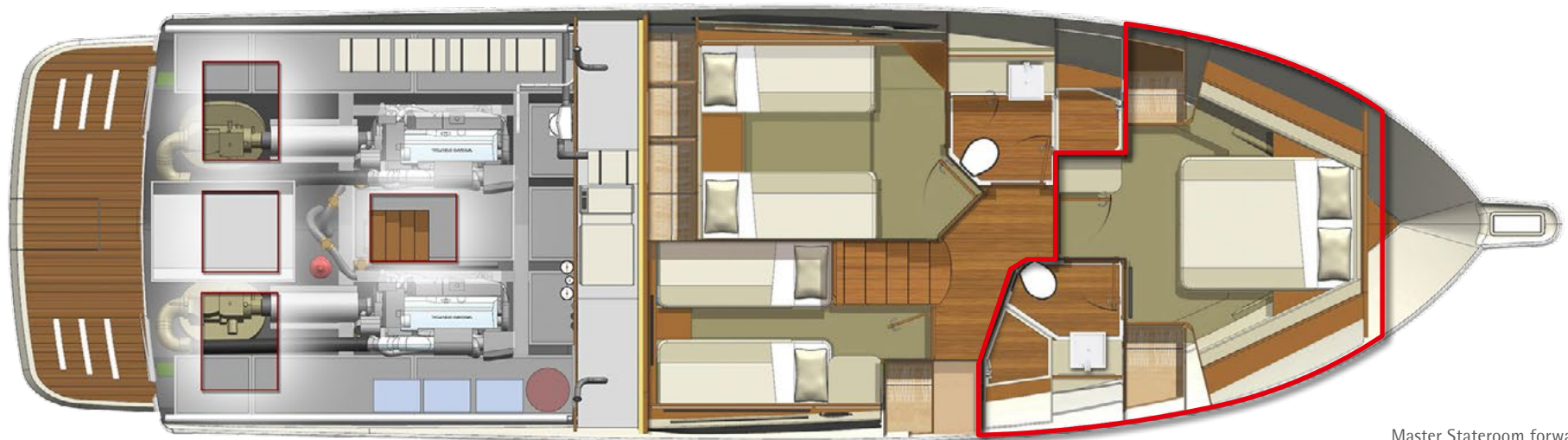
"Riviera goes over and above all expectations to make sure owners enjoy a great experience for the entire life of their boats. That lifelong commitment is something that really makes a difference."

Yes, they are glowing endorsements and they are all from long-time Riviera owners who share something truly unique – they share the truly unrivalled "Riviera Experience".





Master Stateroom aft



Master Stateroom forward



515 SUV

SPECIFICATIONS

Length Overall (inc. swim platform and bow sprit)	17.26 m	56' 8"
Lh to ISO8666 *	16.15 m	53' 0"
Beam (inc. gunwale)	5.01 m	16' 5"
Maximum Draft (inc. props)	1.18 m	3' 10"
Dry Weight ** (approx.)	22,690 kg	50,022 lb
Fuel Capacity ***	3,000 L	793 US gal
Water Capacity	750 L	198 US gal
Holding Tank Capacity	400 L	106 US gal
Sleeping Capacity	6 - 8 persons	
Cockpit Area	8.5 m ²	91.5 ft ²
Mezzanine Deck	1.40 m ²	15.1 m ²
Total	9.90 m ²	106.6 m ²
Standard Engine – Volvo Penta IPS800 x 2	460 kW	626 hp each
Engine options – Cummins Zeus® POD Drive x 2	442 kW	600 hp each
Volvo Penta IPS950 x 2	533 kW	725 hp each

Riviera Clarification of Specification

*Length of the hull (Lh) to ISO8666: Includes all structural and integral parts (ie. the moulded length of the hull). It excludes parts that can be removed in a non-destructive manner without affecting the structural integrity of the craft, eg. pulpits, outdrives, driving platforms, rubbing strakes.

**Dry weight represents the estimated minimum weight of a boat with standard engines and options, no fuel or water on board, no equipment or provisions and no personnel. The stated dry weight may be exceeded.

***Denotes net tank capacity. For useable capacity do not rely on more than 90% of tank capacity. Actual capacity will vary according to boat trim and sea state.

Speeds are subject to normal weather conditions, fuel and/or water levels, passengers and equipment loads.

Refer to your Riviera Owner's Manual and your Dealer for height to hardtop and maximum height details.

The specifications in this document are not complete or definitive and are subject to change without notice and therefore may not be current. Riviera will not be liable (in contract, tort or otherwise) for any loss resulting from the inaccuracy of any information contained in this document.

Specifications may vary on a regional basis. Some images in this brochure may include non-standard or after-market options.

Warnings

Riviera is committed to building the best luxury cruisers, tailored to suit specific countries and their individual compliance laws and regulations. Riviera equipment and build specifications approved for one country may not be compliant with another country's safety and equipment regulations and as such those cruisers may have no recourse to Riviera extensive manufacturer's warranties.

Each country and State has different safety equipment standards.

It is important that you ensure the requirements in your jurisdiction are met prior to the vessel being used.

Our PASSION

To create the *ultimate*
boating experience.

