



AUSTRALIA'S MOST AWARDED LUXURY BOAT BUILDER



THE RIVIERA 6000 SPORT YACHT | THE FLAGSHIP OF THE SPORT YACHT COLLECTION

EDITION 15.2



## A NEW WORLD OF BOATING LUXURY

Riviera's stylish and sophisticated 6000 Sport Yacht is the ultimate on-water entertainer.

This sleek design is widely acclaimed as a high-performance yacht akin to a six-star luxury resort and her design flexibility is further evidence of Riviera's commitment to catering to an extremely wide range of boating pursuits.

Supremely comfortable, the 6000 Sport Yacht features an innovative alfresco lifestyle design, ultramodern technology and palatial appointments. Her level of attention to detail from bow to stern confirms that she is indeed a world-class Riviera.

Of course the awe-inspiring aesthetic appeal of the 6000 Sport Yacht, with her sleek lines and contemporary hull windows and portholes, is just the beginning.

Our talented team of designers, engineers and master craftsmen have really captured an enriched sense of light, space and liveability from bow to stern.

Large fixed skylights and two electric sliding sunroofs are built into the curvaceous fibreglass hardtop, enhancing natural light and ventilation throughout the entirety of the 6000 Sport Yacht – from the expansive cockpit to the luxuriously furnished saloon and through to the generous-sized staterooms on the accommodation deck.

Befitting a motor yacht of this calibre, all on-board appliances, entertainment and operational systems, fittings and furnishings are premium quality and are a perfect fit with the state-of-the-art technology which helps us set new benchmarks in terms of convenience, reliability and ease of operation.

This, of course, helps us remain true to the Riviera ethos of sourcing the best and most reliable equipment and fittings from the world's most-respected suppliers to help our valued owners achieve 'the ultimate boating experience'.









## KEY FEATURES

- Sleek external styling, strong robust hull with keel
- Contemporary recessed hull windows and porthole designs
- Garage for 3.2m (10.5ft) tender and outboard
- 350kg (772lb) hydraulic boarding platform
- Wide walk-around side decks with raised bulwarks and well-placed rails for added safety
- Elegant foredeck with colossal-sized sun pad
- Generous entertainer's cockpit measuring 10.5m<sup>2</sup> (113ft<sup>2</sup>), with deep lounges both to port and starboard, as well as an aft wet bar, twin BBQ, drawer fridge and freezer
- Large awning window set in a strong stainless steel frame opens to the cockpit from the aft galley to enhance indoor/outdoor living
- Luxurious internal furnishings, including lounges made from the finest of padding, plush leathers and fabrics
- Extensive galley refrigeration with 3 fridge drawers, 2 freezer drawers and ice-maker, as well as high-end appliances
- Premium entertainment package – LED TVs in saloon and master stateroom, Bose stereo to saloon. Samsung home theatre system in master stateroom
- Opening saloon side windows aid cross-flow ventilation
- 2 x large electric Webasto sunroofs, one above the cockpit and the second in the saloon.
- Flexible four-stateroom, three-bathroom accommodation plan, with alternative layouts to suit various owner individual needs, including an expansive presidential design for the master stateroom
- Feature timber headboards in every stateroom, complemented







by LED mood lighting

- Option for aft or lower-deck galley, fourth cabin, office space or lower lounge/entertainment area
- Option for 8m2 (86.1ft2) utility room with exceptional storage and access from both cockpit and master stateroom, or crew quarters with access from the cockpit
- Three C-Zone central AC/DC control panels – saloon wet bar, helm and full-beam master stateroom – with pre-set and customised modes to simplify owner operation
- Sports-inspired ergonomic helm with sunken dash, excellent visibility and easy access to all controls, electric adjusting leather seats
- Volvo Penta IPS2-950 propulsion system (2 x 533kW/725hp engines and drive units) with joystick controls x 2, Dynamic Positioning System, anti-corrosion protection, auto-pilot and optional auto-trim system
- Maintenance-free battery banks x4
- Mastervolt battery chargers and inverter
- Fuel capacity 3300 litres (872 US gal), water capacity 800 litres (211 US gal)
- Top speed of around 31 knots under full load (fuel and water)
- Estimated cruising range of 401nm at 22.9 knots (with 10% reserve)
- Functional storage solutions throughout
- Thoughtfully designed-in access to key maintenance points throughout the yacht
- Water-tight collision bulkhead forward
- Riviera's renowned hallmark built-to-last philosophy
- 5-year structural warranty
- Exclusive membership of a global family of luxury motor yacht owners
- Riviera has, over the past 35 years, launched almost 5200 luxury yachts that today cruise the seas, oceans, lakes and rivers of the world.



## STEP ABOARD

Stepping up from the large hydraulic swim platform and through either of the wide transom side gates into the teak-laid cockpit of the 6000, you'll immediately appreciate the evolution of the luxury indoor/outdoor character for which our Sport Yacht series is internationally renowned.

A closer inspection of the generous 10.5m<sup>2</sup> (113ft<sup>2</sup>) cockpit confirms the clever lifestyle and storage concepts of the 6000. A practical twin barbecue with convenient drawer fridge and freezer sits conveniently aft above a large garage where a 3.2-metre (10.5ft) tender with permanently mounted outboard can be easily loaded with the built-in electric winch, with additional room for accessories and water toys.

The 6000's curvaceous fibreglass hardtop extends well aft to provide shelter and shade from the extremities, and houses the cockpit's own electric sliding sunroof which brings extra sunlight and fresh air into the alfresco area when desired. An L-shaped lounge/dining area to port comfortably seats six people, and a teak table lowers to create a large daybed. There's also a two-metre lounge to starboard to seat an additional three people, further reinforcing the entertainment and enjoyment of the 6000 Sport Yacht and confirming this yacht is indeed: 'the ultimate entertainer'.

1. The extremely generous 10.5m<sup>2</sup> (113ft<sup>2</sup>) cockpit features an L-shaped lounge to port, where the teak table lowers to create a daybed. There's another large lounge to starboard. 2. The large hydraulic lifting platform not only helps facilitate ease of boarding, it also becomes an extension of the outdoor cockpit living area serving as an additional sunning and relaxation space. When lowered into the water at a shallow level, the platform takes on a whole new dimension as a beach, allowing you to swim on or off the platform with young children or to launch your favourite water-toys such as kayaks, standup paddle boards. 3. and 4. There's an additional electric sliding sunroof servicing the 6000 Sport Yacht's expansive cockpit









Wide, walk-around non-slip side decks with well-placed hand rails give access to her colossal-sized sun pad which sprawls the centreline of the foredeck. Here there's an independent two-speaker Fusion AM/FM stereo with Bluetooth and USB port, as well as handy water-tight storage compartments and, of course, a deep ice box to keep your refreshments perfectly chilled while you soak up the sun.



1. and 2. The strong GRP hatch for 6000's fuel-filling point and drain lifts up with a gas strut support and folds down to form part of the side deck step. 3. and 4. A convenient pop-up cockpit joystick module ensures precise docking in tight quarters, and cleverly folds away out of sight and protection from the elements when not in use. 5. Wide, non-slip side decks and a well-placed, marine-grade and highly polished stainless steel rail ensure safe and easy access to the 6000's foredeck. 6. and 10. The huge sun pad sprawling the centreline of the forward deck is served by an independent and waterproof two-speaker Fusion AM/FM stereo with Bluetooth and USB port. 7. 8. and 9. Safely and neatly out of sight but right there when you need them - the 6000's anchor locker and separate winch compartment with fresh and saltwater wash-down outlets, as well as another deep rope locker to starboard, present a very clean and practical foredeck.







6



7



8



9



10



## STEP INSIDE

The free-flowing feel throughout the 6000 is enhanced with a large glass awning window which opens between the cockpit and spacious saloon, bringing the outdoors indoors and affirming the aft U-shaped gourmet galley as the central entertainment hub of the yacht.

Of course the galley boasts a premium brand induction cooktop, dishwasher, convection microwave oven and rangehood as well as three top-of-the-range drawer fridges and two freezers, as well as a convenient pull-out pantry. An optional tinted bronze glass finish to the overhead galley cabinets adds yet another touch of refinement to the varnished joinery used throughout the yacht.

Natural light in the galley is enhanced with fixed overhead skylights with block-out shade blinds and a second Webasto electric sunroof above the saloon dining, lounge area and helm. Air-conditioning is standard to both the saloon and galley however natural breezes are also captured through the sunroof and through opening windows to port and starboard.



1. Exquisite varnished cabinetry welcomes you into the 6000 Sport Yacht's interior and gourmet galley. 2. Owners have the option of a tinted bronze glass finish to the galley cabinetry for added elegance. 3. Large fixed skylights enhance the feeling of natural light and internal space, and can be screened when required. 4. The large aft awning window opens from the galley out and over the cockpit to ensure the free flow of space from the swim platform to the front windscreen, while also positioning the chef in the centre of the social scene.







The spacious and elegantly appointed saloon, with its soft-touch natural leathers and highest quality fabrics, is perfect for indoor entertaining, relaxing or even working whilst aboard. A U-shaped lounge with dinette table to port seats six adults, and a large two-metre, three-seater lounge opposite is large enough to enjoy a lazy afternoon nap and versatile enough to provide a work space or additional dining area. The lounge's central ottoman can also be used as an extra seat around the dining table for games or quality time with the family. This space can also be utilised to create a custom wet bar, if you prefer.

The extensive indoor entertainment system includes a 40" LED TV integrated with a Bose AM/FM stereo, DVD player with amplifier, sub-woofer and four speakers to the saloon, with additional speakers via a second-zone, two-speaker system to the cockpit.



1. The helm station is the true command centre of the 6000 Sport Yacht. Featuring a low-profile sports dash with sunken twin large display screens, every piece of navigational and operational equipment is to hand in a very considered manner. There is even a glove compartment for keys, mobile phones and glasses and a separate side compartment for the stowage of screen and equipment covers. Visibility from the helm station is clear and uninterrupted. The positioning of the navigation and engine controls and the joystick allow for a very relaxed cruising position as you steer this magnificent yacht via the joystick when under way. The twin electric Treben Italian leather helm seats are luxuriously comfortable yet practical with their lift-up front bolsters to allow a semi-standing position in rough weather. The helm dash panel has a distinctive automotive flair and style. 2. Overhead in the saloon the detail work is inspiring. Natural light and fresh air are introduced in abundance to the saloon via a large opening sunroof above the helm and saloon area. Aft and overhead in the galley glass skylights bring the day or night sky into the centre of the yacht. Screened protection or total blackout from the sun is a simple as sliding the Oceanair two-way blinds installed beneath the sunroof and skylights.









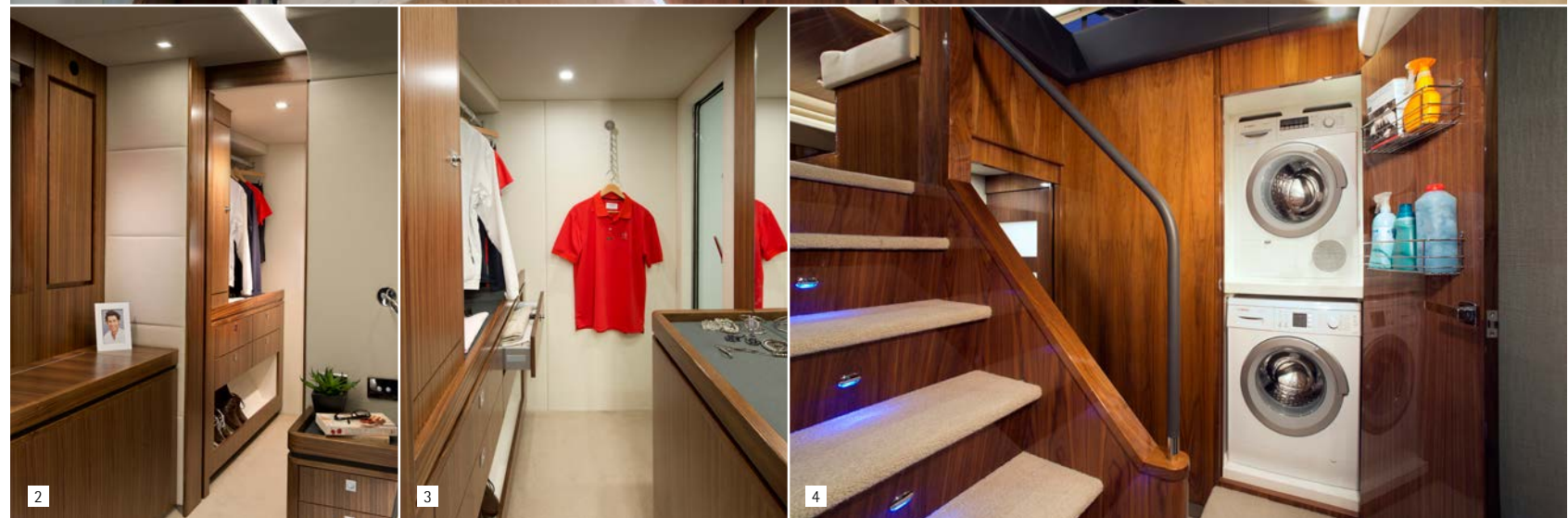
## STEP BELOW

Whether overnighting in a sheltered bay or on a long-distance coastal cruise, the beautiful and intelligent design of the 6000 Sport Yacht ensures supreme comfort for her owners and guests.

The fully flexible accommodation layout allows for up to four staterooms, or three with the presidential design that provides an enlarged floor plan for the full-beam master stateroom by positioning the master bathroom forward in a very versatile area which also has options for a teenager's retreat, office space, lower galley or fourth stateroom.

### Fit for a President

The owner's stateroom presidential design is an expansive and luxurious private retreat, with additional storage and a casual dining and sitting area to port which is ideal for a private breakfast or a quiet work space. The casual dining table also doubles as a fold-up make-up bureau. The presidential layout also features extra drawer storage at the base of the television, as well as additional forward full-length hanging wardrobe.



1. The Presidential ensuite bathroom is generous in every respect – proportion, storage and amenity. 2. and 3. Walk-in wardrobe of the master suite is deep and features ample hanging space. 4. With the Presidential Suite design, the laundry with stacked washer and separate dryer, is neatly concealed behind fine timber cabinetry and centrally located in the main companionway. 5. The Presidential master suite on the Riviera 6000 Sport Yacht stretches the full beam of the yacht and offers the ultimate owner's luxurious retreat.





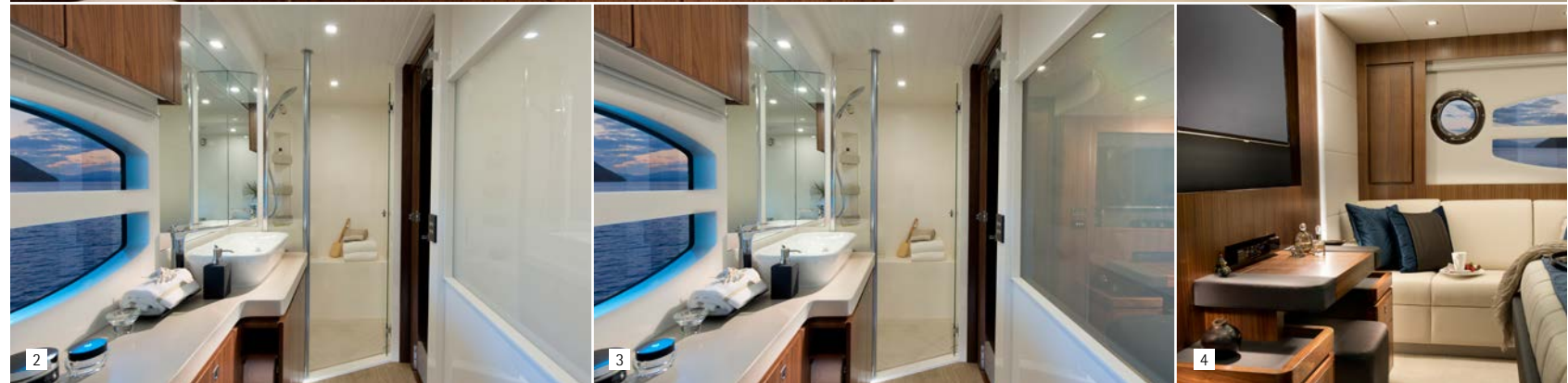


## The ultimate private retreat

In the standard layout, transition glass helps flood the full-beam master stateroom with natural light when the large and luxurious port-side ensuite is not in use, yet offers complete privacy at the press of a button. There is also a make-up table and ottoman forward and a three-seater leather lounge to starboard.

Both designs feature a king-size, walk-around bed with innerspring mattress amidships, contemporary timber-finish headboard and bedside tables, deep walk-in wardrobe aft, as well as a third and convenient C-Zone digital switching control panel. The master stateroom entertainment system comprises a bulkhead-mounted 40" LED TV and Samsung home theatre system, while deep windows on either side, as well as opening portholes on both sides, add a striking visual feature as well as ensuring plenty of fresh air.

The ensuite in each master stateroom design boasts luxurious fixtures, complemented by a heated towel rail and the highest quality Italian ceramic non-slip flooring. A frameless glass door leads to the large shower stall and includes a chrome showerhead on a slide bar, again complemented by the highest quality non-slip flooring.



1. Master ensuite bathroom in the standard layout features a giant hull window and large opening port hole bring an abundant level of light and fresh air into the ensuite. 2. Master ensuite bathroom in the standard layout features a switch-glass window between the ensuite and stateroom. When turned on, the glass turns a solid white colour and gives total privacy to the ensuite. 3. When turned off, the switch-glass is clear allowing natural light from the large ensuite window and port lights to filter into the master stateroom. 4. Forward in the master stateroom in the standard layout is a make-up table with ottoman flanked with drawers either side. The centre table top lifts to reveal a large make-up mirror and softly padded make-up compartment.







## GUEST ACCOMMODATION

The VIP guest stateroom forward features a queen island bed with innerspring mattress and hanging lockers port and starboard, its own ensuite with separate shower stall and contemporary style bowl and vanity cabinet above the solid surface bench top, with lots of storage below. Standard entertainment in this guest stateroom is a 22" LED TV/ DVD combination with Fusion AM/FM stereo, Bluetooth and USB port including two speakers. Fixed portholes are standard and bring in even more natural light, complementing the overhead deck hatch.

The starboard twin cabin with full-length beds also has an overhead deck hatch with Oceanair screen as well as an ensuite which doubles as the day head. The port-side cabin features adult-sized upper and lower bunks.



1

1. Starboard side guest cabin features twin adult-size beds. 2. The very practical and versatile lower five-seater atrium lounge can feature a fully concealed laundry with separate washer and dryer and related storage. This area can also feature TV and entertainment centre. 3. The dual purpose day head and guest stateroom ensuite bathroom. 4. A very versatile and practical 8 square metre space is located aft of the master stateroom and beneath the cockpit. This considerable space can be configured as either an optional utility room with generous storage or optional crew quarters, with access from the cockpit or via the walk-in robe in the master stateroom. 5. and 7. Forward VIP guest stateroom. 6. The attention to detail of the materials selection and finishes on the 6000 is a delight to the senses. 8. VIP guest stateroom ensuite bathroom.



2



3

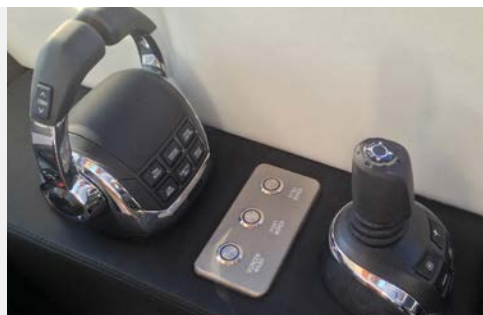


4









## The power and technology is yours

Having now launched hundreds of pod-driven luxury pleasure yachts, Riviera is at the forefront of a marine propulsion revolution that offers an excellent power-to-weight ratio for improved performance, enhanced torque, improved fuel efficiency, simple maneuverability, reduced environmental impact and quiet operation thanks to underwater exhausts.

In simplified terms, Volvo Penta's innovative Inboard Propulsion System (IPS) features twin pod drive units, each of which is capable of turning independently to provide the correct thrust to move the yacht in the exact direction required by the skipper easily controlling the system with either a steering wheel and throttles or a joystick.

The 6000 has a joystick at the helm and an additional joystick as standard in her cockpit so a skipper, either solo or with a novice crew, is able to simply push and twist the joystick and the yacht will respond immediately, pivoting in place or tracking sideways into a berth that's just long enough to fit the yacht.

IPS also offers a Dynamic Positioning System (DPS) for station-holding while preparing lines and fenders or while waiting off a fuel jetty, the convenience of Auto Pilot, manual trimming with optional auto-trim, as well as a highly-efficient Anti-Corrosion Protection (ACP) unit mounted to the transom to reduce maintenance of sacrificial anodes.

The three-blade nibral, forward-facing, counter-rotating propellers are protected by the premium anti-foul coating PropSpeed to achieve a long service life, as well as 316 marine-grade stainless steel line-cutters from Volvo Penta, for protection from ropes, fishing lines, plastic bags or nets – these precision-made line cutters create a very efficient rotating cutting action without increasing drag or fuel burn.

The 6000 Sport Yacht employs the revolutionary Volvo Penta propulsion system with twin IPS2-950 (533kW/2 x 725hp) D11 engines and pod drives. This is a perfectly matched drive package for the 6000 and the system's Class 5 commercial rating assures enhanced reliability even for high-use, high-speed planing commercial vessels.

Additionally, the IPS2-950 system is fully certified under the Det Norske Veritas and Germanischer Lloyd (DNV GL) classification system.

## Window to the future

To give you total command of the 6000 Sport Yacht, Volvo Penta's state-of-the-art Glass Cockpit navigation system blends new technology with dependability and practical functionality.

The Glass Cockpit system provides a very clean, easy-to-use system with enhanced overview and control of both engines and navigation, including GPS, sounder and radar, even auto-pilot and optional charts ... and all in one place.

Integrated with the IPS Electronic Vessel Control (EVC) system, the Glass Cockpit gathers all driver information and displays it in one location. The easy-to-handle, pinch-to-zoom displays give you instant control. The ergonomic design and interface for the dashboard offers with push-buttons on the controls and touch-buttons on the screens.

Just one clever feature of the Glass Cockpit is the unique Auto Guidance feature that searches through all relevant charts to create a route you can follow – and avoid shallow water, buoys and other obstacles. Coupled with the Auto Pilot, it not only shows the way, it takes you there.

Or, if you prefer, the Glass Cockpit also features full joystick steering whilst underway.

## C Zone simplicity

The fully integrated CZone digital switching system enhances the ease of monitoring and operation of the Riviera 6000's onboard systems even further, extending centralised, touch-screen control to lighting, pumps, batteries, entertainment systems and appliances.

CZone allows owners to operate multiple circuits at a single touch, energising all lighting and electrics depending on your requirements. It comes pre-programmed with three Modes – "entertaining", "cruising" and "dock unattended" – and these modes can be customised by the owner so the system works exactly how you want.

Other user-friendly features include interior light-dimming, timer controls, automated circuit control, wiper speed and wash functions. There's also a "service" mode that shuts down all power and systems.

Based on industry-proven Controller Area Network (CAN) technology, the CZone system offers DC and AC switching and over-current protection. Full systems monitoring (with alarms) including AC voltage, current, frequency and kilowatts, DC voltage, current and remaining battery capacity, along with tank levels and indication for systems in operation, is clearly displayed on the 10-inch touchscreen at the helm and 3.5-inch colour control screens in the galley and master stateroom. There's also the option of additional iPad connectivity, so you can control CZone from anywhere onboard your yacht.





## Engineering excellence

Access to the flow-coated engine room – with acoustic and thermal insulation and LED lighting – is via a deck hatch from the cockpit or through a watertight door from the versatile 8m<sup>2</sup> (86.1ft<sup>2</sup>) utility area. It's here that you will really begin to appreciate the careful consideration for which Riviera is renowned globally in terms of its engine rooms.

With plenty of room to move, you'll note that all through-hull fittings on or below the waterline are fitted with ball valves, all hoses are double clamped, and all the wiring coded, numbered and pre-assembled in looms to ensure trouble-free maintenance and repairs.

You'll also find a tap and hose feeding from an 800-litre (211 US gal) freshwater tank, as well as a massive fuel capacity of 3300 litres (872 gallons). The fuel gauge is monitored at the helm via the Glass Cockpit system, and there's also a sight gauge on each wing tank for manual inspection.

The impressive commercial air intake system helps to keep the engine room temperature well below the engine manufacturer's formal recommendation, reducing fuel consumption even further, while the air-conditioning units are mounted high so gravity feeds condensation water into the common drain lines located on either side of the yacht and which drain aft and overboard.

All onboard drains also feed into these common drain lines while the advanced mist elimination system with veins draws moisture from the air and feeds directly overboard. Four automatic bilge pumps with manual override are located at various points throughout the hull and also pump directly overboard.

There's even a dedicated space for a gyroscopic stabiliser – yet another example of how Riviera is ready to embrace all innovations that make boating even more enjoyable.

## Electrical Excellence

All batteries on board the 6000 Sport Yacht are maintenance-free to ensure carefree boating and are housed in special battery boxes in accordance with American Boating and Yacht Council (ABYC) and the European Union's CE industry standards.

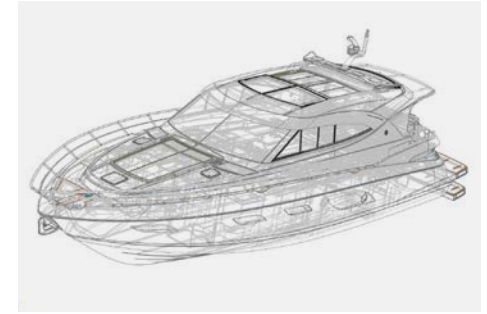
The 6000 has two starting battery banks comprising two batteries per bank for the port and starboard engines. The house battery bank comprises six batteries, and there are two batteries in the auxiliary bank. Individual alternators for each battery bank ensure charging systems are optimised whilst underway and an emergency parallel function provides increased reliability, just in case you are ever faced with a flat start battery bank. All battery banks are isolated at the main battery panel in the utility room.



The house power is 24-volt, which allows for simpler charging, lower current draw and smaller cables (further reduced weight) than equivalent 12-volt systems. The Mastervolt AC-DC inverter (5kW 230V 50HZ/4kW 110V 60HZ) provides power to the icemaker, entertainment systems and all outlets onboard, ensuring watching television while relaxing quietly at anchor is whisper-quiet.

The air-conditioning, cooking appliances and many more comforts of home are powered by the Cummins Onan 22.5kW (75 Amp 50HZ) generator, which features a water separating muffler, sound shield, remote stop-start function, state-of-the-art diagnostics and hour meter. The generator's optimised mounting system greatly reduces vibration.

LED lights provide trouble-free boating while reducing electrical current draw. The lamps use less than 10 per cent of the power required to run a bulb lamp – no bulbs mean no maintenance and long service life. Additionally, Residual Current Device/Ground Fault Circuit Interrupter (RCD/GFCI) provides protection over the entire yacht and also complies with ABYC and CE standards for safer boating.



## Impeccable pedigree

The confident poise of the 6000 Sport Yacht is just as evident offshore as it is at anchor – her solid and robust hull with keel is the evolution of our rich 35-year heritage of building almost 5200 world-class luxury motor yachts that are proven in the sometimes challenging Australian offshore conditions.

Our legendary build quality combines superior-strength hand layups with solid GRP hull from the waterline down, structural core material in the hull flanks, main deck and hardtop. Precisely fitted, lightweight resin transfer-moulded small parts have a double-sided gelcoat finish and are pre-fitted for a perfect seal when all major components are bonded together.

Even before a single piece of timber was cut for the plug work, the 6000 was created in-house using industry-leading Unigraphics 3D computer software, allowing Riviera's team of talented and passionate designers and engineers to put to purpose every inch of available space. Our designers have placed a firm focus on convenient access to every key maintenance point so any issues can be quickly identified and addressed, and service costs are kept to a minimum.

Of course, this thoughtful consideration for our Riviera family of owners is a key part of our ethos of doing all we can to help our valued owners achieve ... 'the ultimate boating experience'.









Twin bunk cabin to port



Lower lounge / TV area



Presidential suite design



## CRAFTED WITH PASSION

The premium quality of our owner care at Riviera is directly commensurate with the quality of our built-to-last, world-class luxury motor yachts.

Your experience of dealing with Riviera – from the selection of options, electronics and décor all the way through to routine maintenance and repairs – will be undertaken with the utmost care.

Our highly skilled team at our world-class, 14-hectare manufacturing facility on Australia's Gold Coast consults with internationally acclaimed naval architects, designers and engineers. Consultation with our global family of yacht owners also plays an important part in our new model development program.

This ensures Riviera continues to exceed the constantly evolving desires of luxury motor yacht aficionados worldwide.

## AWARDED FOR EXCELLENCE

Riviera's vast collection of local, national and international awards is testament to the pride and passion that goes into creating our premium range of luxury motor yachts. These awards span world-best practices in the spheres of education and training, employment, innovative manufacturing techniques, quality of workmanship and pioneering design.







The home of Riviera – our 14-hectare, state-of-the-art manufacturing facility on the Gold Coast of Queensland, Australia. This is the largest facility of its kind in the Southern Hemisphere. Each year in May, this world-class facility plays host to the educational and fun-filled Riviera Festival of Boating and the enormous Gold Coast International Marine Expo.



## RIVIERA'S ETHOS INSPIRES CONFIDENCE

In the global luxury motor yacht market, the name Riviera stands synonymous on an international scale with hallmark luxury, technology, ease of operation, blue-water sea-keeping ability and unrivalled owner support.

This has not come about by chance – underpinning our remarkable success is an ethos of excellence reflected throughout our rich 35-year heritage and the launch of almost 5200 motor yachts that today can be seen cruising the oceans, seas, rivers and lakes of the world.

Our rigorous pursuit of the highest possible standards relates equally to the quality of materials, workmanship and technology that goes into building every new Riviera as it does to our commitment to our people and our ethical dealings, to our social and environmental sustainability, and to our renowned customer care.

This is a key part of what we like to call: 'the ultimate boating experience.'







The growing Riviera global network of dealers now spans 60 countries. Find a dealer near you at [RivieraAustralia.com](http://RivieraAustralia.com)







Electronics play an ever-increasing role in the pleasure, performance and safety of luxury boats, and the choice of equipment that is available today is vast. In fact, selecting the equipment that meets your needs can be a very challenging task. R Electronics is here to help: we source the best systems and products from around the world; we are experts at matching technology to individual requirements and work closely with Riviera's design team and Riviera's global Dealer Network to create systems that maximise your pleasure and safety.

[RElectronics.com.au](http://RElectronics.com.au)



A passion for quality and good design steers everything we do at Riviera — and this is reflected in our exclusive range of clothing, accessories and decor items. If you love your Riviera, you'll feel at home with the Riviera Collection: casual yet stylish, comfortable, practical and made to withstand the rigours of boating life.

The Accessory and Decor Collection ranges from a storm jacket to stylish crockery. To make your luxury Riviera or Belize truly your own, we offer a wide choice of fabrics, finishes and color schemes that allow you to customise your yacht. Of course, we also have experienced designers who can advise and assist with your individual selection.

It is a real pleasure to own and use things that are aesthetically pleasing, work well and last — and because it is only appropriate that such qualities are found on board a Riviera, we supervise each individual interior scheme from creation to installation.

Riviera has the total leisure and style solution.

[RivieraParts.com.au](http://RivieraParts.com.au)







## THE RIVIERA EXPERIENCE

When you buy a Riviera or Belize, you really are joining a family.

Through our global network of dealers spanning some 60 countries and every continent of the world, owners of our world-class Riviera and Belize luxury yachts regularly receive exclusive invitations to our renowned educational workshops and seminars, as well as fun-filled social events to celebrate life with like-minded people.

This unrivalled owner support also extends to our special Experience events, where the sheer exhilaration of blue-water cruising can be enjoyed with the reassuring confidence of knowing experienced skippers and engineers are always close at hand.

Of course these are the passages that create very special memories that last a lifetime and, importantly, are often the catalyst for long-lasting friendships.

This is a key part of how we strive to help Riviera and Belize owners to enjoy all the rich and rewarding benefits that only boating can offer.







## Riviera 6000 Sport Yacht

### SPECIFICATIONS

|   |                      |                       |
|---|----------------------|-----------------------|
| Length Overall<br>(inc. swim platform)    | 19.30 m              | 63' 4"                |
| Lh to ISO8666 *                           | 17.60 m              | 57' 9"                |
| Beam (inc. gunwale)                       | 5.38 m               | 17' 8"                |
| Maximum Draft (inc. props)                | 1.44 m               | 4' 9"                 |
| Dry Weight ** (approx.)                   | 27,800 kg            | 61,300 lb             |
| Fuel Capacity ***                         | 3,300 L              | 872 US gal            |
| Water Capacity                            | 800 L                | 211 US gal            |
| Holding Tank Capacity                     | 500 L                | 132 US gal            |
| Sleeping Capacity                         | 8 - 10 persons       |                       |
| Cockpit Area                              | 10.60 m <sup>2</sup> | 114.1 ft <sup>2</sup> |
| Bridge Clearance                          | 4.34 m               | 14' 3"                |
| Standard Engine<br>Volvo Penta IPS950 x 2 | 533 kW               | 725 hp each           |

### Riviera Clarification of Specification

\*Length of the hull (Lh) to ISO8666: Includes all structural and integral parts (ie. the moulded length of the hull). It excludes parts that can be removed in a non-destructive manner without affecting the structural integrity of the craft, eg. pulpits, outdrives, driving platforms, rubbing strakes.

\*\*Dry weight represents the estimated minimum weight of a boat with standard engines and options, no fuel or water on board, no equipment or provisions and no personnel. The stated dry weight may be exceeded.

\*\*\*Denotes net tank capacity. For useable capacity do not rely on more than 90% of tank capacity. Actual capacity will vary according to boat trim and sea state.

Speeds are subject to normal weather conditions, fuel and/or water levels, passengers and equipment loads.

Refer to your Riviera Owner's Manual and your Dealer for height to hardtop and maximum height details.

The specifications in this document are not complete or definitive and are subject to change without notice and therefore may not be current. Riviera will not be liable (in contract, tort or otherwise) for any loss resulting from the inaccuracy of any information contained in this document.

Specifications may vary on a regional basis. Some images in this brochure may include non-standard or after-market options.

### Warnings

Riviera is committed to building the best luxury cruisers, tailored to suit specific countries and their individual compliance laws and regulations. Riviera equipment and build specifications approved for one country may not be compliant with another country's safety and equipment regulations and as such those cruisers may have no recourse to Riviera extensive manufacturer's warranties.

Each country and State has different safety equipment standards.

It is important that you ensure the requirements in your jurisdiction are met prior to the vessel being used.



## RIVIERA WARRANTY

### LIMITED EXPRESS WARRANTY

Riviera Australia Pty Ltd. A.C.N. 139 663 906 (Riviera) makes this Limited Express Warranty (Warranty) to the original retail purchaser of a vessel manufactured by Riviera, provided the vessel is purchased from an authorized Riviera dealer and said first retail purchaser registers this Warranty with Riviera within 30 days of the purchase. This Warranty is the only warranty provided by Riviera, express or implied, with respect to any vessel manufactured by Riviera.

#### Five Year Limited Structural Warranty:

Riviera warrants to the first retail purchaser that for five (5) years after the date of delivery to the first retail purchaser, and for the period before it is delivered to the first retail purchaser, that the hull, deck, fly bridge and hardtop shall be free from structural defects due to material or workmanship, under normal non-commercial use, that result in any delamination or separation of the stringers or composite structure.

A structural defect includes the following:

- Structural failure of the fiberglass hull, deck, flybridge and hardtop;
- Structural failure of any parts glassed onto the above components; or
- Structural failure of the joints between any of the above components.

The structural warranty does not apply to the following:

- A water leak through the joints between the hull, deck, flybridge and hardtop;
- Fiberglass small parts failures;

- Parts that are not manufactured by Riviera;
- Interior failures, window or hatch failures;
- Damage resulting from misuse, abuse, negligence, improper docking, alteration, vandalism, accident or lack of performance of normal maintenance;
- Any charges incurred by any vessel returned to the factory, dealer or authorized agent for inspection prior to authorization of warranty repairs;
- The cost of removal or reinstatement of a part, or disassembly or reassembly of the unit of which it is a component;
- Heat and/or sun damage to the hull and/or gelcoat on hulls that are painted a dark color;
- Owners other than the first retail purchaser, or in relation to the Hull only, subsequent owners to whom the structural warranty of the Hull has been validly transferred in accordance with this Warranty;
- Any vessels sold to the first retail purchaser by anyone other than a Riviera dealer listed on <http://riviera.com.au> on the date of the purchase (Authorized Riviera Dealer); or
- Any item which Riviera has not been notified of within thirty (30) days of the issue becoming apparent.

The above list is not intended to be exhaustive and Riviera may, at its absolute discretion, elect to refuse any warranty claim whatsoever.

Vessels that go into a syndication or shared ownership program are entitled to the standard five year structural warranty, subject to fair wear and tear on the Vessel.

#### Transfer of Structural Warranty:

In reference to the structural warranty of the Hull ONLY, Riviera may agree in its sole and absolute discretion, to transfer the hull warranty to a subsequent owner of a vessel, who purchases the vessel from an Authorized Riviera Dealer, upon application and payment of a \$1000.00 Australian dollar transfer fee. Such transfer will only be effective upon confirmation in writing from Riviera. Where Riviera does approve the transfer of the remaining term of the hull warranty to a subsequent owner in writing, then such hull warranty will be transferred for a period of not more than a total period of five (5) years from the date an Authorized Riviera Dealer first delivered the vessel to the first retail purchaser.

#### One Year Limited Non-Structural Warranty

Riviera warrants that for one (1) year after the date of delivery to the first retail purchaser, and for the period before it is delivered to the first retail purchaser, all vessel components manufactured by Riviera shall be free from defects due to material or workmanship under normal non-commercial use. On components not manufactured by Riviera, Riviera shall assign to the first retail purchaser the warranties extended by those manufacturers as allowed.

The non-structural warranty does not apply to the following:

- Parts that are not manufactured by Riviera;
- Any charges incurred by any vessel returned to the factory, dealer or authorized agent for inspection prior to authorization of warranty repairs;

- The cost of removal or reinstatement of a part, or disassembly or reassembly of the unit of which it is a component;
- Heat and/or sun damage to the hull and/or gelcoat on hulls that are painted a dark color;
- The installation of any equipment by a dealer or other installer;
- Any installation of products not to Riviera's recommended specifications, because of the possibility that the use of these Products will exceed Riviera or government specification for overpowering, steering, handling, speed and safety;
- Owners other than the first retail purchaser;
- Any vessels sold to the first retail purchaser by anyone other than an Authorized Riviera Dealer;
- Any item which Riviera has not been notified of within thirty (30) days of the issue becoming apparent.

The non-structural warranty for vessels that go into a syndication or shared ownership program expires after the earlier of two-hundred and fifty (250) hours of use or six (6) months from the date of delivery to the syndication or shared ownership program, which ever occurs first.



**RivieraAustralia.com**



Our PASSION

To create the *ultimate*  
boating experience.

