



RIVIERA
LUXURY MOTOR YACHTS

 **BELIZE**



Long range cruising that goes beyond anything you've experienced

Edition 18.2



Building the dream

"During the design development phase, we spoke to a number of very experienced Riviera owners from around the world. Without exception, each were seeking a new style of motor yacht.

"Their dream was a blue-water yacht featuring outstanding sports-inspired looks and sports performance. A yacht that combines sport fishing and other water sports capabilities with ultra-luxurious interiors. They were desirous of a foredeck entertainment centre and fully enclosed flybridge with internal stairs. A covered mezzanine dining area, crew cabin or utility space, plus the surety of high bulwark side decks, were considered vital inclusions.

"Ideally this would be a design they could venture offshore with complete confidence for extended periods, over hundreds even thousands of nautical miles ...

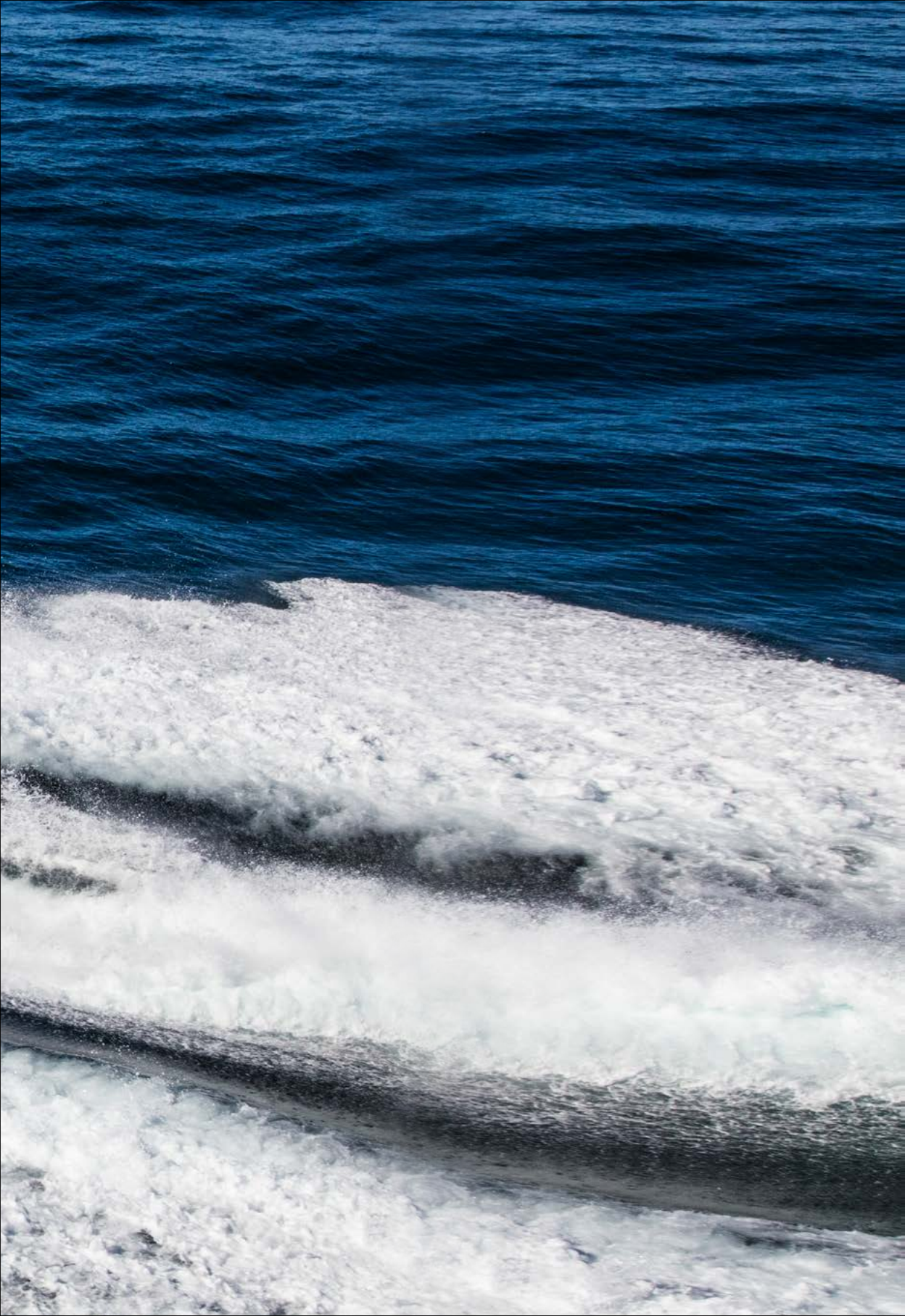
"Our new Sports Motor Yacht comprehensively delivers on their brief."



Riviera Owner and Chairman, Rodney Longhurst.







Riviera Sports Motor Yacht: Redefining the class and your expectations

Forever improving, refining, evolving ... Since 1980, striving to excel, day in, day out, has been at the heart of the Riviera design experience.

Rarely though has our passionate embrace of timeless aesthetics coincided so perfectly with our restless search for next level standards of structural strength and engineering virtuosity.

Welcome to the luxury sports motor yacht collection which transcends everything you have ever dreamt of from long range, blue-water cruising.

Our new Riviera 68 Sports Motor Yacht is a stunning meld of sports looks, sports performance and sporting cockpit, renowned Riviera luxury appointments and superior offshore, extended cruising capability. All highlighted by their whisper quiet ride and super smooth running at speed. Painstakingly developed over a two-year period, they are set to redefine the class and your expectations.

In designing the hull, we partnered with esteemed naval architects, Mulder Design of the Netherlands, creators of three of the world's fastest super yachts. After extensive international tank testing, the result is a hull design that delivers a smooth, soft and dry ride in a wide range of offshore conditions.

Conceived and built in-house to our exacting standards on Australia's Gold Coast, this beautiful new series was inspired by a wish list from our global family of experienced Riviera owners seeking to strike out much further for far longer, to celebrate true long range luxury cruising the Riviera way, with loved ones and family.

A world away from the everyday, the most alluring ports and anchorages in either hemisphere are well within your reach.

Onboard your Riviera Sports Motor Yacht, you will fall under an exotic spell, revelling in glorious sights, sounds and the absolute lap of luxury - exploring, diving, snorkelling, kayaking, fishing, creating and sharing truly memorable, precious moments - for just as long as your schedule allows or heart desires.





The wide blue beyond launches from here

The Riviera 68 and 72 Sports Motor Yacht: Two uniquely specified craft that share a single vision, with the 72 even larger, grander and more spectacular still - offering greater cockpit and mezzanine space and greater standard power and fuel capacity.

So come experience your cockpit for yourself. Step easily from the dock onto the truly spacious boarding platform and enter via either of the outward opening transom doors.

Whether you're carrying luggage and supplies for the weekend, or an extended cruising period, it all starts here. What a welcome, what a sight greets you. The deck itself is an image in teak; beautiful and vast. In the near distance, meticulously sculpted shapes delight the eye and glinting stainless steel bedazzles.

Anticipation of a great journey ahead invariably builds.

In typical Riviera fashion, a wealth of practical, well considered features underpin all this expansive cockpit space and design appeal. An alloy plate reinforces a section of the floor so you can easily fit a game chair or outdoor table. The cockpit is self draining. All hatches have heavy duty lock downs and come fitted with gas struts for easy access. There is an enormous volume of storage space including large lockers in the transom, side coaming lockers and deep fish bins in the floor.

Pride of place in the cockpit - facing aft, and concealed under a moulded, gas strut-assisted lid - is the double barbecue. Equipped with LED lights and a wet bar with a sink, tapware and an insulated cool box, you're all set to serve the freshest seafood and coolest drinks you and your guests will ever enjoy.

Picture the whole family now: It's dusk at anchor in the islands. Refreshments have just been served in the cockpit. A pod of dolphins cruise by, as chatty and happy in their element as you all are in yours...









Remarkable safety and entertaining to the fore

High wide side decks illuminated in soft blue LED light ... non-skid surfaces, thoughtfully placed 316 marine grade stainless steel handrails and a powerful surety that passenger safety comes first.

For practical reasons of anchoring and tender launching, for sightseeing, entertaining and pure unadulterated relaxation, the foredeck of your Riviera Sports Motor Yacht will attract many visitors. All will travel forward in complete safety.

Up here our designers have created a 'best of both worlds' environment.

Practically speaking, the foredeck boasts plentiful storage lockers to port and starboard discreetly hidden from view. There is a deep well built into the forward deck to ensure crew safety when accessing all anchoring equipment - including your stainless steel 80kg Ultra anchor, with its remote control vertical winch.

Should you choose to store your tender here, the 550kg davit with low profile boom and electric winch makes for secure storage and effortless unloading.

Time for a break? At anchor this fabulous entertaining area comes into its own. Take a seat in the deeply comfortable forward facing, fold out two-seater lounge, a very desirable foredeck lounge option. Now - thanks to two additional, really large fold away lounges - you've created your own U- shaped, 8-seater conversation area, complete with ice box and a removable central teak table. Cheers.

Of course the party up here has only just begun. Fortunately, there are two insulated cool boxes to port and starboard. You can turn up the volume via the dedicated foredeck four speaker stereo with smartphone interface. Alternatively should you desire a true party pavilion feel, simply choose the sun shade awning option. Glorious.



The sheer magic of the mezzanine

Space. The wonderfully generous dimensions our designers have had to work with in the cockpit and mezzanine area have given their talents full permission to shine. How it shows. So please, step up to the mezzanine now via the teak steps inlaid on both sides of your cockpit. Look around, there is a lot to appreciate and see.

First is the location itself: the entertaining centre of your long range cruising yacht. To see it in its full glory, simply open the two tinted and tempered glass doors that frame the space on either side, encased in their resplendent, ship-like stainless frames. Now open out the large central awning window ... here you are, centre stage in the mezzanine at its best.

Enjoying a moment on the extremely comfortable forward facing lounge, you can see all the way through to the magnificent saloon. That is, if you can take your eyes off the alfresco luxury all around.

Your glassware and Riviera crested tableware rest on a pair of highly polished, folding teak tables. In concert with golden-coloured teak decking at your feet and soft concealed lighting above, you'll savour the central mezzanine ambience day and night. Its generous dimensions easily accommodate enough occasional furniture to invite the whole extended family.

Forward - making ingenious use of the space beneath the gleaming opened feature awning window - is your designer breakfast or conversation or sundowner bar.

With its two swing-out style bar stools, stainless steel framed solid benchtop and easy proximity to the galley, your snacks and meals are never far away. And with an ice maker and drawer storage beneath, you can always have a cooling drink at hand.

Completing the picture of uplifting lifestyle luxury is a portside, four speaker LED TV that folds down from above to entertain all gathered here - the mezzanine and cockpit in a class of its own.









A wonderfully welcome addition

From the mezzanine take the portside door and descend the staircase to the day head and adjacent crew cabin or utility room space. This area - with such easy access from the central entertaining and gathering hub - is a truly welcome design addition. Clever, convenient, inspired.

Now, using the bathroom no longer means trailing through the whole boat with wet or sandy feet. Instead, from the mezzanine move directly down stairs - note the well located washer and dryer - turn right, and there you are, in the designer aft day head. Very convenient, suitably luxurious ... What's more, a few steps away, is another welcome Riviera design addition - the versatile aft crew cabin or utility space.

This space offers you a great range of choices. You can use it to accommodate additional guests, accommodate crew, or deploy it as a utility room to store all your water a equipment.

With its own private entrance door, reverse cycle air conditioning, an option of one or two Pulman-style beds, storage locker and opening porthole, the crew cabin features a standard of appointments you expect from Riviera.

Far more than a traditional galley

By any meaningful measure – its size, layout, standard of cabinetry, decor and appointments – the galley of your Riviera Sports Motor Yacht could easily pass for a fine designer kitchen.

This new galley redefines onboard expectations for reasons of location too.

Far removed from the isolated galleys and food preparation areas of old, it is situated midway between the saloon, mezzanine and cockpit. This is, thanks to the signature Riviera embrace of flowing lifestyle design, right in the centre of the mid-deck onboard universe.

So, here in this social and yes, superbly appointed hub, expect lots of company from your guests and the best kind of practical help from our designers.

A complete set of contemporary stainless steel appliances are all within easy reach, effortlessly integrated into handcrafted, stone-finish benchtops and walnut varnished Riviera joinery. Additional storage lockers with positive locking hardware are built in overhead, along with large pull out pantry drawers on commercial grade runners forward.

Helping you create gourmet meals in no time are a Miele combination oven and microwave with grill, 4-element induction cooktop with potholders and rangehood, large efficient dishwasher and four refrigeration and two freezer drawers.

Okay we can't make everybody a great cook, but we can create a great inspired space far removed from the traditional galley, to cook and socialise in. And that is exactly what we have done.









Settle into the luxurious saloon

The further afield your travels take you the more you will luxuriate in all the refinements and comfort of your saloon. At different times of the day, wherever the compass points you, it will serve as a blessed place to sit, converse, dine, conduct business, grow closer, entertain honoured guests and unwind, whilst always operating as your favourite retreat.

The large forward windscreen and the wall to wall, sliding saloon windows reveal a constantly moving panorama of sky and sea, natural and exotic sights outside. Stunning and inspiring. Inside, you deepen relationships and forge memories you will long count as highlights of a fortunate life.

The light and space our designers have had to work with has evolved into a wonderfully warm and open environment. Step into it now and look around.

Notice how peaceful and quiet everything is: this ultra desirable ambience is created by the skillful integration of sound dampening fabric and leatherette panelling. Overhead LED lighting and reverse cycle air conditioning complement the appeal.

Forward of the galley to starboard discover the L-shaped, 8-seater fine leather dinette lounge and table. Folding at both ends, built to manually slide forward or aft, and a vision in exquisitely polished timber, your table is as beautiful as it is practical.

To port your guests will rest easy in the large and fabulously comfortable designer lounge with matching reversible ottoman or coffee table. Easily viewable from here, or the dinette, is the 55-inch LED TV, rising majestically at the touch of a button forward of the galley. Residing in an adjacent cabinet cleverly hidden from view are the Blu-ray player and home theatre sound system, with five concealed surround speakers and two more in the cockpit.

What else will impress? Frankly everything: including the handcrafted internal saloon staircase leading to the flybridge and the thoughtfully located portside pantograph door giving you easy access to mooring lines, side and foredeck - and a great way to fill the saloon with fresh air.







Classic master stateroom design

Where great flexibility meets absolute luxury ... the Riviera Sports Motor Yachts have been specifically designed to fulfil your desires to go further and stay away for longer. All in the highest state of comfort. As you would expect the accommodation deck expresses this guiding philosophy in eloquent and luxurious terms with a remarkable degree of in-built design personalisation.

In essence you have an enviable choice between the four stateroom, four bathroom Classic or the three stateroom, four bathroom Presidential layout, boasting its grand full beam master stateroom.

There is also design provision on the accommodation deck for crew quarters, a teenage retreat or dedicated sports and water toy storage.

In either the classic or presidential design, your master bathroom is pure luxury; designed to make you feel totally at home, wherever in the world you may be. Riviera designers have spared no effort in creating an ensuite that goes beyond what you might expect. With a vanity cabinet that has been beautifully handcrafted, solid surface bench top, designer full-sized shower and more, the effect is both appealing and contemporary. And perhaps one of the nicest touches? A classic ocean going porthole that opens to the natural elements - thoughtfully alarmed to the helm to ensure it's shut when underway.

A true designer bathroom that lets you reinvigorate your being with tangy fresh sea air.

The choice is yours.

A delightful question to contemplate ...



Presidential master stateroom design

Looking after your needs, masterfully ... whichever layout you ultimately decide upon the keynote is pure luxury, an invitation to get away often from the everyday and stay away as long as possible. Here, in your palatial master stateroom, you will want for absolutely nothing no matter how far reaching the journey.

The master stateroom is located aft, extending full beam - including the designer ensuite - in the classic design. In the presidential design, your bathroom is located forward on the starboard side, creating an even more spacious, grander retreat.

A supremely comfortable king-sized island bed awaits as you enter this private retreat. The plush feature headboard in concert with deep pile carpet and an elegant array of LED lighting overhead, make for a warm welcome. Grain-matched bedside tables with leather inlays and a highly polished timber drawer unit running full length to port showcase the expanse and our designers' talents.

Naturally, both the master and ensuite feature reverse cycle air conditioning. However ... large hull picture windows framing either side, fill the space with natural light and a special feeling of being at one with your natural surrounds. A feeling accentuated on balmy days by fresh fragrant air from the opening portholes.

How about storage? Well, we've counted on you being away for extended periods. You'll discover roomy drawers under the king sized island berth, as well as a gas assisted lift for bulk storage. Then there are the pair of extremely handsome cedar-lined hanging lockers with shoe shelves, full length hanging space and a thoughtful Riviera extra ... a safe for your valuables.

Relax and unwind. Your 40-inch LED TV, Blu-ray player and home theatre system with 5 speakers is standing by, waiting to entertain: to take you on a different kind of voyage.

In the presidential design, with all that extra space at your disposal (with your bathroom forward to starboard), enjoy the views, a book, a quiet moment or an intimate breakfast, with facing seats around a timber writing and beauty bureau with leatherette inlay.









The large, very accommodating guest staterooms

The Riviera Sports Motor Yacht exemplifies luxury on a large and ambitious scale, not least for the family and friends who join you on your grand adventures. Look forward to accommodating them in first class fashion in either the forward VIP guest stateroom with its private ensuite, or the main port guest stateroom with combination ensuite and two-way entry day head.

Should you decide on the classic layout you have a third option, namely the starboard guest stateroom with twin adult-size Pullman berths.

The air conditioned VIP stateroom features appointments befitting its name: private entry, a walk-around queen-sized bed, stunning Riviera cabinetry, cedar-lined hanging locker to starboard with shelving and auto LED lighting, plus cedar-lined storage locker to port. All framed by spectacular fixed hull windows to port and starboard in tinted and tempered glass.

Guests enjoy a skilfully crafted VIP ambience and appreciate the high quality entertainment courtesy of the 32-inch LED TV and home theatre system with two speakers and iPod interface.

The adjoining VIP ensuite is a wholly contemporary designer space boasting cool clean lines and five star decor. Guests luxuriate in peerless Riviera appointments including a handcrafted vanity cabinet, full-sized shower with frameless glass door and even heated towel rails.

In the guest stateroom to port air conditioned luxury also predominates, albeit with a unique and inspired touch of sleeping flexibility. Once again that's deep pile carpet underfoot and LED lighting overhead. There is a LED TV and entertainment centre, cedar-lined hanging locker and ellipse-shaped bonded-glass port window, although this time it has a striking opening porthole at its centre.

Side by side berths conceal lots more storage beneath and a wonderful surprise built-in. Simply touch a button and the berths will smoothly slide together to form a beautiful, restful double. Now, that's clever Riviera design in action.

Here, a combination ensuite and two-way entry day head complete a pampered guest experience. As with the VIP ensuite, guests are always pleasantly surprised by the space, luxuries and design flair - a frameless, full sized shower, designer vanity, solid surface bench top and large mirrors.





A classic addition

In the classic design your additional accommodation option, the starboard guest stateroom - with adjoining day head - features two adult-sized Pulman-style beds, bedside table, plush carpet, cedar-lined hanging locker with LED lighting, reverse-cycle air conditioning and private entrance door.

When the finest materials meet superior flair and commitment, true luxury is created. That's exactly what you and your guests will experience on the accommodation deck of these unique yachts.

The flybridge inside story

Ascend the grand internal staircase (with its polished walnut treads) from the saloon, you arrive in the flybridge. Open the polished, stainless steel encased door and you step out into a glorious entertaining, relaxation and docking space.

There is so much that is exciting and innovative about your flybridge, it is a story needing to be told in two parts: the four-sided, enclosed flybridge and aft flybridge deck area.

The flybridge beyond anything you've ever experienced. Light and space courtesy of wrap-around glass defines life here. It's a feeling of being on top of the world, a feeling made to experience time and again.

Something else is apparent right away too. Or more accurately, completely missing - engine noise - especially at speed. The flybridge of the Riviera Sports Motor Yacht, indeed every part of these astonishing craft, are w-h-i-s-p-e-r quiet ... even when the magnificent twin MAN V12 engines are in full flight.

Strategically located stainless steel grab rails make moving around this space, even at speed, nice and easy. Come on then, the flybridge's L-shaped leather designer lounge with matching ottoman coffee table is looking for company. Sit down, enjoy the plush comfort, pour yourself a cool drink from the refrigerator drawer nearby and stay awhile. A fold-out double bed provides additional accommodation for overnight guests.

Feel the urge for entertainment, either on a personal or celebration party scale? Standing by - housed in its custom made, highly crafted timber cabinet - is the 32 inch LED TV entertainment centre with iPod interface and six dedicated speakers.

The sensational flybridge

In concert with the adjacent, large opening rear awning window, clever design has made flowing, inside-out flybridge living possible - an upstairs equivalent of the signature flowing saloon, mezzanine and cockpit areas below. Underway this is the place to be out in the fresh air, at one with sky and sea. At anchor, it serves as a splendid private breakfast retreat or 'boutique' entertaining area.

Some owners prefer the striking teak decking option, others the low maintenance GRP. All approve of the overhead LED lighting, red night light and flood lights to the cockpit, while the sporting minded welcome the eight rod holders on the aft rail.

There you are now sharing conversation friendship around the folding teak feature table, resplendent on its gleaming stainless steel pedestal. The nearby wet bar, equipped with fridge drawer, ice maker, sink and bench top for easy preparation, ensures a constant supply of food and drinks that keep the party flowing.

The aft deck is a place where the latest technology driving these yachts is also on display. It provides excellent visibility for docking or sport fishing by providing finger tip joystick control with electric steering and state of the art electronic and engine systems. Docking a Riviera Sports Motor Yacht into even the tightest marina berth is just like reverse parking your car.

True Riviera ease.





Technology-enabled lifestyle and operation

Riviera's enthusiastic adoption of technology to enhance both onboard lifestyle and ease of operation is evident right throughout this flagship, not least in the flybridge and helm areas.

Two outstanding examples: a touch button electric sunroof housed in the flybridge headliner - with heat film tinted glass - opens the space, and the senses, to blue sky and the natural elements.

Next, putting your skipper and crew in single-glance control are cameras to the saloon, bow anchor, cockpit and engine room - with direct feeds to your helm navigation screens, and potential for future electronics' integration.

These are but two examples of Riviera-style technology application. Effortless, easy and considered.

The pure joy of being in command

The priceless feeling of being in charge of an exquisitely crafted piece of machinery, every facet in harmony performing precisely as it should, is now something you can experience offshore, every time you slide behind the wheel of your Sports Motor Yacht.

Look at all that cutting edge, touchscreen technology on the helm dash and at your side ... all of it fingertip control, all designed to harmonise perfectly with everything below in the engine room. Being skipper here is very rewarding and just so easy.

The Sports Motor Yacht collection is shaft-driven with power provided by a choice of highly spirited, famously reliable twin MAN V12 engines. Few cruising experiences compare with the pure joy and thrill of being in command of one of these craft. It is all designed to make you (or your crew) feel you are in total control, skippering a yacht of considerably smaller size.

Seating and steering: Slide into Norsap fully adjustable helm and companion chairs, made for extended time at the helm with folding arm and foot rests, deeply comfortable black upholstery and silver saddle stitching. The hand-bound leather and chrome steering wheel feels, well, perfect to the touch.

The instrumentation: To port, Riviera signature timber cabinetry house vital electronics with circuit breaker protection, an intercom to the galley and engine room. At your side, to starboard, the EIS joystick is at hand, as are Twin Disc Quickshift controls and main helm electronic steering.

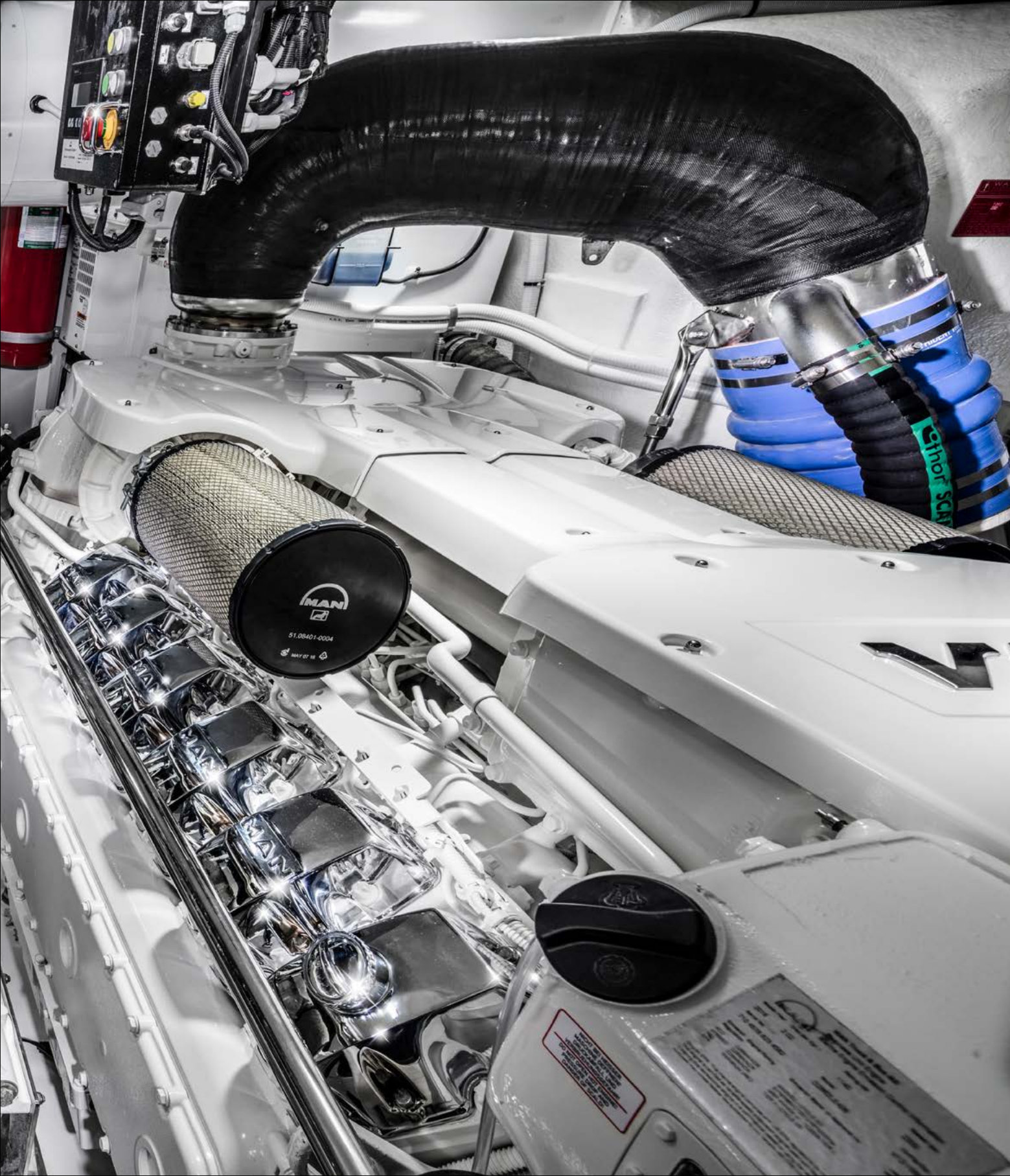
On the dash in front, below the massive curved windscreen with its three wiper system, exactly where you need them, reside the world's most advanced, easiest-to-operate-and read touchscreen navigation, radar and electronic engine controls.

You will note the comprehensive range of factory-fitted, custom electronic packages encompassing everything from radar to underwater lights, to help you personalise your dream long range cruising experience.









Engineering beyond comparison

Which manufacturer of world class engines would drive the long distance yacht of our owners' dreams? From the myriad of decisions we faced during planning and design phases, this was the most crucial.

It was a decision that affected everything: sports performance, comfort, range, every offshore journey - and everyone onboard. It had to be 100% right.

Behind the watertight entry door you'll discover a full stand-up engine room ... an engine room boasting acoustic and thermal insulation, LED lighting, non-slip walkways, a secondary access point for service personnel from the cockpit ... all spotless and gleaming. An engine room worthy of housing legendary twin 1550hp V12 MAN diesel engines coupled to V-drive Seatorque shafts, as standard - the best of the best.

Ultimately, deciding on MAN was an easy decision. Their high tractive power, compact design, impressive fuel economy and unrivalled reliability were all strong recommendation. But something extra, something beyond drove our final decision ... To see it for yourself, look closely at the sophisticated MAN technology and superior design sense you see showcased opposite ...

The Riviera 68 Sports Motor Yacht features aft docking stations with Twin Disc hydraulic thrusters with station-hold among its systems. The 1550hp MAN engines with V-drives and Seatorque shafts - with MAN V12 1800 and 1900 options - deliver unprecedented new levels of smoothness. The low sound levels - just mid-60dba in the bridge at cruise - and lack of vibration, creates a truly first-class experience.

Next generation CZone digital switching interfaces with iPads to offer total and monitoring control. Like all the sophisticated new technology you see incorporated in the engine room - indeed right throughout these craft - it is easy to use and designed to make the lives of everyone onboard, skippers and guests alike, richer and more fulfilling.

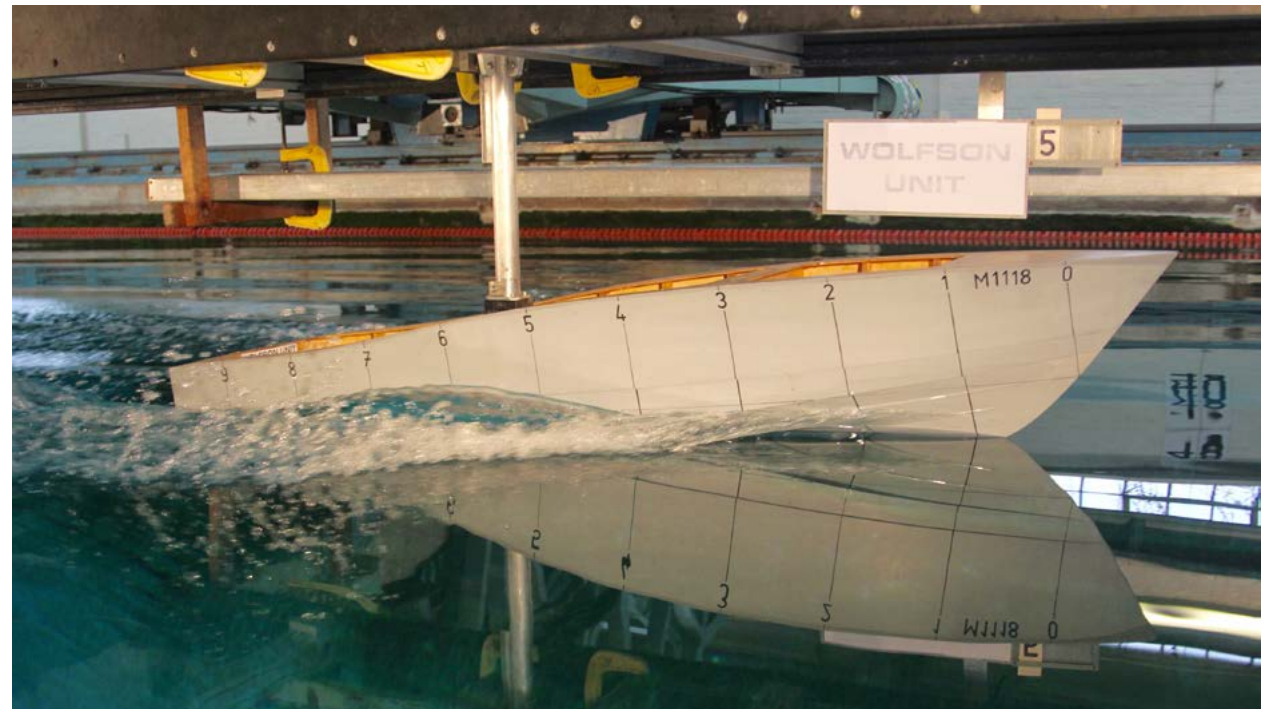
We went beyond so you can too: in complete safety, luxury and confidence.

Engineering excellence

Each model features a full stand-up engine room, while the strong and superior strength hull has been developed by the Riviera design team in collaboration with Frank Mulder Design in the Netherlands – three-time naval architects of the 'Fastest Yacht in the World'.

We have also tank-tested the hull at the Wolfson Unit for Marine Technology and Industrial Aerodynamics at the University of Southampton, England to ensure we have maximised hull efficiency and performance.

Shown here is the tank test model running at a simulated 35 knots.





Electrical excellence

All batteries onboard the Sports Motor Yacht are maintenance-free to ensure carefree boating and are housed in special battery boxes in accordance with American Boating and Yacht Council (ABYC) and the European Union's CE industry standards.

The house power is 24-volt, which allows for simpler charging, lower current draw and smaller cables (further reduced weight) than equivalent 12-volt systems. The Mastervolt inverter provides power to the icemaker, entertainment systems and all outlets onboard.

LED lighting is utilised throughout and provides trouble-free boating while reducing electrical current draw. The lamps use less than 10 per cent of the power required to run a halogen lamp – no bulbs mean no maintenance and long service life. Additionally, Residual Current Device/Ground Fault Circuit Interrupter (RCD/GFCI) provides protection over the entire yacht and also complies with ABYC and CE standards.

Features, inclusions and options

COCKPIT OVERVIEW

Features and inclusions

- Cockpit floor GRP reinforced with alloy plate for future game chair or table fitting (2x)
- Cockpit hatches with heavyduty s/s lock downs and gas struts for lazarette storage and bilge access
- Cockpit side coaming lockers fitted for storage (double moulded)
- Double action manual bilge pump for engine room and lazarette with Y valve
- Engine room access hatch (lockable) with hinge up integrated cockpit sink and ladder to assist entry
- Fish bins (2x) in cockpit floor with pump out facilities
- Hand held shower hot and cold (fresh water)
- Lighting to cockpit includes courtesy (LED) and flood lights
- Rub rail impact and UV resistant PVC (white) with stainless
- Self draining cockpit to the stern
- Steps to side decks port and starboard, illuminated in blue LED light around walk around decks
- Tackle box lockers (GRP)
- Toe kick created by moulded GRP cover boards to cockpit coamings
- Transom door GRP opening outwards (2x) with fold over bridges
- Transom storage unit top loading, drained with glass window, (2x) lockers (port and starboard) in transom
- Triangular quarter glass clears to cockpit port and starboard with additional grab rails (Strataglass no tablings)
- Wet bar with insulated moulded ice box / storage bin inc. freezer plate

24VDC, 2x BBQ recessed under lids with lights over, sink (moulded GRP) with mixer tap forward including lid with gas strut (rear engine room access), storage locker under BBQ's

- Storage tub (top loading) fitted in transom coaming
- Fixed swim platform - GRP (including swim ladder lid and grab rail)

Options

- Extra bow roller over bow to suit reef anchor (manual) or pickup mooring buoy
- Padded bolster fitted to cockpit coaming
- Ice chipper, plumbed to starboard side cockpit fish bin
- Central cockpit fishing package (8x) stainless steel, drained rod holders on mezzanine seat backrest, (4x) stainless steel, drained rod holders on cockpit wetbar, port (2x), starboard (2x), upgrade locker to include tackle box containers to suit bottom shelf of starboard locker
- Electric capstans for cockpit corner fairleads
- Heavy duty stainless steel rod holders in cockpit coaming (4x)
- Crew ladder - powder coated ladder mounted to port or starboard bridge (allows crew access from cockpit to flybridge aft deck)
- Cockpit floor teak-laid
- Live bait tank fitted to transom coaming with pick up / circulating pump, window and lighting
- Transom modification to include moulded rethouse transom to outboard port and starboard (not available with fishing platform)
- Fixed GRP small fishing platform, 400mm (1' 3") with boarding ladder
- Fixed teak-laid swim platform (standard size) includes swim ladder, lid and grab rail

- Hydraulic lift for GRP swim platform or teak-laid option up/down, 550kg (1212lbs) with fixed hob section, including reinforcement of transom (boat trim and performance will be affected)

DECK OVERVIEW

Features and inclusions

- Anchor chain built in seawater wash system, remote to FB main helm
- Anchor chain chafe plate fitted to bow sprit
- Anchor lockers on foredeck, starboard side hatch access anchor chain and storage, port side hatch storage bin
- Anchor s/s 80kg (176lbs) anchor (Ultra), 100m (328ft) of 13mm (1/2") galvanised chain, Ultra swivel and cruise safety strap, safety harness securing eye bolt to foredeck
- Anchor winch vertical with overload protection, suits rope and chain, up and down hand held remote and remote control incorporating chain counter to helm at FB, manual handbrake
- 316 marine grade bow rail welded stainless steel with mid safety wire including flag staff and burgee
- Stainless steel bow roller self-loading through bowsprit, heavy duty stainless steel cleats, 13" (10x), hawse holes (2x) and pop-up fender cleats (2x), fairleads at bow (2x)
- Davit ADC 550kg low profile boom, hydraulic luffing, slewing, electric winch
- Foredeck plug (for use with a tender battery charger)
- Foredeck storage lockers port and starboard side including fender locker
- Wash down high pressure water cleaner with outlets at foredeck and cockpit (fresh water) includes non-marking hose and spray wand



Hydraulic 550kg Davit standard

- Wash down outlet to cockpit and foredeck (fresh water) with quick disconnect
- Wash down outlet to cockpit and foredeck (sea water) with quick disconnect
- Foredeck Fusion black box stereo 12V AM/FM/USB/AUX/iPod/iPhone/MTP/Bluetooth, 4 speakers.
- GRP non-skid Side decks and forward deck

Options

- Teak-laid anchor hatches and footwell at bow
- Lounge upgrade, additional two inboard facing lounges and ice box including removable teak table with table cover
- Forward-facing fold out 2 seater lounge with storage under
- Sun shade to cover lounging area with (5x) removable carbon fibre poles.

MEZZANINE OVERVIEW

Features and inclusions

- Aft lounge with storage under, moulded GRP, concealed lighting, folding teak varnished table, (5x) folding captains chairs
- Bar area outside hopper window, ice maker, swing in style bar stools (2x), solid surface benchtop (Benchtop colour to match galley selection, stool colour to compliment exterior lounge selection)
- Feature one way glass paneling to quarter panels
- Portside folding down TV from overhead
- Built-in rear saloon hinge out doors and opening up window frame in polished stainless steel, (tinted, tempered glass)
- Alfresco mezzanine teak laid in steps from cockpit

Options

- Optional concealed lighting feature overhead
- Optional cockpit mezzanine fold down 32" LED TV, speakers (2x), 2nd zone from saloon Yamaha

GALLEY OVERVIEW

Features and inclusions

- Aft galley arrangement
- Appliances integrated into joinery
- Built in overhead storage lockers with positive locking hardware
- Premium combination oven/microwave with integrated grill
- Premium dishwasher
- Premium grade flooring, vinyl
- Premium 4-element induction cooktop
- Large garbage bin pull out storage with access from utility stairwell with bin shute from galley
- Large pull out pantry starboard side with commercial grade rollers
- Lighting, overhead (LED)
- Pot holder over cooktop s/s removable
- Premium brand rangehood
- Refrigeration - (2x) two drawer fridge, (2x) two drawer fridge/fridge, (1x) two drawer freezer/freezer
- Solid surface benchtop with stainless steel sink by 1¼ and cover (2x), including garbage bin

- Storage cabinets and drawers under and above bench
- Water filter fitted inline to cold water tap
- Optional Zip integrated system with outlet for hot/cold/soda and boiling water at galley faucet
- Galleyware Package includes 40pce cutlery set, 40pce dinner set, (10x) napkins, (3x) kitchen towels, tumblers (12x) medium and (12x) large, (12x) goblets, (12x) champagne flutes, salad bowl and salad servers

Options

- Insinkerator

Please refer to your Riviera representative for the latest inclusions and options



Optional forward deck arrangement

SALOON OVERVIEW

Features and inclusions

- Reverse cycle air-conditioning 48,000BTU (2x) 18,000 BTU and (2x) 6,000 BTU
- Carpet with underlay (forward section)
- Dinette table, folding both ends, (2x) fixed pedestals, sliding manually forward and aft
- L-shaped dinette in premium leather with storage under
- Feature upper pelmets with lighting
- Handrail, stainless steel, recessed into headliner
- Head lining, vinyl with padding
- Overhead LED lighting
- Premium design lounge to portside
- Carry in style with storage under
- Ottoman and coffee table reversible, with magazine storage
- Pantograph side opening door to port for quick and easy access to side deck
- Removable black breezeway cover outside
- Side windows opening tempered, tinted glass, (single sliding window)
- Staircase to flybridge, varnished Walnut treads (nonslip top surface)
- Saloon 50" LED TV, home theatre system and Blu-ray player including amp and sub woofer, 5 concealed speakers in saloon and 2 speakers to cockpit (powered from inverter)
- Electric blinds to port, starboard and forward
- Manual blinds to pantograph door and hopper window

Options

- Curved, tempered glass windscreen with tint and 3M heat film inside and electric blinds

COMPANIONWAY OVERVIEW

Features and inclusions

- Flooring, companionway landing in premium grade vinyl
- Handrail to companionway stairs
- Hatch in companionway floor to forward pump area, ladder down, extra storage
- Large storage cabinet/wine cooler under stairs at entry to master cabin
- Courtesy LED lighting
- Linen cupboard with drawers at bottom

FLYBRIDGE OVERVIEW

Features and inclusions

- Aft flybridge stainless guard rail, midrail and overhead grab rail
- Flybridge aft deck GRP
- Reverse cycle air-conditioning 18,000 BTU (2x) with outlets at helm, windscreen demister and aft flybridge
- Blinds and internal window covers to side windows and windscreen
- Deck hatch to hardtop aft
- Enclosed flybridge 4 sides with separate aft deck area including aft flybridge access door

- Aft docking helm, electric steering, stainless steel wheel including electronic controls, stop/start panel, dual lever engine controls, horn, VHF remote, joystick (1x), dash cover, including fold out seat
- Flooring to internal flybridge sole in high quality commercial grade vinyl
- Grab rails, stainless steel, conveniently located
- Head lining vinyl with padding
- LED lighting overhead, courtesy, red night light and flood lights to cockpit
- L-shape interior lounge upholstered in premium quality leather including fold out double bed (bedding not included)
- Aft-facing lounge on aft deck with Sunbrella, upholstery and folding teak table
- Aft facing bench seat with fold up storage and teak table with covers
- Ottoman to lounge area and coffee table inside on rubber feet
- Polished stainless steel rear flybridge door and window frames, rear sliding door and opening rear window (tinted, tempered glass) to match saloon
- Inbuilt manual pull down blinds in hopper window and doors (2x)
- Refrigerator drawer inside
- Webasto electric sunroof in hardtop including screen and blind, 3M heat film and tinted inside glass
- Wet bar with solid surface bench top, stainless steel underslung sink with mixer tap and drawers for glass storage, icemaker, stainless steel fridge drawer
- Fixed windows with tempered glass, curved front, sides tinted (opening) FW, 3M heat film / clear inside glass
- Windows, side opening tempered, tinted glass, (single sliding window)
- Windscreen wipers (3x) pantograph, heavy duty with intermittent control



Standard forward deck arrangement

settings (includes fresh water washers)

- Flybridge 32" LED TV with AM/FM/CD/DVD/BT player with iPod interface, 6 speakers and Fusion sub-woofer
- Flybridge cameras to saloon, bow anchor, cockpit and Engine room with feed to navigation screens (integration with electronics owners option)

Options

- Rod holders (10x) to aft rail
- Aft flybridge GRP guard rail with integrated space for future safety equipment locker (in lieu of stainless steel aft rail)
- Aft flybridge deck teak-laid
- Sunbrella upholstered sunlounges (2x) with covers
- Fixed GRP L-shaped lounge, fold up lounge bases with storage beneath and teak table, including covers

HELM OVERVIEW

Features and inclusions

- Autopilot with control to main helm (brand to compliment navigation package selection)
- Cameras to saloon, cockpit and engine room with feed provided to flybridge dash for future integration with electronics
- Chain counter (anchor)
- 4.75" compass with light
- Drink holders (2x)
- Electronic engine control unit, twin lever gear and throttle

- Fuel, water and holding tank monitoring to helm with holding tank pump out controls via CZone screen and independent switch
- Norsap helm and companion chairs, fully adjustable (master with electric adjustment) including folding arm and foot rests, upholstered black with silver stitching
- Helm electronics area with 12/24VDC feed, main circuit breaker protected
- Intercom to galley and engine room
- Main helm electronic steering, Twin Disc quickshift controls, EJS joystick
- Wipers (3x), self park, fresh water washdown
- Searchlight on hardtop, remote control at helm
- Luxury leather bound steering wheel
- VHF radio with hailer and remote to aft helm position including 17.6' aerial

ELECTRONICS

- A comprehensive range of factory-fitted electronic packages and custom features are available with everything from radar to underwater lights. Your dealer has full details.

Please refer to your Riviera representative for the latest inclusions and options



MASTER STATEROOM OVERVIEW

Features and inclusions

- Feature bedhead
- Access to private ensuite
- Reverse cycle air-conditioning 18,000 BTU and 6,000 BTU split to ensuite
- Bed side tables (2x) with storage
- Carpet with underlay
- Feature LED lighting
- Cedar-lined hanging locker with auto LED lighting (2x), shoe shelf, full length hanging and shelf
- Port light fixed bonded glass recessed into hull side (2x), with manual roller blinds
- Port side drawer unit with writing bureau featuring timber top with leatherette inlay and concealed mirror lined makeup/case storage, also includes power point with USB outlet for laptop, includes dinette style seating and book storage.
- Portholes (2x) opening round to master cabin head (1x), master cabin (1x) with alarm to helm, s/s and flyscreen
- LED courtesy lighting overhead and for reading
- Safe for valuables fitted to starboard hanging locker under shelf
- Storage area with drawers under king size island berth, including gas assisted lift for the bed to bulk storage
- Master stateroom 40" LED TV, Blu-ray player and home theatre system including 5 speakers and sub woofer

MASTER ENSUITE OVERVIEW

Features and inclusions

- Reverse cycle air-conditioning (split from staterooms)
- Solid surface flooring through heads and shower stall
- LED lighting, overhead and vanity
- Master head with holding tank level indicator and exhaust fan
- Master toilet to incorporate bidet
- Mirror
- Opening portholes with alarm to helm (3x) from heads
- Private entrance door
- Shower stall with glass partition, frameless glass door, automatic sump pump, rain shower head and separate hand-held shower head
- Single length towel rail (2x) DC heated towel rails
- Solid surface benchtops with underslung built in basins
- Storage under and above benchtops
- Soap dispenser to vanity basins, toilet roll holder and accessories
- Vanity cabinet and mirror above sinks

FORWARD VIP GUEST STATEROOM OVERVIEW

Features and inclusions

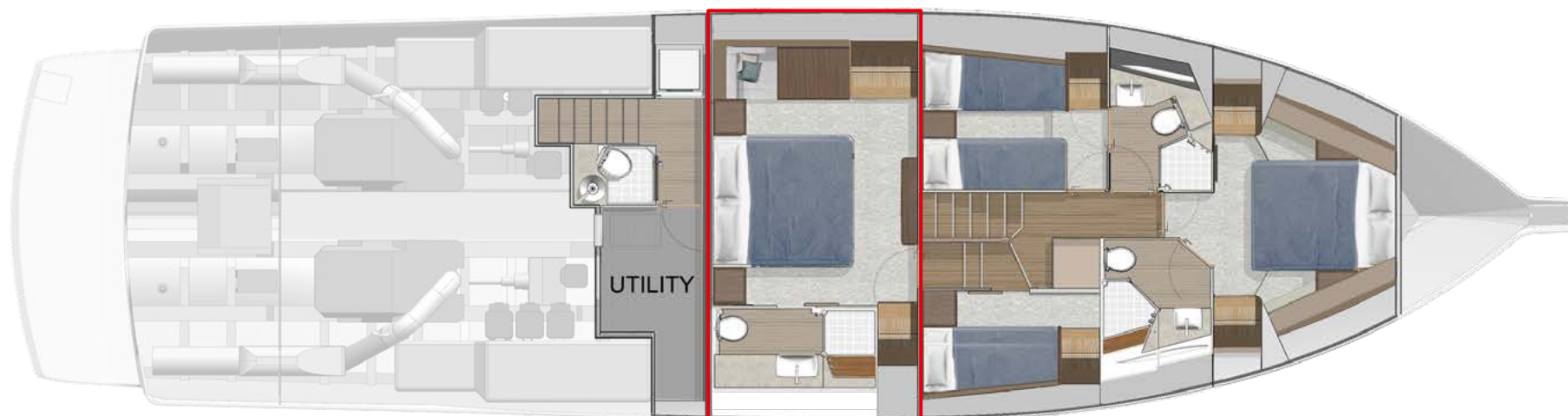
- Access to private ensuite
- Reverse cycle air-conditioning 16,000 BTU split to ensuite
- Carpet with underlay

- Feature bedhead
- Fixed hull windows fitted port and starboard in tinted tempered glass including roller blinds matching saloon selection
- Cedar-lined hanging locker to starboard with auto LED lighting and shelving and cedar-lined storage locker to port
- Hatch with OceanAir flyscreen and block out blind
- Private entrance door
- Queen walk around berth with innerspring mattress, lifts up with gas struts for storage space and drawers underneath
- LED courtesy lighting overhead and for reading
- Storage cabinets outboard with positive locking hardware
- Forward cabin 32" LED TV and 12V AM/FM/CD/DVD/BT player with iPod interface and 2 speakers (TV powered off inverter)

FORWARD VIP GUEST ENSUITE OVERVIEW

Features and inclusions

- Reverse cycle air-conditioning (split from staterooms)
- Solid surface flooring through heads and shower stall
- LED lighting, overhead and vanity
- Master head with holding tank level indicator and exhaust fan
- Master toilet to incorporate bidet
- Mirror
- Opening portholes with alarm to helm (3x) from heads
- Private entrance door



Classic layout

- Shower stall with glass partition, frameless glass door, automatic sump pump, rain shower head and separate hand-held shower head
- Single length towel rail (2x) DC heated towel rails
- Solid surface benchtops with underslung built in basins
- Storage under and above benchtops
- Soap dispenser to vanity basins, toilet roll holder and accessories
- Vanity cabinet and mirror above sinks

PORT GUEST STATEROOM OVERVIEW

Features and inclusions

- Reverse cycle air-conditioning 10,000 BTU
- Bedside table with drawers
- Carpet with underlay
- Cedar-lined hanging locker with auto LED lighting and shoe shelf
- Port light fixed bonded glass recessed into hull side (1x), with manual roller blinds
- Stainless steel porthole (1x) opening with alarm to helm and flyscreen
- Private entrance door
- LED courtesy lighting overhead and for reading
- Side by side berths with electric sliding mechanism to form double bed (foam mattresses) with storage under berths
- Storage cabinets outboard with positive locking hardware
- 3rd cabin 24" LED TV and 12V AM/FM/CD/DVD/BT player with iPod interface and 2 speakers (TV powered off inverter)

PORT GUEST ENSUITE/DAY HEAD OVERVIEW

Features and inclusions

- Reverse cycle air-conditioning (split from staterooms)
- Exhaust fan
- Solid surface flooring through heads and shower stall
- LED lighting, overhead and vanity
- Mirror
- Opening portholes with alarm to helm (3x) from heads
- Private entrance door
- Shower stall with glass partition, frameless glass door, automatic sump pump, rain shower head and separate hand-held shower head
- Single length towel rail (2x)
- Soap dispenser to vanity basins
- Solid surface benchtops with underslung built in basins
- Storage under and above benchtops
- Toilet roll holder and accessories
- Vanity cabinet and mirror above sinks

STARBOARD GUEST STATEROOM OVERVIEW

Features and inclusions

- Reverse cycle air-conditioning 8,000 BTU
- Bedside table with drawers
- Carpet with underlay
- Cedar-lined hanging locker with auto LED lighting and shoe shelf

- Starboard light fixed bonded glass recessed into hull side (1x), with manual roller blinds
- Stainless steel porthole (1x) opening with alarm to helm and flyscreen
- Private entrance door
- LED courtesy lighting overhead and for reading
- Single bunk (2x) with quality mattresses with storage under lower bunk

STARBOARD DAY HEAD OVERVIEW

Features and inclusions

- Reverse cycle air-conditioning (split from staterooms)
- Exhaust fan
- Solid surface flooring through heads and shower stall
- LED lighting, overhead and vanity
- Mirror
- Opening portholes with alarm to helm (3x) from heads
- Private entrance door
- Shower stall with glass partition, frameless glass door, automatic sump pump, rain shower head and separate hand-held shower head
- Single length towel rail (2x)
- Soap dispenser to vanity basins
- Solid surface benchtops with underslung built in basins
- Storage under and above benchtops
- Toilet roll holder and accessories
- Vanity cabinet and mirror above sinks

Please refer to your Riviera representative for the latest inclusions and options



Presidential layout

UTILITY/CREW CABIN OVERVIEW

Features and inclusions

- Access to engine room via utility room watertight entry door
- Additional access to engineering components under stairwell
- Reverse cycle air-conditioning 10,000 BTU
- Courtesy LED lighting to stairwell treads
- Entranceway to utility room/crew head lined with water resistance laminate panelling and gelcoat finish with storage cabinets and access to galley bin and main switch panels
- Exhaust fan in day head
- LED lighting overhead and vanity
- Mirror
- Opening porthole (1x) with alarm to starboard side utility room
- Premium grade vinyl flooring to companionway and stairwell with solid surface flooring to head
- Private entrance door
- Rubber matting to floor in utility storage area
- Single length towel rail in day head
- Solid surface benchtops with underslung built in basin
- Storage under day head benchtop
- Toilet roll holder and accessories
- Washer/dryer cabinet
- Wet crew head showerstall with curtain, automatic shower sump pump, shower head
- Utility room layout

Options

- Convert utility room to crew cabin single bunk with quality foam mattress, storage locker, fitted sheet set, bedspread, pillow cover and porthole
- Convert utility room to crew cabin double bunk with quality foam mattresses, storage locker, fitted sheet sets, bedspreads, pillow covers and porthole

ELECTRICAL OVERVIEW

Features and inclusions

- Alternators (4x) independent start banks (2x) and independent house bank and auxiliary bank
- Maintenance free, lithium ion batteries, independent 24V port and starboard start (total 4x), house (24V/5000W (3x)) batteries, auxiliary 24V 2x, and 12V (12V/120Ahr 1x)
- Battery banks individually isolated
- Battery chargers automatic, 30Amp/24VDC for start and auxiliary, 100A/24VDC for house and 25A 24/12V DC/DC converter for 12V FB battery charge
- Battery paralleling system for emergency engine starting
- Bonding system, to all metallic hull fittings under the water line with zinc anode including galvanic isolator
- CZone - Configuration for iPad connectivity. Includes programming and WiFi interface includes iPad and iPad dock in master cabin
- Digital DC and AC circuit control and protection incorporating 'intelligent' operation with user programmable usage modes, timer circuits, light dimming and circuit bypass
- Digital monitoring system including AC and DC power metering, fluid tank

level monitoring and DC circuit status via colour LCD touchscreen displays, mounted at helm, Saloon and iPad dock to master stateroom

- Engine monitoring including instrumentation, alarms and hour meters
- Generator Onan EQD 27.5kw/50Hz (29kw/60Hz) with muffler, water separation system, fresh watercooling including sound shield, remote stop / start electronic, hour meter
- Generator backup Onan 13.5kw/50Hz (17kw/60Hz) including changeover - can run optional gyro, selected air-conditioning, entertainment, ice maker, battery charger (night time) 24V system to start.
- Inverter 5kw for AC supply to A/V systems, icemaker, lights, winecooler, F/ Water pump and AC outlets
- LED lighting throughout boat where applicable
- Light switches with blue backlighting.
- Navigation lights LED (international standard)
- Underwater lights, Aqualuma Gen 4 series 12 (5x) fitted to transom (blue)
- Wiring coded, numbered and assembled in looms where possible

ENGINEERING OVERVIEW

Features and inclusions

- Acoustic and thermal insulation to engine room
- All through hull fittings on or below the water line fitted with ball valves, all hoses double clamped
- Bilge pumps automatic and manual override (8x) including emergency pumps mounted higher (2x)
- Bow thruster with emergency bilge pump, controls to helm, EJS system, hydraulic bow thruster, connected to Twin Disc Quickshift gearboxes including 2 joysticks (1x) forward helm, port side rear flybridge (1x)



Optional crew cabin

- Emergency rudder locking pins
 - Engine deck hatch (above) insulated & removable in case of major engine work
 - Engine mounts - anti vibration
 - Engine room, lazarette, fwd. bilge, lighting DC / LED
 - External & internal seawater strainers for main water intakes engines, generator (2x) and air conditioning
 - Fibreglass aqualift exhaust system for generator with water separator (2x)
- Engineering Overview - continued
- Fibreglass exhaust system for engines with underwater outlet and bypass above waterline with inline muffler
 - Fire suppression system for engine room with auto/manual controls
 - Fresh water heater (AC) 100litres (26Gal.)
 - Fresh water pump AC, secondary backup pump (switched independently) DC
 - Fresh water system (pressurised) capacity 1,000 litres (264 US gallons)* approx. with gauge in CZone
 - Fresh water tap and hose set in engine room
 - Fuel filters water separator for engines and generator (dual to main engines)

- Fuel lines all swaged
- Fuel shut-off valves
- Fuel tank gauge to CZone
- 68 model fuel tanks, GRP coated in fire retardant white flowcoat. (2x) wing tanks, each approx. 3,500L, total 7,000L (1,849 US gal.) 1.5" balance line with manual valve control for balancing when filling.
- 72 model fuel tanks, GRP coated in fire retardant white flowcoat. (2x) wing tanks, each approx. 3,500L, total 7,000L (1,849 US gal.) 1.5" balance line with manual valve control for balancing when filling.
1x aft tank 2,000L (528gal.) total 9,000L (2,378 US gal.) with transfer pump
- High pressure water cleaner plumbed to outlets at flybridge, bow and cockpit (supplied with 1 x 10metre (32'8") hose and spray wand)
- Holding tank (GRP)capacity 600Litres (158Gallons)
- Lazarette naturally ventilated
- Non slip rubber matting fitted between engines
- Oil change system main engines, gearboxes and generator (2x)
- Polished stainless overhead grab rails to engine room propellers (2x), nibral five blade, CNC processed, dynamically balanced

- Sanitation system with switch at helm for overboard pump out and deck fitting for dockside pump out
- Shafts AQUAMET 22 (2x) Sea Torque oil filled shafts, struts, glands connect to Twin Disc remote mounted Quickshift gearboxes, inc. EJS joystick system, hydraulic bow thruster
- Stainless steel safety rails inbd of each engine
- Steering Hydraulic with electronic steering helm
- Trim Tabs, electric interceptor, with position indicators integrated into controls at helm (auto trim system)
- Venting dorade system for engine air intakes with mist eliminators and fans (CAT A CE)
- Walk in engine room from crew / utility room - second access from cockpit for mechanics, oils and tools
- Water filter (charcoal) to galley tap and icemaker (fitted inline)

Please refer to your Riviera representative for the latest inclusions and options





The Reassurance of owning a Riviera

What sets Riviera and Belize apart as one of the world's great luxury motor yacht builders?

Is it the devotion to quality, standard of materials used, the ocean-tested structural strength, unsurpassed ease of operation, or the stylish, handcrafted luxury finish? Or perhaps it's the famous culture of care that transforms owners into the 'Riviera family'.

The answer is all of the above, and more. Much, much more. Over 38 years and the building of over 5200 luxury motor yachts, the 585-strong Riviera and Belize team have been on a continuous quest of evolution and refinement.

This remarkable heritage of knowledge matched by innovation allows us to marry the best of the time proven with the exciting and new. Witness our introduction of cutting edge touch screen digital technology and joystick maneuverability, which make navigating and operating a Riviera and Belize luxury motor yacht a relaxed and enjoyable experience.

Located on the Gold Coast, Queensland we build on the notable Australian qualities of strength, practicality and love of water in the continent completely surrounded by three oceans and four seas. Then we test our designs in some of the toughest offshore conditions on earth. Hardly surprising that Riviera luxury motor yachts command impressive resale values worldwide.

Today, you can choose from five individual designs that make up our fabulous collection of luxury motor yachts, the Riviera Flybridge, SUV, Sport Yacht or Sports Motor Yacht models, along with our more traditional Belize Collection. All will withstand virtually anything the elements and you can put them through, with poise and ease.

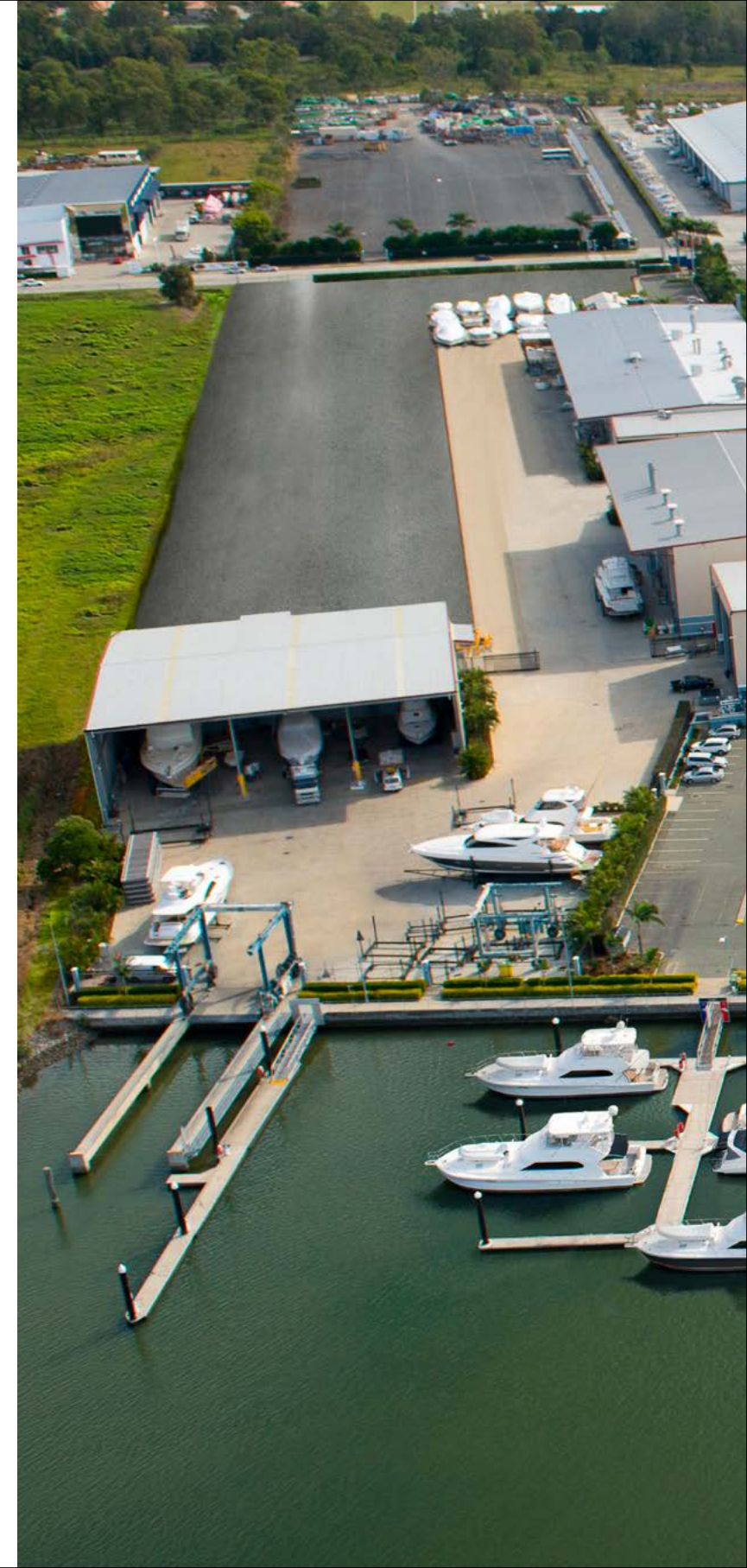
Naturally, we back this confidence with an industry-leading 5-year limited structural warranty. In addition, with all our Volvo Penta powered yachts, we offer a 5-year limited warranty covering helm station controls and multi-function displays, steering and propellers, plus pod drives and engines.

In our experience life is too short for needless compromise. So when it comes time to invest in your next yacht, why settle for a lesser option when you can enjoy all that makes up a Riviera or Belize.



Our 14-hectare, state-of-the-art manufacturing facility on the Gold Coast of Queensland, Australia. This is the largest facility of its kind in the Southern Hemisphere.

Each year, this world-class facility plays host to the educational and fun-filled Riviera Festival of Boating.







Crafted with pride, with you in mind

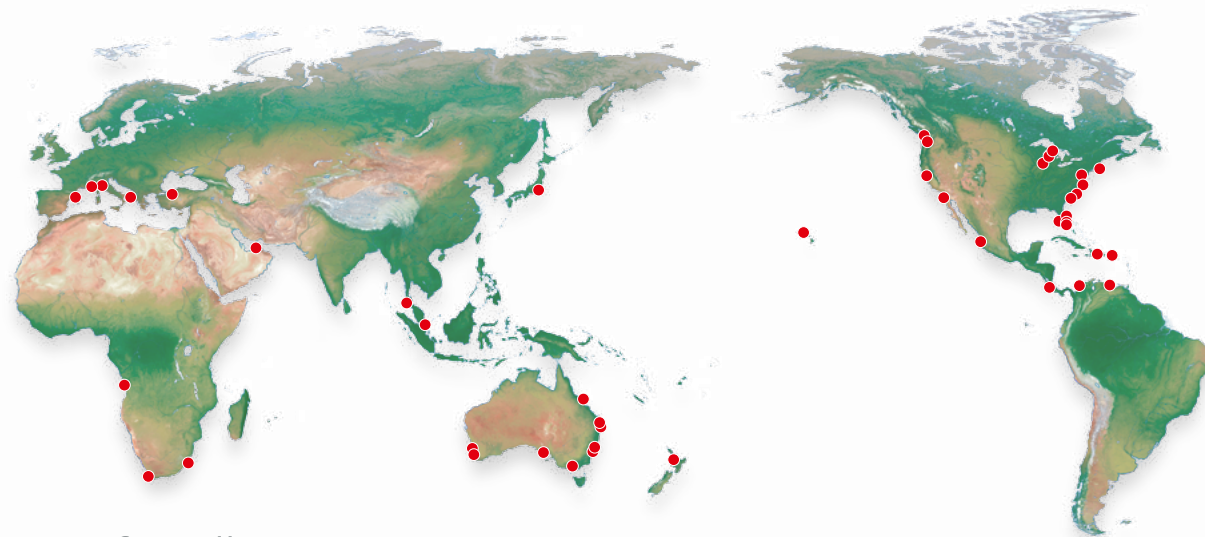
Owner Care at Riviera and Belize is in a class of its own. Premium quality, professional and personal, it is all designed to be of the highest quality, in keeping with the world-class luxury motor yacht we are building specifically for you.

Like thousands of other happy owners, we are confident your every experience of dealing with us and our global dealer team – from selecting your favoured options, electronics and decor, through to routine maintenance and repairs – will be conducted with the upmost respect and care.

Our highly skilled team consult and partner with internationally acclaimed naval architects, designers and engineers to ensure we fully embrace the latest, most exciting industry standards and trends.

Constant communication with the worldwide family of Riviera owners also plays a vital part in helping guide and inform our new model development program.

All this pride in performance ensures Riviera will continue to exceed the evolving needs of discerning luxury motor yacht enthusiasts like you.



A marque of excellence

For nearly four decades the Riviera and Belize team have been preoccupied with the relentless pursuit of excellence. That means never being satisfied with the status quo, rather forever looking to improve and refine our knowledge base by embracing the latest technologies and work practices.

All these endeavours are directed towards creating a superior luxury motor yacht experience for you. They have also garnered us enormous acclaim from the global boating industry along the way.

Over the years Riviera have accumulated a vast collection of local, national and international awards recognising 'world's best practice' across the fields of education and training, employment, innovative manufacturing techniques, export, quality of workmanship and pioneering design.

More than testimony to our passion for handcrafting superior luxury motor yachts, they are your assurance of 'The Ultimate Boating Experience' when you decide to own a Riviera.



Electronics and systems

Electronics play an ever-increasing role in maximising the pleasure and safety of luxury motor yachts, and the choice of equipment that is available today is vast.

Selecting the equipment that meets your needs can be a very challenging task — and Riviera's electronics experts are here to assist.

We source the best systems from around the world, we help match technology to individual requirements and work closely with Riviera's international dealer network to create systems that maximise your boating pleasure.



Riviera Genuine Parts and Accessories

Our passion for quality and practical design is reflected in our exclusive and growing range of clothing, accessories and décor items created to enhance your time afloat.

If you love your Riviera, you'll feel right at home with the Riviera Collection — an extensive range of casual, stylish, comfortable, practical equipment, clothing and accessories.

The Accessory and Décor collection ranges from storm jackets to stylish crockery.

To make your Riviera truly your own, we offer a wide range of fabrics, finishes and colour schemes that enable you to customise your yacht.

Of course our experienced design team is always available to advise and assist you with your individual selection.

RivieraParts.com.au



The Riviera Experience

There's nothing quite like the exhilaration of blue-water cruising in company to remind our valued owners why they are so passionate about the rich and rewarding Riviera luxury life afloat.

For these are the types of passages that build the confidence and skills for people to use their yachts to their full potential, that create the very special memories that last a lifetime, and, importantly, are often the catalyst for long-lasting friendships.

Together, members of our growing global family of Riviera and Belize owners enjoy many special cruising experiences to idyllic destinations around the world — safe in the knowledge that experienced skippers and engineers are always close at hand.

Our global cruising events calendar takes in all states of Australia, New Zealand, the east and west coasts of the United States, the Bahamas, Asia, Europe and the Middle East.

We invite you to join with us for these special experiences — either to stretch your sea legs and gain offshore cruising confidence, or to simply enjoy the company of like-minded people who share an appreciation for the truly unique Riviera life.

Riviera 68 Sports Motor Yacht



Specifications

Length Overall <small>(inc. swim platform and bow sprit)</small>	22.68 m	75'
Hull Length (Lh to ISO8666) *	21.02 m	68' 11"
Beam <small>(inc. gunwale)</small>	6.00 m	19' 8"
Maximum Draft <small>(inc. props)</small>	1.76 m	5' 9"
Dry Weight <small>(approx.)</small> **	45,900 kg	101,200 lbs
Fuel Capacity ***	7,000 L	1,849 US gal
Water Capacity ***	1,000 L	264 US gal
Holding Tank Capacity ***	600 L	159 US gal
Sleeping Capacity	8 persons	
Cockpit Area	12.38 m ²	133.3 ft ²
Mezzanine Deck	10.26 m ²	110.4 ft ²
Total	22.64 m ²	243.7 ft ²
Bridge Clearance	6.43 m	21' 1"
Standard Engine		
MAN V12-1550 x 2	1,140 kW	1,550 hp each
Engine Option		
MAN V12-1800 x 2	1,324 kW	1,800 hp each
MAN V12-1900 x 2	1,397 kW	1,900 hp each

*Specifications may vary on a regional basis.

Specification clarification

* Length of the hull (Lh) to ISO8666: Includes all structural and integral parts (ie. the moulded length of the hull). It excludes parts that can be removed in a non-destructive manner without affecting the structural integrity of the craft, (eg. pulpits, outdrives, driving platforms, rubbing strakes).

** Dry weight represents the estimated minimum weight of a yacht with standard engines and options, no fuel or water on board, no equipment or provisions and no personnel. The stated dry weight may be exceeded.

*** Denotes net tank capacity. For useable capacity do not rely on more than 90% of tank capacity. Actual capacity will vary according to yacht trim and sea state. Speeds are subject to normal weather conditions, fuel and/or water levels, passengers and equipment loads.

Our care for your information

Due to the constant refinement of specifications and design by Riviera Australia, the information in this document may change without notice.

Specifications may vary with time and by region.

Some images in this brochure may include owner selected options or custom details.

Please note that as safety equipment specifications or standards vary by country, this aspect of your purchase will need to be completed by yourself and or your dealer.

Please refer to your Riviera representative for the latest detailed list of inclusions and options prior to purchase.



2015 - 525 SUV



2015 - 77 Enclosed Flybridge



2014 - 6000 Sport Yacht



2014 - 515 SUV



2013 - 565 SUV



2013 - 63 Enclosed Flybridge



2013 - 63 Open Flybridge



2011 - 53 Enclosed Flybridge



2010 - 43 Open Flybridge



2009 - 5000 Sport Yacht



2009 - 70 Enclosed Flybridge



2009 - 5800 Sport Yacht



2009 - 43 Offshore Express



2009 - 3600 Sport Yacht SII



2007 - 4700 Sport Yacht



2007 - 45 Open Flybridge



2007 - 41 Open Flybridge



2006 - 56 Enclosed Flybridge



2005 - M360 Sport Cruiser



2005 - 60 Enclosed Flybridge



2005 - 47 Enclosed Flybridge



2002 - M370 Sport Cruiser



2002 - M290 Sport Cruiser



2002 - 47 Open Flybridge SI



2001 - M430 Sport Cruiser



2001 - 37 Open Flybridge



2000 - 40 Open Flybridge



2000 - M3350 Open Flybridge



1997 - 4000 Offshore Open



1996 - 43 Open Flybridge



1996 - 40 Open Flybridge Aft Cab



1996 - 39 Open Flybridge



1995 - 3300 Open Flybridge



1993 - 48 Enclosed Flybridge SI



1993 - 36 Open Flybridge Twin Cab



1988 - 52 Enclosed Flybridge



1987 - 35 Open Flybridge



1987 - 34 Diavalo



1987 - 33 Open Flybridge



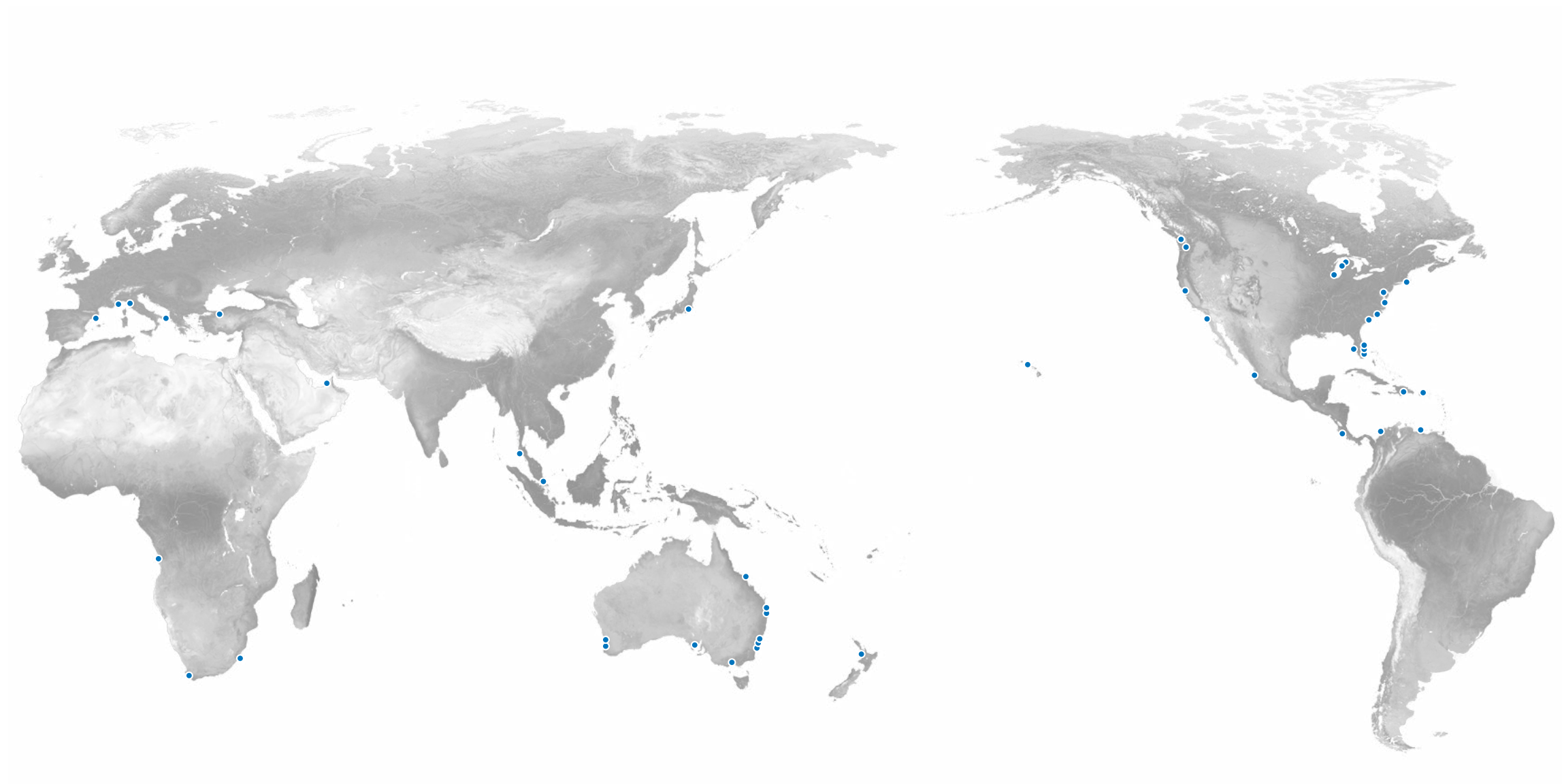
1987 - 27 Open Flybridge



1986 - 38 Open Flybridge MK II



1985 - 52 Open Flybridge



[Click here](#) to find your nearest Riviera and Belize specialist.

RivieraAustralia.com

