



47 SERIES II OPEN FLYBRIDGE | FOR THOSE WITH BIGGER BOATING AMBITIONS



RIVIERA

WHERE STYLE MEETS SUBSTANCE

Every new model in Riviera's long and successful history of building Flybridge Convertibles features refinements and innovations. It's the quiet revolution.

Sleek, dynamic and elegant but never ostentatious, the Riviera 47 is a beautiful expression of our approach to innovation. It is a marriage of form and function.

The running surface of the hull has been designed by one of the world's leading naval architects, Frank Mulder. He has created a hull that delivers performance that can only be described as sensational.

The most notable feature of this hull is two pockets housing the propeller shafts in the aft section, providing a lower shaft angle that helps to deliver superior forward thrust to achieve higher top speeds and increased fuel efficiency.

You won't find any exhaust outlets through the transom. They are located below the waterline at the stern, resulting in a quieter system with greatly reduced exhaust gases.

In typical Riviera fashion, the hull is a hand-laid fiberglass structure with a collision bulkhead forward. Extensive use of lightweight core stiffeners above the waterline has brought about significant weight savings while contributing to superior strength.

You may have owned other boats in the past and no doubt they have given you much pleasure. But there comes a time when you want something truly special, not merely a bigger boat, but a boat that's in a different league.

When you look at design, performance, quality and pedigree, the Riviera 47 is surely that boat.





THE SPACE YOU WANT FOR THE FUN YOU WANT

The cockpit is the play area on any boat and here you've got room to do it in style. There's plenty of storage space too, with lockers for fishing and diving gear, tables, chairs and everything else that makes for great boating pleasure.

Fishing enthusiasts will love the optional live bait well, an integral part of the coaming moulding. There is also a large fishbox, a garbage unit and, for your outdoor dining, the convenience of a eutectic coolbox and sink.

Now consider the easy access to the engine room via the cockpit. Look at the way the swim ladder slides away when not in use, inspect the flush mounted cleats that prevent wear and tear on stern lines. There are dozens of little design features that make life aboard the Riviera-47 so easy, so elegantly functional.

Don't forget there's also a vast unencumbered foredeck if you want to soak up the sun or need a place to store your dinghy.

Many people have commented on the aesthetics of the flybridge, noting that it is very much an integral part of the overall design.

The sense of command and control you will experience as you sit at the helm is magnificent. The sheer size of the bridge, the ergonomics of the helmseat, the layout of the instrumentation and, of course, the uninterrupted 360 degree views, add up to ease, comfort and confidence.

Let's not forget exhilaration, either! Opening the throttle and driving from this commanding position is nothing short of thrilling.

And you don't have to be alone in that experience. Thanks to a large L-shaped lounge forward of the helm, you can share these joys with family and friends.

From the highly polished stainless steel frame down to the lockable hatch, you will be impressed by the design and finish of this first-class flybridge.



THE LUXURY OF SPACE

The lounge may be large and deep, the table generous in size and the number of cabinets impressive, but the sense of space within the saloon is exceptional.

A generous beam contributes to a spacious area, the headroom is head and shoulders above what you are probably used to, and the intelligent location and design of the furniture and fittings creates an easy, open flow. And it is all accentuated by oceans of light from large tinted side windows.

But space isn't the only luxury. Feel the softness of the leather upholstery; run your fingers across the lustrous finish on the fine timberwork; take a look at the quality of the latches on the cabinets: every detail is a testament to Riviera quality – and your good taste.

Created by a leading interior design team, this is an environment in which you, your family and friends can truly relax, indulge and enjoy the best of boating life.

Entertaining is one of the great pleasures of boating. As this is a vessel designed for getting away for days or weeks on end, the galley on the Riviera 47 is both large and extremely well equipped. With a fridge-freezer, convection microwave oven, twin electric burners, optional dishwasher, generous storage space and sizeable bench areas, this is a home away from home when it comes to dining. The quality of the finish and the clever utilisation of space are pleasing – but it is when you close a drawer or place a pan on a bench-top that you realise that style is backed by substance.





A MOST ACCOMMODATING VESSEL

A brief inspection of the accommodation tells you that this is a boat built for an extended vacation. With two staterooms and a third cabin, the Riviera 47 can comfortably accommodate six adults.

The master stateroom is particularly luxurious, well equipped and offers you the comfort of a large double bed with innerspring mattress. There's also the comfort of independently controlled reverse cycle air-conditioning in this and the other stateroom.

The storage - cabinets, drawers, overhead lockers and hanging space - is something rarely seen on a boat this size.

There are two heads on the Riviera 47, one being an ensuite off the master stateroom, the other for guests and day use. Both are generously proportioned so you can move around freely and stretch out as you enjoy that long, hot shower after a day's fishing or swimming. As with everything else aboard the Riviera 47, the fittings and fixtures are all of the highest quality and latest design.

Just because you're out at sea doesn't mean that you have to leave your creature comforts behind.



- 1. Master stateroom.
- 2. Guest stateroom.
- 3. Master stateroom head.
- 4. Guest cabin.



ELECTRONICS

Electronics play an ever-increasing role in the pleasure, performance and safety of luxury boats, and the choice of equipment that is available today is vast. In fact, selecting the equipment that meets your needs can be a very challenging task. R Electronics is here to help: we source the best systems and products from around the world, we are experts at matching technology to individual requirements and work closely with Riviera's design team and Riviera's global Dealer Network to create systems that maximise your pleasure and safety.



BOATS THAT REFLECT A CULTURE OF QUALITY

Riviera is an Australian success story and a major international marketer of luxury pleasure boats. Our growth over more than 25 years has resulted in a company that today produces around 400 such vessels annually. We are also Australia's most awarded pleasure boat manufacturer.

The secret of our success is an absolute commitment to quality. Be it people and work practices, materials, tools and technology, environmental responsibility or after sales service, we are rigorous in pursuing the highest standards.

We employ over 1,300 craftspeople, consult with world-leading naval architects and engineers, and operate a world-class apprenticeship training program. Our employment and training practices have also earned us many local and national awards.

Riviera operate the largest luxury boat building facility in the Southern Hemisphere and boasts some of the most sophisticated technology.

The quality of our service is commensurate with the quality of our boats and is something we are passionate about. The experience of purchasing your Riviera, from the selection of the electronics and interiors to the maintenance, repairs and refits will all be carried out reliably, promptly and smoothly. In fact, you can count on us, and our global Dealer Network, for the life of your boat.

It is this consistent quality that has created Riviera's enormous and ever-growing international appeal.

Today we have dealerships in over 30 countries and, due to our success in the USA, we also have a team and headquarters in Florida.

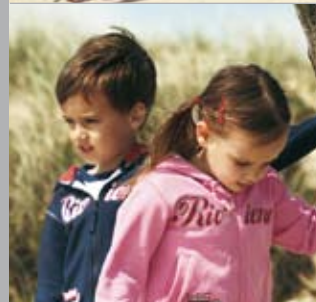
A sensational and growing choice of vessels, an impeccable pedigree, excellent value and outstanding service: now more than ever, Riviera's reputation for quality with integrity inspires confidence in boating enthusiasts the world over.



STYLE

A passion for quality and good design steers everything we do at Riviera – and that is reflected in our exclusive range of clothing, accessories and decor items. If you love your Riviera, you'll feel at home with the Riviera collection: casual yet stylish, comfortable, practical and made to withstand the rigours of boating life. You'll find extensive use of natural fibres, including 100% cotton, quality zippers and first-class workmanship in details such as contrast stitching.

The accessory and decor collection ranges from a watch that can weather the storm to stylish crockery. Riviera has the total leisure and style solution.



INTERIORS

To make your boat truly your own, we offer a wide choice of fabrics, finishes and color schemes that allow you to customise your Riviera. Of course, we also have experienced designers who can advise and assist with your individual selection.

It is a real pleasure to own and use things that are aesthetically pleasing, work well and last – and because it is only appropriate that such qualities are found on board a Riviera, we supervise each individual interior scheme from creation to installation.



French



Français

Riviera 47 Spécifications

Longueur hors tout <small>(plate-forme de bain et davier compris)</small>	16.17 m	53' 1"
Longueur de coque* <small>(ISO 8666)</small>	15.19 m	49' 10"
Bau <small>(plat-bord compris)</small>	4.89 m	16' 1"
Tirant d'eau maximum <small>(épontilles comprises)</small>	1.35 m	4' 5"
Poids à sec** <small>(peut varier selon moteurs et options)</small>	19,600 kgs	43,200 lbs
Capacité réservoirs carburant***	2,700 ltr	712 US gal.
Capacité réservoirs eau***	620 ltr	164 US gal.
Capacité du réservoir***	151 ltr	40 US gal.
Couchage	6-8 personnes	
Moteur standard x 2 Cummins	492 kW chacun	660 hp chacun
<small>Veillez prendre connaissance de la Garantie, des Clarifications relatives aux spécifications et des Avertissements du Groupe Riviera figurant dans cette brochure.</small>		

Plus d'espace, plus de luxe: le Flybridge Convertible Riviera 47 vous en donne plus encore.

Si vous êtes décidé à choisir un bateau plus spacieux, vous allez découvrir que le Riviera 47 excelle non seulement en terme d'espace, mais également pour l'intelligence de sa conception et la qualité de sa performance.

Créé par le constructeur de yachts le plus primé d'Australie dans les établissements de construction navale de plaisance les plus vastes et les plus sophistiqués de l'hémisphère Sud, le Flybridge Convertible Riviera 57 est un bateau hors pair.

Avec ses deux cabines de luxe, sa troisième cabine et ses deux salles de bains spacieuses, il peut accueillir confortablement six adultes pour une longue croisière. Le confort est prépondérant.

Doté d'une généreuse hauteur libre, d'un mobilier élégant et de grandes fenêtres, le salon est l'endroit idéal pour se détendre et recevoir ses amis. Du salon, il suffit de descendre une marche pour arriver à la cuisine, plus vaste que la plupart et magnifiquement aménagée.

Les joies conviviales du plein air n'ont pas été négligées. Le cockpit est gigantesque ; vivre à appâts et grande plate-forme équipée d'une échelle de bain escamotable, rien n'y manque.

Le flybridge lui aussi est très spacieux – et l'ergonomie du poste de barre, les instruments à la pointe de la technologie et une vue à 360 degrés vous garantissent la position la plus confortable et la plus sûre.

Vous ne manquez pas d'apprécier également la conception et la qualité de l'accastillage: robinetterie Grohe, plans de travail en grancoat, cuir d'ameublement moelleux, boiseries en tek au fini miroir... en bref, le luxe de la proue à la poupe.

Quant aux performances, les options moteur permettent d'atteindre des vitesses grisantes et la coque résistante en fibre de verre, aux lignes pures et hydrodynamiques, offre une stabilité et une agilité remarquables, même par mer forte.

Pour une qualité hors pair et un exceptionnel rapport qualité-prix, le Riviera 47 vous en donne plus encore.

German



Deutsch

Riviera 47 Technische Daten

Gesamtlänge <small>(einschlieBlich Schwimmplattform Et Bugrolle)</small>	16.17 m	53' 1"
Länge des Schiffskörpers <small>(im Einklang mit ISO8666*)</small>	15.19 m	49' 10"
Balken <small>(einschlieBlich Dollbord)</small>	4.89 m	16' 1"
Maximaler Tiefgang <small>(einschlieBlich Propeller)</small>	1.35 m	4' 5"
Trockengewicht** <small>(ungefähres Gewicht, abhängig von Motoren und Optionen)</small>	19,600 kgs	43,200 lbs
Treibstoff Kapazität***	2,700 ltr	712 US gal.
Wasser Kapazität***	620 ltr	164 US gal.
Kapazität des Vorratstanks***	151 ltr	40 US gal.
Schlaf Kapazität	6-8 personen	
Standard Motor x 2 Cummins	jeweils 492 kW	jeweils 660 hp
<small>Bitte lesen Sie auch die Garantie der Riviera Gruppe. Erläuterungen zu den Technischen Daten und Warnungen finden Sie in dieser Broschüre.</small>		

Mehr Raum, mehr Luxus: die Riviera 47 Flybridge Convertible bietet einfach mehr.

Wenn Sie auf ein geräumigeres Boot umsteigen möchten, werden Sie feststellen, dass die Riviera 47 nicht nur in ihrem Platzangebot herausragt, sondern auch in ihrem intelligentem Design und ihrer überlegenen Leistung.

Dieses von Australiens höchst ausgezeichnetem Bootsbauer in der größten, fortschrittlichsten Bootsbauanlage der südlichen Hemisphäre geschaffene Boot ist eine Klasse für sich.

Mit zwei Luxuskabinen, einer dritten Kabine und zwei geräumigen Badezimmern bietet dieses Boot auch auf Langstreckenreisen sechs Erwachsenen bequem Platz. Und die Betonung liegt auf Komfort.

Mit großzügiger Deckenhöhe, eleganter Innenausstattung und großen Fenstern schafft der Salon eine herrliche Umgebung für Entspannung und Unterhaltung. Auch die Bordküche ist größer als die meisten, hervorragend ausgestattet und nur einen Schritt vom Salon entfernt.

An Deck lässt es sich ebenfalls gut sein. Das Cockpit ist enorm und mit allem Denkbaren ausgestattet, von einem Behälter für Lebendköder bis hin zu einer großen Plattform mit einer Trittleiter, die sich bequem wegschieben lässt, wenn Sie sie nicht brauchen.

Sogar die Flybridge ist sehr geräumig – und die ergonomische Auslegung der Ruderposition, ihre hochmodernen Instrumente und der 360-Grad-Blick rings um Sie herum schaffen für Sie die erdenklich bequemste, sicherste Position.

Sie werden sicherlich auch das Design und die Qualität der Innenausstattung zu schätzen wissen: Grohe-Armaturen, Grancoat-Arbeitsflächen, weiche Lederbezüge und Teakholz mit spiegelglatter Oberfläche... purer Luxus vom Bug zum Heck.

Was die Leistung angeht, bieten die Motorisierungsoptionen berauschende Geschwindigkeiten bei - dank des soliden Glasfaserrumpfes und des eleganten, hydrodynamischen Designs - bemerkenswerter Stabilität und Agilität auch auf rauer See.

Wenn es Ihnen um herausragende Qualität und außergewöhnlichen Wert geht, hat die Riviera 47 unendlich viel zu bieten.

Spanish



Español

Riviera 47 Especificaciones

Largo Total <small>(incl. plataforma de natación y rodillo de proa)</small>	16.17 m	53' 1"
LC de acuerdo <small>(a ISO 8666*)</small>	15.19 m	49' 10"
Manga <small>(incl. borda)</small>	4.89 m	16' 1"
Calado máximo <small>(incl. props)</small>	1.35 m	4' 5"
Peso en seco** <small>(aprox. depende de motores y opciones)</small>	19,600 kgs	43,200 lbs
Capacidad de combustible***	2,700 ltr	712 US gal.
Capacidad de agua***	620 ltr	164 US gal.
Capacidad del tanque de almacenamiento***	151 ltr	40 US gal.
Capacidad para dormir	6-8 personas	
Motor estándar x 2 Cummins	492 kW cada uno	660 hp cada uno
<small>Se le ruega prestar atención a la garantía del Grupo Riviera, aclaración de las especificaciones y advertencias contenidas en este folleto.</small>		

Más espacio, más lujo: hay tanto más en el Riviera 47 Flybridge Convertible.

Si está listo para cambiar a una embarcación más espaciosa, encontrará que al Riviera 47 no solamente le sobra espacio, sino también inteligencia en diseño y desempeño superior.

Creado por el más galardonado armador de embarcaciones de placer de Australia, y construido en el astillero de yates más grande y sofisticado del hemisferio sur, esta embarcación constituye una clase aparte.

Con dos camarotes, una tercera cabina y dos amplios baños, puede cómodamente alojar a seis adultos en un viaje de larga distancia, donde se hace énfasis en la comodidad.

De generosa altura, elegante mobiliario y grandes ventanales, el salón es un ambiente placentero donde descansar e invitar. La cocina es también más grande que la mayoría, estupendamente equipada y ubicada a sólo un escalón por debajo del salón.

La recreación al exterior es también un deleite. El puente de mando es enorme y tiene de todo: desde una cavidad para carnada viva a una gran plataforma con escala para nadar, que se desliza a un lado cuando no se utiliza.

Hasta el puente superior es muy espacioso – y la ergometría del sector del timón, con instrumentación de vanguardia y vistas de 360 grados lo sitúan a usted en la más cómoda y confiable de las posiciones.

Apreciará también el diseño y calidad de los accesorios: implementos marca Grohe, mesadas grancoat, tapizados de suave cuero y maderas de teca con terminación espejada... esto es lujo de proa a popa.

En cuanto al desempeño, las opciones de motor ofrecen increíbles velocidades y, gracias al casco de sólida fibra de vidrio y pulcro diseño hidrodinámico, notable estabilidad y agilidad, aún en mares turbulentos.

Para sobresaliente calidad y valor excepcional, hay tanto más en el Riviera 47.

Italian



Italiano

Riviera 47 Caratteristiche Tecniche

Lunghezza complessiva <small>(compresa piattaforma balneazione Et rullo di prua)</small>	16.17 m	53' 1"
Lunghezza scafo* <small>(secondo ISO 8666)</small>	15.19 m	49' 10"
Larghezza massima <small>(compresa frisata)</small>	4.89 m	16' 1"
Pescaggio massimo <small>(comprese eliche)</small>	1.35 m	4' 5"
Peso a secco** <small>(circa, dipende da motori e optional)</small>	19,600 kgs	43,200 lbs
Capacità carburante***	2,700 ltr	712 US gal.
Capacità acqua***	620 ltr	164 US gal.
Capacità del serbatoio acque nere***	151 ltr	40 US gal.
Capienza reparto notte	6-8 persone	
Motore standard x 2 Cummins	492 kW cad	660 hp cad
<small>Si rimanda il lettore ai Chiarimenti relativi alle caratteristiche tecniche del Gruppo Riviera e alle Avvertenze contenute nel presente opuscolo.</small>		

Più spazio, più lusso: c'è sempre qualcosa in più nel Riviera 47 Flybridge Convertible.

Se siete pronti a fare il salto di qualità sotto forma di una imbarcazione più spaziosa, troverete che il Riviera 47 rappresenta il non plus ultra non solo in termini di spazio, ma anche dal punto di vista dell'intelligenza del design e delle prestazioni superiori.

Creato dal più premiato costruttore di imbarcazioni di lusso dell'Australia e realizzato presso i cantieri per natanti da diporto più tecnologicamente avanzati dell'emisfero australe, questa imbarcazione non ha rivali nella propria categoria di appartenenza.

Grazie a due camere da letto, una terza cabina e due spaziosi bagni, il natante può comodamente alloggiare sei adulti anche le traversate più lunghe con un deciso accento sulla comodità.

Con l'alto soffitto, gli eleganti arredamenti e le ampie finestre, il salone rappresenta un ambiente piacevole in cui rilassarsi e intrattenere gli ospiti. Anche la cambusa è di dimensioni superiori al normale, ha in dotazione accessori di superba qualità e si trova un solo scalino più in basso rispetto al salone.

Le strutture di intrattenimento all'aperto sono anch'esse un vero piacere. Il pozzetto è enorme ed è dotato di tutta una serie di infrastrutture, compresi un contenitore per esca viva ed una grande piattaforma con una scaletta per la balneazione che rientra quando non viene usata.

Anche il ponte di comando abbonda di spazio – e le caratteristiche ergonomiche del posto di comando, la strumentazione all'avanguardia e le magnifiche vedute panoramiche a 360 gradi vi faranno sentire comodi e sicuri mentre siete al timone.

Apprezzerete anche il design e la qualità degli accessori: elettrodomestici Grohe, banchi di cucina in materiali moderni, tappezzeria in pelle morbida e rifiniture in legno tek finemente lucidato... in altre parole, lusso da prua a poppa.

Per quanto riguarda le prestazioni, il motore consente di raggiungere velocità incredibili, grazie al solido scafo in fibra di vetro e al design elegante e idrodinamico, il natante garantisce incredibile stabilità e agilità anche nelle acque più mosse.

Straordinaria qualità ed eccezionale valore: gli elementi alla base dei molteplici pregi del Riviera 47.

Riviera 47 Specifications

Length Overall <small>(inc. swim platform & bow roller)</small>	16.17 metres	53' 1"
Lh to ISO8666*	15.19 metres	49' 10"
Beam <small>(inc. gunwale)</small>	4.89 metres	16' 1"
Maximum Draft <small>(inc. props)</small>	1.35 metres	4' 5"
Dry Weight** <small>(approx., depends on engines & options)</small>	19,600 kgs	43,200 lbs
Fuel Capacity***	2,700 litres	712 US gal.
Water Capacity***	620 litres	164 US gal.
Holding Tank Capacity***	151 litres	40 US gal.
Sleeping Capacity	6-8 persons	
Standard Engine x 2 Cummins	492 kW each	660 hp each

The Riviera Group Warranty

Riviera Marine (INT) Pty Limited warrants to the first retail purchaser during the periods herein that it will, subject to the terms and conditions in the full Riviera Group Warranty, replace or repair, at its option, defects caused by faulty workmanship or materials under normal use and service during the first twelve (12) months and (5) years for hull structure. Please refer to your Riviera Owner's Manual and your Riviera Dealer for full details of the comprehensive Warranty.

Due to The Riviera Group's commitment to continually improve our products, we reserve the right to modify or change, without notice, any materials, specifications, equipment and/or accessories. All measurements quoted are approximate and pictures displayed are indicative only.

Riviera Marine (INT) Pty Limited is the owner of the copyright material (including the photographic material) contained in this brochure and any reproduction of any part thereof without the express license of Riviera Marine (INT) Pty Limited may infringe this right.

The Riviera Group Clarification of Specification

* Length of the hull (Lh) to ISO8666: Includes all structural and integral parts. (ie. the moulded length of the hull). It excludes parts that can be removed in a non-destructive manner-without-affecting the structural integrity of the craft, eg. pulpits, outdrives, diving platforms, rubbing strakes.

** Dry weight represents the estimated minimum weight of a boat with standard engines and options, no fuel or water on board, no equipment or provisions and no personnel. The stated dry weight may be exceeded.

*** Denotes nett tank capacity. For usable capacity do not rely on more than 90% of tank capacity. Actual usable capacity will vary according to boat trim and sea state.

Speeds are subject to normal weather conditions, fuel and or water levels, passengers and equipment loads.

Refer to your Riviera Owner's Manual and your Dealer for height to hardtop and maximum height details.

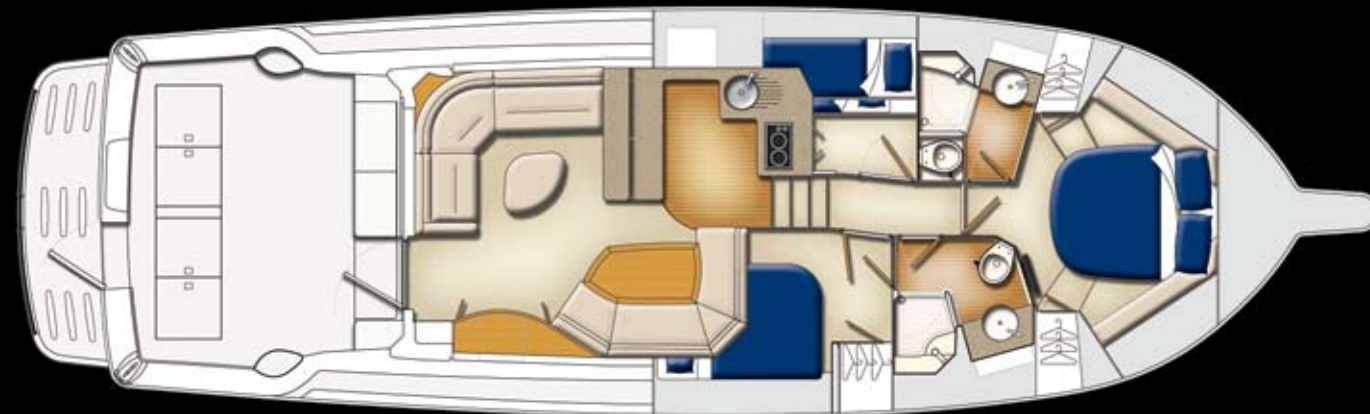
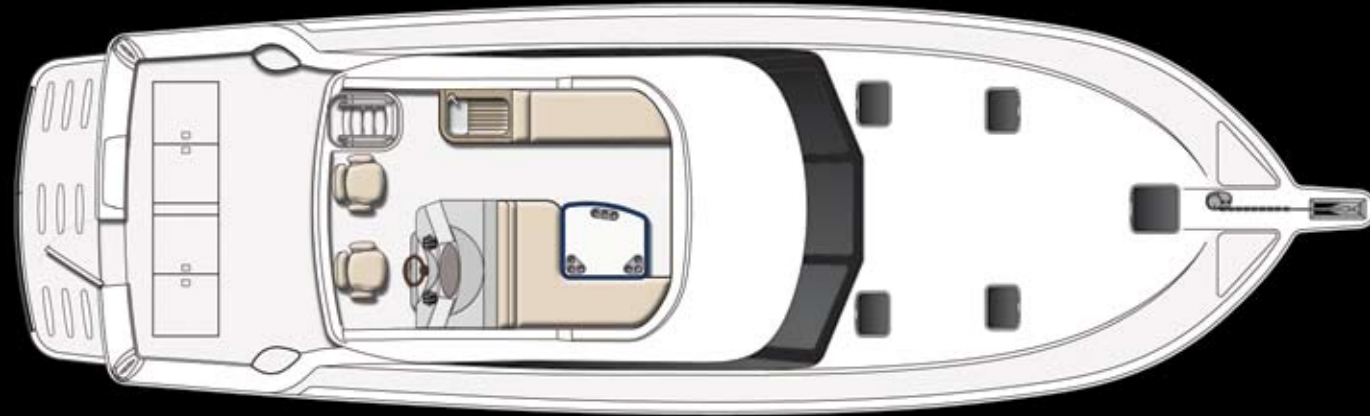
The specifications in this document are not complete or definitive and are subject to change without notice and therefore may not be current. Riviera Marine (INT) Pty Ltd will not be liable (in contract, tort or otherwise) for any loss resulting from the inaccuracy of any information contained in this document.

Specifications may vary on a regional basis. Some images in this brochure may included non-standard or after market options.

Warnings

The Riviera Group is committed to building the best luxury cruisers, tailored to suit specific countries and their individual compliance laws and regulations. Riviera equipment and build specifications approved for one country may not be compliant with another country's safety and equipment regulations and as such those cruisers may have no recourse to The Riviera Group's extensive manufacturer's warranties.

Each Country and State has different safety equipment standards. It is important that you ensure the requirements in your jurisdiction are met prior to the vessel being used.



RIVIERA

www.riviera.com.au