



PRESTIGE ACCELERATES INTO 2012

OUR VISION OF THE PRESTIGE OF TOMORROW

WE ARE DEVELOPING OUR PRODUCT OFFER ACROSS THREE PRESTIGE MODEL LINES, WITH THE GOAL OF BECOMING KEY PLAYERS IN EACH OF THESE MARKET SEGMENTS.

WE ARE PURSUING TWO PRINCIPAL OBJECTIVES FOR 2012, ACCELERATING OUR GLOBAL MARKETING DEVELOPMENT STRATEGY AND SQUARELY POSITIONING PRESTIGE IN THE WORLD OF LUXURY GOODS.

THE TWO DESIGNS FOR THE PRESTIGE 500, LAUNCHED IN DECEMBER OF 2010 IN PARIS, AND IN JANUARY OF 2011 IN DÜSSELDORF, HAVE BEEN VERY WELL RECEIVED. AS A RESULT, WE HAVE DECIDED TO CONTINUE OUR RAPID DEVELOPMENT OF NEW MODELS ALONG THESE LINES, INCORPORATING THOSE CONCEPTS THAT HAVE PROVEN MOST POPULAR.

THE NEW PRESTIGE 550 S AND 550 F ARE NOW JOINING THE PRESTIGE RANGE, AND AS WE CONTINUE TO DEVELOP LARGER MODELS, WE ARE PLEASED TO ANNOUNCE THE LONG-AWAITED ARRIVAL OF THE PRESTIGE 60 SPORT TOP.

OUR VISION IS TO OFFER INCREASINGLY LARGER NEW MODELS, EXCEPTIONAL MOTOR YACHTS THAT ARE IN KEEPING WITH PRESTIGE VALUES: WITH A CLEAN, CONTEMPORARY DESIGN CONCEPT, SEAWORTHY QUALITIES, AN ELEGANT, REFINED STYLE AND SPACIOUS LIVING AREAS.

3 PRODUCT LINES

FLYBRIDGE LINE 40 TO 60'



EXPRESS LINE 40 TO 60'



YACHTS DIVISION 60' + ...



PRESTIGE®

LUXURY MOTOR YACHTS

HIGHLIGHTS OF 2011

THE SUCCESS OF PRESTIGE 500S & 500 FLY



THE SUCCESS OF PRESTIGE 60



WE WITNESSED RAPID INTERNATIONAL EXPANSION AND AN EXCELLENT RECEPTION OF THE PRESTIGE BRAND ACROSS NEW MARKETS IN NORTH AMERICA AND ASIA.



PRESTIGE 60 LAUNCHING IN ASIA



**PRESTIGE 60 AWARDED
IN SHANGHAI**



PRESTIGE 500S AT THE MIAMI BOATSHOW

FOCUS ON TWO BRIGHT NEW MODELS OF
THE 2010/2011 SEASON





THE NEW PRESTIGE 500 S IS PERFECTLY ALIGNED WITH THE PRESTIGE PHILOSOPHY: CLEAN DESIGN; GOOD SEAKEEPING QUALITIES; SIMPLE, ELEGANT STYLE; SPACIOUS LIVING AREAS.

IN ADDITION, THE INNOVATIVE LAYOUT OF THE PRESTIGE 500 S FEATURES A NEW DESIGN CONCEPT: THAT OF AN "OWNER'S SUITE" ON A MODEL UNDER 50 FEET IN LENGTH.

ALREADY UNIQUE IN ITS MARKET, THE PRESTIGE 500 S OFFERS ALL THE COMFORT OF A MUCH LARGER MOTOR YACHT.

THE PRESTIGE 500 S IS A LARGE COUPÉ, CHARACTERISED BY A COMFORTABLE INTERIOR SALOON WITH A LARGE, OPENING ROOF AND A SLIDING PANEL AFT THAT LEADS TO THE COCKPIT LOUNGE ON THE SAME LEVEL (WITH TENDER GARAGE).

THE COUPÉ CONCEPT IS WELL SUITED FOR CRUISING AND RELAXING DURING THE SAILING SEASON (AS OPPOSED TO THE OPEN SPORT TOP, WHICH IS DESIGNED PRIMARILY FOR DAY-BOATING).

THE POWERFUL HULL IS DESIGNED FOR THE BEST SPEED/FUEL EFFICIENCY RATIO AND FIRST-RATE SEA KEEPING. FOR MAXIMUM FUEL EFFICIENCY, IT FEATURES A VOLVO ENGINE WITH IPS 2 TRANSMISSION. FOR EXCELLENT PERFORMANCE WHILE UNDER WAY, THE WIDE, TAPERED V-SHAPED HULL ENSURES DESIRED CRUISING SPEEDS, STABILITY AND COMFORT ON BOARD.

THE STYLE OF THE PRESTIGE 500 S IS CLEAN AND CONTEMPORARY, WITHOUT EXCESS, SIMPLE ELEGANCE. THE HIGH, POWERFUL HULL, WITH ITS CHARACTERISTIC WINDOWS, IS INSTANTLY RECOGNIZABLE. THE NEW CONTOUR, WITH LARGE GLASS PANELS AND A SLEEK SPORT TOP, IS DISTINGUISHED BY ORIGINAL FEATURES LIKE THE RIDGE ON THE SPORT TOP, THE FORMS OF THE SIDE WINDOWS AND WINDSCREEN. THE SIZE OF THE SPORT TOP, EXTENDING OVER HALF THE LENGTH OF THE COCKPIT, AND THE CONTEMPORARY STYLE OF THE COCKPIT LOUNGE, COMPLEMENT THE PERFECTLY BALANCED LIVING SPACE. THE NATURAL, TIMELESS ELEGANCE OF THE PRESTIGE 500 S MAKES IT A STAND OUT IN THE HIGHLY COMPETITIVE WORLD OF YACHT DESIGN.

LIFE ONBOARD THE PRESTIGE 500 S IS EASY, WITH A FLOOR PLAN DESIGNED FOR "LIVING ON ONE LEVEL."

THE SPACIOUS U-SHAPED SALOON FEATURES LARGE WRAP-AROUND WINDOWS FOR PANORAMIC VIEWS AND NATURAL LIGHT (STYLED AFTER THE PRESTIGE 60). SLIDING GLASS PANELS AND A LARGE OPENING ROOF ALLOW FOR MAXIMUM ENJOYMENT OF THE SETTING.

THE AFT GALLEY (ONE STEP DOWN) IS WELL INTEGRATED INTO THE OVERALL FLOOR PLAN, LOCATED BETWEEN THE TWO PRINCIPAL LIVING AREAS, THE SALOON AND THE COCKPIT.





THE OWNER'S SUITE, A CABIN WITH PRIVATE HEAD AND SHOWER COMPARTMENT, IS NOTABLE FOR ITS PRIVATE ACCESS FROM THE SALOON AND SPACIOUS LAYOUT. WIDE WINDOWS IN THE HULL, TOGETHER WITH THE STYLISH INTERIOR DÉCOR AND AMENITIES, MAKE IT AN ESPECIALLY COMFORTABLE LIVING SPACE.

THE LARGE GUEST CABIN IS DISTINGUISHED BY ITS DOUBLE BERTH, WHICH CAN BE CONVERTED INTO TWO SINGLE BERTHS, AND BY ITS PRIVATE HEAD COMPARTMENT, ALSO ACCESSIBLE FROM THE SALOON.

THE THIRD CABIN HAS TWO SINGLE BERTHS THAT CAN BE CONVERTED INTO ONE DOUBLE BERTH, MUCH MORE COMFORTABLE THAN THE BUNKS GENERALLY OFFERED IN A THIRD CABIN.

ON DECK, THE COCKPIT LOUNGE IS A TRUE EXTERIOR LIVING AREA. ADJOINING AND OPEN TO THE INTERIOR SALOON AND GALLEY THROUGH THE SLIDING DOOR WHEN FULLY RETRACTED (4-PANEL DOOR), THE LOUNGE BECOMES A NATURAL EXTENSION. OPEN TO THE SKY, IT CAN ALSO BE COMPLETELY SHELTERED BY A FURLING SUN AWNING. THE FORWARD SUNDECK ALSO FEATURES A RETRACTABLE SUN AWNING AND ADJUSTABLE BACKRESTS FOR READING.



PRESTIGE[®]

LUXURY MOTOR YACHTS

PRESTIGE 500



THE CONCEPT FOR THE NEW SIGNATURE PRESTIGE IS BASED ON TWO KEY PRINCIPLES: PERFECT HARMONY IN DESIGN AND THE ASSURANCE OF POWER AND SAFETY.

OPTIMAL COMFORT

THE DECK PLAN IS DESIGNED TO FACILITATE LIFE ONBOARD, WITH WIDE SIDEDECKS, A FORWARD SUNDECK SHELTERED BY A SUN AWNING, AND THE SPACIOUS COCKPIT OPENING ONTO THE AFT SWIM PLATFORM AND HYDRAULIC GANGWAY.

LOCATED NEAR THE GALLEY AND SHELTERED BY THE LARGE FLYBRIDGE, THE SPACIOUS COCKPIT FEATURES A DIRECT ACCESS TO THE GENEROUS AFT CABIN, FLOODED WITH NATURAL LIGHT AND BOASTING ITS OWN PRIVATE HEAD AND SHOWER COMPARTMENT.

THE FLYBRIDGE OF THE PRESTIGE 500 IS A POINT OF PRIDE, GENEROUSLY SIZED FOR A 50-FOOT MOTOR YACHT.

ACCESSED BY AN OPEN STAIRCASE, THE EXTRA-LARGE FLYBRIDGE FEATURES ALL THE LUXURY OF A LARGE MOTOR YACHT: A SPACIOUS FORWARD SUNDECK, A HELM STATION WITH SEATING FOR TWO, A GALLEY AND A LARGE TABLE.

INTERIOR SPACE REINVENTED

THE GARRONI DESIGN TEAM REVOLUTIONIZES LIFE ONBOARD WITH A DESIGN CONCEPT TO FULLY BENEFIT FROM LIFE AT SEA.

THE PRESTIGE 500 OFFERS A LIVING SPACE ENTIRELY ON ONE LEVEL. IN SEAMLESS COMMUNICATION WITH THE COCKPIT AND THE SALOON, A SPACIOUS GALLEY IS IDEALLY SITUATED FOR EASY ACCESS TO THE INTERIOR AND THE EXTERIOR. NO LONGER SEPARATED FROM THE LIVING AREA, THE OPEN GALLEY IS DISCRETELY INTEGRATED AND CENTRALLY LOCATED, A DETAIL THAT CHEFS WILL APPRECIATE!

THE LUXURIOUS OWNER'S SUITE, WITH PRIVATE ACCESS AND AN ADJOINING HEAD AND SHOWER COMPARTMENT, IS LOCATED MID-SHIP, WHERE SPACE IS MAXIMIZED AND NATURAL LIGHT FLOODS IN THROUGH LARGE WINDOWS IN THE HULL.

THE PERFECT COMBINATION: A PRESTIGE HULL AND VOLVO IPS

A FORERUNNER IN THE FIELD OF POD PROPULSION, PRESTIGE HAS ALREADY ACCUMULATED MORE EXPERIENCE THAN THE COMPETITION AND HAS DESIGNED A SPECIAL HULL FOR SUPERIOR PERFORMANCE WITH THE NEW PROPULSION SYSTEM. A FINELY TAPERED, V-SHAPED, PLANING HULL AND AN ENGINE PLACED SLIGHTLY FORWARD FOR OPTIMUM WEIGHT DISTRIBUTION CONTRIBUTE TO THE PRESTIGE REPUTATION FOR BUILDING ALL-WEATHER HULLS, RENOWNED FOR THEIR SEAKEEPING ABILITY AND OUTSTANDING PERFORMANCE.

LINKED TO THE POD PROPULSION, THE JOYSTICK CONTROL MAKES HANDLING A PLEASURE, WHETHER AT PORT OR AT SEA.



PRESTIGE®

LUXURY MOTOR YACHTS

2012, YEAR OF ACCELERATION OF PRESTIGE





2012, YEAR OF ACCELERATION OF PRESTIGE

THE TWO DESIGN CONCEPTS FOR THE PRESTIGE 500 HAVE BEEN VERY WELL RECEIVED. AS A RESULT, WE HAVE DECIDED TO CONTINUE OUR RAPID DEVELOPMENT OF NEW MODELS ALONG THESE LINES, INCORPORATING THOSE CONCEPTS THAT HAVE PROVEN MOST POPULAR.

THE NEW PRESTIGE 550, IN THE IMAGE OF THE PRESTIGE 500



WITH THE QUICK SUCCESS OF PROMISING NEW MODELS, DESIGNED BY THE GARRONI DESIGN TEAM AND THE PRESTIGE DESIGN OFFICE, WE KNEW WE COULD INCORPORATE KEY ELEMENTS OF THESE DESIGN CONCEPTS IN THE DEVELOPMENT OF NEW MOTOR YACHTS OF INCREASING SIZE.

IN 2012, THE PRESTIGE 550 SPORT TOP AND FLYBRIDGE WILL MAKE THEIR DÉBUTS, STRENGTHENING THE POSITION OF THE PRESTIGE BRAND AT THE HEART OF THE MARKET.



THE PRESTIGE 550 MODELS WILL FEATURE INTERIOR DESIGN ELEMENTS THAT HAVE MADE THE PRESTIGE 500 A SUCCESS, INCLUDING A SPACIOUS SALOON AND A GALLEY LOCATED AT THE ENTRANCE, ALL DESIGNED ON ONE LEVEL, AND A PRIVATE ACCESS TO THE OWNER'S CABIN.

THE PRESTIGE 550 WILL ALSO FEATURE SURPRISING DETAILS ON THE EXTERIOR.

NEW 2012 PRESTIGE 550

PRESTIGE 550

THE NEW PRESTIGE BRAND: STRENGTH AND ELEGANCE

IN THE IMAGE OF THE PRESTIGE 500, THE NEW SIGNATURE OF THE PRESTIGE FLYBRIDGE LINE IS BASED ON TWO KEY PRINCIPLES: HARMONY IN DESIGN AND ASSURANCE OF POWER AND SAFETY.

HARMONY IN DESIGN

THE ELEGANT, DISTINCTIVE DESIGN OF THIS FLYBRIDGE FEATURES AN EVEN MORE ELONGATED PROFILE AND A STRONGER PERSONALITY. ITS CONTEMPORARY INTERIOR DESIGN SHOWCASES INNOVATION IN THE CONCEPT AND LAYOUT OF LIVING SPACES, INCORPORATING CLEVER DETAILS FOR ENHANCED COMFORT AND PRODUCTS OF SKILLED CRAFTSMANSHIP FOR A TOUCH OF LUXURY.

POWER AND SAFETY

THE EXCEPTIONAL SAVOIR-FAIRE OF PRESTIGE IS EVIDENT IN THE MARRYING OF SKILLED CRAFTSMANSHIP WITH THE LATEST TECHNOLOGY IN ORDER TO OFFER THE BEST AND MOST INNOVATIVE EQUIPMENT, PARTICULARLY WITH REGARD TO ENGINE POWER, FUEL EFFICIENCY AND SAFETY ONBOARD.

OPTIMAL COMFORT ON DECK

THE DECK PLAN IS DESIGNED TO FACILITATE LIFE ONBOARD, WITH WIDE SIDEDECKS, A SHELTERED FORWARD SUNDECK WITH SUN AWNING, AND A VAST COCKPIT LEADING TO A HYDRAULIC AFT SWIM PLATFORM AND PIVOTING GANGWAY. LOCATED NEAR THE GALLEY AND SHELTERED BY THE LARGE FLYBRIDGE, THE COCKPIT AFFORDS DIRECT ACCESS TO THE BRIGHT, SPACIOUS AFT CABIN WITH INDEPENDENT HEAD AND SHOWER COMPARTMENT.



AN XXL FLYBRIDGE

THE FLYBRIDGE ON THE PRESTIGE 550 IS THE KEY STRENGTH OF THIS MODEL. OF EXCEPTIONAL SIZE FOR A 55-FOOT MOTOR YACHT, IT IS ACCESSED BY AN OPEN STAIRWAY. THIS FLYBRIDGE OF IMPRESSIVE DIMENSIONS HAS ALL THE COMFORT OF A LARGE MOTOR YACHT: A GENEROUS SUNDECK, TRUE TWIN SEATING AT THE HELM, A GALLEY AND A LARGE TABLE AND LOUNGE AREA.

INTERIOR SPACE REINVENTED

THE INTERIOR DESIGN REVISITS THOSE CONCEPTS THAT MADE THE PRESTIGE 500 A SUCCESS, AND THE FIRST OF THESE IS CREATING AN IMMENSE LIVING SPACE ON A SINGLE LEVEL. IN DIRECT COMMUNICATION WITH THE COCKPIT AND THE SALOON, THE SPACIOUS GALLEY IS PERFECTLY AND DISCRETELY INTEGRATED INTO THE OVERALL INTERIOR DESIGN, CENTRALLY LOCATED TO SERVE BOTH INTERIOR AND EXTERIOR. NO LONGER SEPARATED FROM THE LIVING SPACE ON BOARD, THE OPEN GALLEY BECOMES THE CENTRE OF THAT SPACE, A DETAIL THAT IS SURE TO PLEASE THE CHEF!



BUT THE PRESTIGE 550 FEATURES MANY MORE STRONG POINTS:

THE CENTRAL GALLEY IS IDEALLY LOCATED TO SERVE THE SALOON, AND WITH A 360° PANORAMIC VIEW, IT IS BOTH COMFORTABLE AND FUNCTIONAL, WHETHER AT SEA OR AT PORT. A PROFESSIONAL HELM STATION FEATURES SEATING FOR TWO, EXCELLENT VISIBILITY, AND AN ERGONOMIC DESIGN TO FACILITATE CONTROL OF NAVIGATION INSTRUMENTS: TWO LARGE 12" MULTIFUNCTIONAL DISPLAYS, ENGINE THROTTLE CONTROLS AND THE JOYSTICK, ALL IDEALLY LOCATED WITHIN EASY REACH.

PRESTIGE®

LUXURY MOTOR YACHTS

THE OWNER'S SUITE IS IMMENSE. ACCESSED BY A PRIVATE STAIRWAY, THE SUITE FEATURES A LARGE LATERAL WINDOW IN THE HULL, BATHING THE ROOM IN NATURAL LIGHT AND AFFORDING AN IMPRESSIVE VIEW OF THE SEA. THE OWNER'S SHOWER AND HEAD COMPARTMENT IS EQUALLY IMPRESSIVE. WITH ADJOINING HEAD COMPARTMENT, SHOWER AND WALK-IN CLOSET, IT FEATURES ALL THE COMFORTS OF A MOTOR YACHT OF OVER 60 FEET! TOWARD THE BOW, THE FORWARD CABINS FORM AN INDEPENDENT LIVING AREA, WITH A GENEROUSLY SIZED HEAD COMPARTMENT AND SEPARATE SHOWER. A CLEVER LAYOUT YIELDS EXCEPTIONAL VOLUME IN THIS LIVING AREA, WITH THE ADDED BENEFIT OF A DEDICATED SPACE FOR A WASHING MACHINE LOCATED UNDER THE STAIRWAY. THE SPACIOUS GUEST CABIN FEATURES A DOUBLE BERTH THAT CAN BE CONVERTED INTO TWO SINGLE BERTHS. THE THIRD CABIN FEATURES TWO SINGLE BERTHS THAT CAN BE CONVERTED INTO A DOUBLE BERTH.



THE IDEAL PAIRING OF HULL / PROPULSION

A FORERUNNER IN THE FIELD OF POD PROPULSION, PRESTIGE HAS ALREADY ACCUMULATED MORE EXPERIENCE THAN THE COMPETITION AND HAS DESIGNED A SPECIAL HULL FOR SUPERIOR PERFORMANCE WITH THE NEW PROPULSION SYSTEM. A FINELY TAPERED, V-SHAPED, PLANING HULL AND AN ENGINE PLACED SLIGHTLY FORWARD FOR OPTIMUM WEIGHT DISTRIBUTION CONTRIBUTE TO THE PRESTIGE REPUTATION FOR BUILDING ALL-WEATHER HULLS, RENOWNED FOR THEIR SEAKEEPING ABILITY AND OUTSTANDING PERFORMANCE. IN CONDUCTING RESEARCH FOR THE HULL OF THE PRESTIGE 500 AND IN COLLABORATION WITH THE J&J NAVAL DESIGN CABINET, THE HULL HAS BEEN CAREFULLY STUDIED AND DESIGNED TO YIELD THE BEST PERFORMANCE WITH TWIN CUMMINS QSC 600 HP ENGINES, EQUIPPED WITH ZEUS 3800 PODS. THIS PAIRING OFFERS NUMEROUS ADVANTAGES: GUARANTEED EASY HANDLING BY JOYSTICK CONTROL, ENHANCED COMFORT DUE TO REDUCED NOISE AND VIBRATION, AND INCREASED FUEL EFFICIENCY BY AROUND 20 % OVER A CONVENTIONAL PROPULSION SYSTEM, AS WELL AS THE AVAILABILITY OF OPTIONAL AUTOMATIC TRIM TABS. BY PLACING THE ENGINES AS FAR FORWARD AS POSSIBLE, THE GARRONI DESIGN CABINET FOUND TWO DISTINCT ADVANTAGES: MOVING THE CENTRE OF GRAVITY FORWARD YIELDED BETTER BALANCE ON THE MOTOR YACHT WHILE ALSO FREEING A SIGNIFICANT AMOUNT OF SPACE TO THE AFT, ALLOWING FOR THE CREATION OF A GENEROUSLY SIZED, INDEPENDENT AFT CABIN.

CHOOSING THE LATEST TECHNOLOGY

LASTLY, THE SHIPYARD HAS ADOPTED THE VERY LATEST PRODUCTION METHODS AND TECHNOLOGY TO OFFER HIGHER LEVELS OF QUALITY AND COMFORT. AN INFUSION-MOULDED HULL AND DECK, THE ULTIMATE DESIGN SOLUTION, ENSURE GREATER SOLIDITY, RIGIDITY AND WEIGHT SAVINGS. HIGH-PERFORMANCE, OPTIONAL EQUIPMENT TO ENHANCE COMFORT ONBOARD INCLUDES: POWERFUL AIR CONDITIONING ADAPTABLE TO ANY CLIMATE, THE LATEST GENERATION OF HIFI, A GYROSCOPIC STABILISER, AND A HYDRAULIC SWIM PLATFORM.

THE PRESTIGE 550 BENEFITS FROM THE LATEST TECHNOLOGICAL INNOVATIONS, TAKING ITS CURRENT PLACE OF HONOUR AMONG MODELS IN THE PRESTIGE RANGE BY TRULY SIMPLIFYING LIFE ONBOARD AND OFFERING EXCEPTIONAL QUALITY AND COMFORT TO DEMANDING CUSTOMERS IN THE MARKET FOR A MOTOR YACHT OF THIS SIZE.

GAMME, SIMPLIFIANT AU MAXIMUM LA VIE À BORD ET OUVRANT AUX MARINS EXIGEANTS DES CONDITIONS DE CONFORT ET DE QUALITÉ EXCEPTIONNELLES POUR CETTE TAILLE DE BATEAU.



THE PRESTIGE 550 WILL BE EXHIBITED ON THE FOLLOWING BOAT SHOWS :
PARIS - DUSSELDORF - MIAMI - ISTANBUL - HAINAN - RIO

PRELIMINARY SPECIFICATIONS
PRESTIGE 550

Overall length	17.92 m
Hull length	16.06 m
Beam	4.79 m
Draft.....	1.17 m
Air draft	4.76 m
Aft. V deadrise	16°
Light displacement	17.70 T
Full load displacement	24.10 T
Berths	6
Cabins.....	3
Fuel tank capacity	1930 L
Max. speed**	30 Kts
Cruising speed**	24 Kts
Fuel consumption at 30 Kts	238 L
Fuel consumption at 24 Kts.....	193 L
Range at 30 Kts	190 nm
Range at 24 Kts	240 nm
Water tank capacity	800 L
Hot water heater	60 L
Holding tank capacity	120 L
Headroom:	
Saloon	2.00 m
Galley	2.12 m
Forward cabin	1.95 m
Aft cabin.....	2.00 m
3rd cabin	1.95 m
Platform dimensions	475 x 150 cm
Platform load capacity	360 kg
Air conditioning*	med 59,000 BTU, trop 84,000 BTU
Generator*	11.7 to 17.5 kva
Hydraulic gangway dimensions	2.76 m
Max. load on gangway.....	1,000 / 450
Hydraulic gangway load capacity.....	200 kg
Electric windlass power	2,000 w
Engine power	2 x 600 HP
EC category	B12, C14
Architect	J&J Design
Design	JP Concept / Garroni Design Prestige Engineering

* Optional equipment

** Speed at half-load, clean hull without antifouling

SUGGESTED PUBLIC PRICE 669 000 € EXC. TAXES

EXPERIENCE THE PRESTIGE 550 IN MARCH 2012 - CANNES (FRANCE)

PRESTIGE®

LUXURY MOTOR YACHTS

NEW 2012 PRESTIGE 550s

PRESTIGE 550S : THE COUPÉ CONCEPT REVISITED BY PRESTIGE

THE PRESTIGE 550S EXPANDS ON THE CONCEPT OF COUPÉ MOTOR YACHTS THAT BEGAN WITH THE SUCCESSFUL PRESTIGE 500 S.

THE CONCEPT OF THE COUPÉ MOTOR YACHT REVISITED BY PRESTIGE FEATURES A LARGE LIVING SPACE DESIGNED ENTIRELY ON A SINGLE LEVEL, WITH A WIDE OPENING DOOR TO THE COCKPIT AND LARGE OPENING ROOF. THIS CONFIGURATION IS IDEAL FOR CRUISING IN ANY LATITUDES, AND, CONTRARY TO CLASSIC EXPRESS MOTOR YACHTS, IT WILL PROVIDE THE ADDED BENEFIT OF PERFECTLY COMFORTABLE CRUISING IN ANY WEATHER CONDITIONS.

SEAWORTHY QUALITIES: FEATURING A POWERFUL HULL DESIGNED BY J&J, IN CONTINUITY WITH THE PRESTIGE 500

A NEW-GENERATION HULL HAS BEEN SPECIALLY DESIGNED TO OPTIMISE THE INNOVATIVE POD PROPULSION SYSTEM.

THIS HULL IS A PRODUCT OF THE SHIPYARD'S WEALTH OF EXPERIENCE WITH POD PROPULSION SYSTEMS AND OF THE RESEARCH UNDERTAKEN BY THE J&J NAVAL DESIGN CABINET IN THE PROCESS OF DESIGNING THE VERY SUCCESSFUL HULL OF THE PRESTIGE 500.

THE DESIGN CHALLENGE WAS TO CREATE A HULL THAT DEMONSTRATES EXCEPTIONAL SEAKEEPING AND OBTAINS THE BEST PERFORMANCE AT A CRUISING SPEED OF 25 KNOTS, WHILE ALSO EASILY REACHING SPEEDS OF OVER 30 KNOTS.



THE CHOICE OF CUMMINS ENGINES FOR THIS 55-FOOT MOTOR YACHT WAS SIMPLY THE BEST POSSIBLE PAIRING OF HULL-TO-ENGINE, WITH THE NEW CUMMINS QSC 600 HP MOTORS AND ZEUS 3800 PODS RESULTING IN A GAIN OF NEARLY 20% IN FUEL EFFICIENCY OVER A CLASSIC SHAFT DRIVE. ADDITIONALLY, THE CUMMINS JOYSTICK CONTROL MAKES MANOEUVRING EASY AND OFFERS THE BENEFIT OF AUTOMATIC TRIM WITH INTEGRATED TRIM TABS. BY PLACING THE ENGINE AS FAR FORWARD AS POSSIBLE, A UNIQUE SPACE IS CREATED FOR THE GENEROUS AFT CABIN.

CHOOSING CUTTING-EDGE TECHNOLOGY

CHOOSING THE LATEST TECHNOLOGICAL SOLUTIONS RESULTS IN GREATER QUALITY AND COMFORT.

WITH AN INFUSION-MOULDED HULL AND DECK, USING THE LATEST TECHNOLOGY AVAILABLE, WE GUARANTEE GREATER SOLIDITY, RIGIDITY AND WEIGHT SAVINGS.

OPTIONAL HIGH-PERFORMANCE EQUIPMENT FOR ENHANCED COMFORT ONBOARD INCLUDES A POWERFUL AIR CONDITIONING SYSTEM THAT CAN BE ADAPTED TO ALL CLIMATES AND THE LATEST HIFI SYSTEM WITH GYROSCOPIC STABILISER.

A DYNAMIC STYLE, IN THE IMAGE OF THE NEW PRESTIGE BRAND

LONG, ELEGANT LINES EXPRESS POWER AND RESTRAINT: A DESIGN TO OUTLAST PASSING TRENDS. THE NATURAL, TIMELESS ELEGANCE OF THE PRESTIGE 550 S STANDS OUT IN THE COMPETITIVE, OFTEN CROWDED, WORLD OF DESIGN.

PRESTIGE®

LUXURY MOTOR YACHTS

THE DECK PLAN: INNOVATIVE SOLUTIONS FOR EXPERIENCING LIFE AT SEA

A VAST COCKPIT FACES THE TRANSOM, WHICH CAN BE EQUIPPED WITH AN OPTIONAL HYDRAULIC SWIM PLATFORM. THE LARGE, MODULAR AFT SUNDECK CAN BE SHELTERED BY A SUN AWNING AND FEATURES ACCESS TO A SPACIOUS AFT CABIN. IN KEEPING WITH THE PRESTIGE TRADITION, A LATERAL AFT SWIM PLATFORM ALLOWS FOR COMFORTABLE WRAP-AROUND SEATING IN THE COCKPIT AND EASY MOVEMENT ONBOARD.

WIDE SIDEDECKS LEAD TO THE VAST FORWARD SUNDECK, RECESSED INTO THE DECK AND SHELTERED BY AN IMMENSE SUN AWNING.



NEVER BEFORE SEEN ON A MOTOR YACHT OF THIS SIZE: A LUXURY SPORT FLYBRIDGE

ACCESSED BY A STAIRCASE AND SHELTERED BY A SUN AWNING, THE XXL SUNDECK ON THE ROOF OF THE SPORT TOP IS A UNIQUELY RELAXING SPACE, WHETHER AT ANCHOR OR AT SEA.

ON THE INTERIOR, AS ON PREVIOUS MODELS THAT HAVE MADE PRESTIGE A SUCCESS, MANY MORE SURPRISING DETAILS AWAIT! THE PRESTIGE 550 FEATURES THE SAME DESIGN CONCEPTS THAT HAVE MADE

THE PRESTIGE 500 SO SUCCESSFUL, WITH LIVING AREAS BUILT ON A SINGLE LEVEL AND A SEPARATE OWNER'S SUITE.

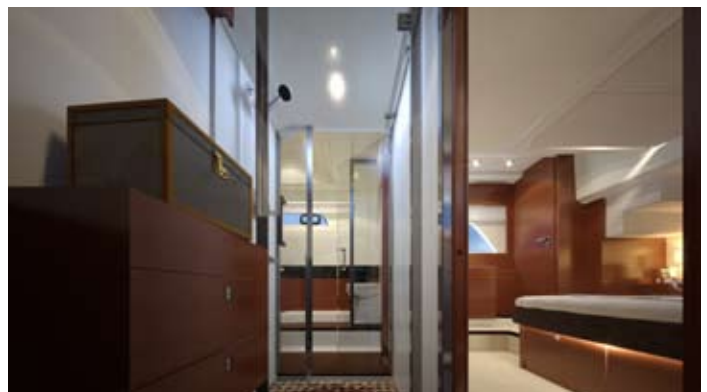
THE CENTRAL GALLEY IS IDEALLY LOCATED TO SERVICE THE SALOON AND THE COCKPIT. THE SPACIOUS SALOON BOASTS A 360° PANORAMIC VIEW, WITH PLENTY OF COMFORTABLE SEATING FOR ALL ON BOARD, WHETHER AT SEA OR AT ANCHOR.

A PROFESSIONAL HELM STATION AFFORDS EXCELLENT VISIBILITY AND FEATURES ERGONOMIC SEATING FOR TWO, FOR PERFECT CONTROL OVER THE NAVIGATION INSTRUMENTS, INCLUDING TWO 12" MULTIFUNCTIONAL DISPLAYS, ENGINE THROTTLES AND A JOYSTICK, ALL IDEALLY LOCATED WITHIN EASY REACH. THE OWNER'S SUITE IS IMMENSE. ACCESSED BY A PRIVATE STAIRWAY, THE SUITE FEATURES A LARGE LATERAL WINDOW IN THE HULL, BATHING THE ROOM IN NATURAL LIGHT AND AFFORDING AN IMPRESSIVE VIEW OF THE SEA. THE PRIVATE HEAD AND SHOWER COMPARTMENT OF THE OWNER'S SUITE IS LUXURIOUS, WITH A TRUE "EN SUITE" BATHROOM, SHOWER AND WALK-IN CLOSET: ALL THE COMFORTS OF A MOTOR YACHT OF OVER 60 FEET!

TOWARD THE BOW, THE FORWARD CABINS FORM AN INDEPENDENT LIVING AREA, WITH A GENEROUSLY SIZED HEAD COMPARTMENT AND SEPARATE SHOWER COMPARTMENT.

A CLEVER LAYOUT YIELDS EXCEPTIONAL VOLUME IN THIS LIVING AREA, WITH THE ADDED BENEFIT OF A DEDICATED SPACE FOR A WASHING MACHINE LOCATED UNDER THE STAIRWAY.

THE SPACIOUS GUEST CABIN FEATURES A DOUBLE BERTH THAT CAN BE CONVERTED INTO TWO SINGLE BERTHS.



PRELIMINARY SPECIFICATIONS
PRESTIGE 550S

Overall length	17.92 m
Hull length	16.06 m
Beam	4.79 m
Draft.....	1.17 m
Air draft	4.76 m
Aft. V deadrise	16°
Light displacement	17.70 T
Full load displacement	24.10 T
Berths	6
Cabins.....	3 + skipper
Fuel tank capacity	1 930 L
Max. speed**	30 Kts
Cruising speed**	24 Kts
Fuel consumption at 29 Kts	238 L
Fuel consumption at 24 Kts	193 L
Range at 29 Kts	185 nm
Range at 24 Kts	240 nm
Water tank capacity	800 L
Hot water heater	60 L
Holding tank capacity	120 L
Headroom:	
Saloon	2.00 m
Galley	2.12 m
Forward cabin	1.95 m
Aft cabin.....	2.00 m
3rd cabin	1.95 m
Platform dimensions	4.75 x 1.50 m
Platform load capacity	360 kg
Air conditioning**	med 48,000 BTU, trop 72,000 BTU
Generator*	11.7 to 17.5 kva
Hydraulic gangway dimensions	2.76 m
Hydraulic gangway load capacity	200 kg
Electric windlass power	2,000 w
Engine power	Cummins QSC 8.3 x 600 HP + Zeus
EC category	B12, C14
Architect	J&J Design
Design	JP Concept / Garroni Design Prestige Engineering

* Optional equipment

** Speed at half-load, clean hull without antifouling

SUGGESTED PUBLIC PRICE 649 000 € EXC. TAXES

EXPERIENCE THE PRESTIGE 550s IN MARCH 2012 - CANNES (FRANCE)

PRESTIGE®

LUXURY MOTOR YACHTS

NEW 2012 PRESTIGE 60s



IN 2012, THE PRESTIGE RANGE WILL CONTINUE TO EXPAND, INTRODUCING LARGER NEW MODELS, AND A BIG SURPRISE...

A SPORT TOP VERSION OF THE PRESTIGE 60! FEATURING ORIGINAL DETAILS FOR A MOTOR YACHT OF THIS SIZE, THIS NEW MODEL IS DESIGNED TO MEET THE EXPECTATIONS OF CUSTOMERS WHO FIND THEMSELVES ATTRACTED TO THE PRESTIGE 60, BUT WHO REMAIN FAITHFUL TO THE EXPRESS CONCEPT.

THE PRESTIGE 60 S BOASTS A MAJOR INNOVATION – A MINI FLYBRIDGE, COMPLETE WITH A HELM AND A SUNDECK – WHILE MAINTAINING THE AESTHETIC QUALITIES OF OUR EXPRESS MOTOR YACHTS.

THE PRESTIGE 60 S: THE BEST OF BOTH WORLDS

THE NEW PRESTIGE 60 S, DESIGNED BY GARRONI DESIGN IN COLLABORATION WITH THE PRESTIGE DESIGN TEAM, MAKES AN ORIGINAL STEP FORWARD IN THE WORLD OF EXPRESS MOTOR YACHTS: THE CONCEPT OF THE SPORTFLY.

THE PRESTIGE 60 S FEATURES ALL THE ELEMENTS THAT HAVE MADE THE PRESTIGE 60 A SUCCESS, INCLUDING:

- A POWERFUL AND ROBUST HULL DESIGN BY MICHAEL PETERS, IN THE TRADITION OF THE PRESTIGE ALL-WEATHER HULLS;
- A VOLVO IPS 900 POD PROPULSION SYSTEM, SYNONYMOUS WITH EASY HANDLING BY JOYSTICK AND EXCEPTIONAL PERFORMANCE WHEN COMPARED WITH CONVENTIONAL PROPULSION SYSTEMS.
- ULTRA-MODERN CONSTRUCTION METHODS AND TECHNOLOGY, UTILIZING THE INDUSTRIAL RESOURCES OF ONE OF THE WORLD'S LEADING BOAT BUILDERS TO PRODUCE A MOTOR YACHT OF UNEQUALLED VALUE-FOR-MONEY ON THE INTERNATIONAL MARKET;
- INTERIOR SPACE REINVENTED, WITH AN INTERIOR DESIGN FEATURING A UNIQUE LEVEL OF COMFORT FOR LIFE ON THE WATER, AND A FLOOR PLAN ON ONE LEVEL, WITH THE CENTRAL GALLEY IDEALLY SITUATED FOR SERVICE TO BOTH THE SALOON AND THE COCKPIT.

THE PRESTIGE 60 S: FOR DEVOTED FANS OF EXPRESS MOTOR YACHTS

VITTORIO GARRONI AND HIS DESIGN TEAM HAVE REINVENTED THE EXPRESS MOTOR YACHT, IMAGINING A FORMULA THAT COMBINES THE IDEAL ATTRIBUTES OF AN EXPRESS MOTOR YACHT – THE ELEGANT STYLE, ELONGATED LINES AND EXCELLENT PERFORMANCE – WHILE OFFERING ALL THE COMFORTS OF A FLYBRIDGE, FOR TRULY EXPERIENCING LIFE AT SEA.

- PERFECTLY INTEGRATED INTO THE OVERALL DESIGN, THE SPORT FLYBRIDGE FEATURES THE COMFORTS OF A GENEROUS HELM STATION, AN IDEAL STEERING POSITION AND A SUNDECK THAT CONVERTS INTO A DECK SALOON.
- THE PROFILE EXPRESSES A STRONG, DYNAMIC, CONTEMPORARY STYLE.
- THE SPORT FLYBRIDGE IS A NATURAL EXTENSION OF THE CHARACTERISTIC PRESTIGE STYLE: ELEGANT LINES, LARGE GLASS PANELS INTEGRATED INTO THE DESIGN, AND A POWERFUL BOW.

THE PRESTIGE 60: THE NEW REFERENCE IN THE WORLD OF EXPRESS MOTOR YACHTS

EXPERIENCE THE PRESTIGE 60 S IN MARCH 2012 - CANNES (FRANCE)

PRESTIGE®

LUXURY MOTOR YACHTS

NEW 2012

PRESTIGE 60s



PRELIMINARY SPECIFICATIONS PRESTIGE 60S

Overall length	19,50 m / 63'1»
Hull length	17,30 m / 56'9»
Beam	5,12 m / 16'9»
Draft.....	1,32 m / 4'3»
Air draft	5,70 m / 18'7»
Aft. V deadrise	17°
Light displacement	22 500 kg / 49603 Lbs
Full load displacement	31 150 kg / 68673 Lbs
Berths	5
Cabins.....	3 / + 1 skipper
Fuel tank capacity	2800 L / 741 US gal
Max. speed**	30 N
Cruising speed**	25 N
Fuel consumption at	262 L / 69 US gal
Fuel consumption at	215 L / 57 US gal
Range at	290 NM
Range at	325 NM
Water tank capacity	800 L / 212 US gal
Hot water boiler	60 L / 16 US gal
Holding tank capacity	330 L / 87 US gal
Headroom:	
Saloon	2,08 m / 6'8»
Galley	2,30 m / 7'5»
Forward cabin	1,95 m / 6'4»
Aft cabin.....	1,96 m / 6'4»
3rd cabin	2,04 m / 6'7»
Platform dimensions	447 x 146 cm / 14'7» x 4'8»
Platform load capacity	370 kg / 815 Lbs
Air conditioning*	58 000 BTU
Generator*	11/17,5 kw - 230 V / 13,5 kw
Hydraulic gangway dimension	289 cm / 9'5»
Hydraulic gangway load capacity	200 kg / 440 Lbs
Electric windlass power	2 000 W
Engine power	Volvo IPS 900 2x700 hp
CE category	B 14/C18
Architect.....	Michael Peters
Concept & Design	JP Concepts / Garroni Design Prestige Engineering

* Optional equipment

** Speed at half-load, clean hull without antifouling

SUGGESTED PUBLIC PRICE 999 000 € Exc. TAXTES

PRESTIGE YACHTS OFFER SEAKEEPER GYRO STABILIZER A NEW ERA IN STABILITY COMFORT ONBOARD:

PRESTIGE YACHTS FIRST FRENCH LUXURY MOTOR YACHT MANUFACTURER TO FIT THE SEAKEEPER 7000A, THE MOST AWARDED ACTIVE GYRO STABILIZER.

REVOLUTIONARY EQUIPMENT ALLOW A PERFECT ANTI-ROLL ON BOARD

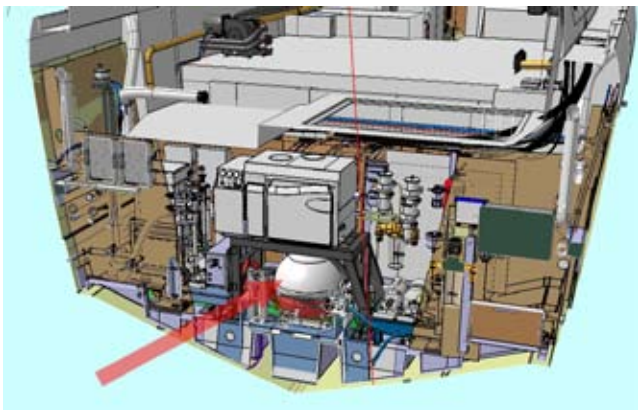
VIRTUALLY ELIMINATE ZERO AND LOW SPEED BOAT ROLL, WORKING AT ANCHOR AND UNDERWAY

REQUIRE NO THROUGH-HULL CUTTING, ELIMINATING THE NEED FOR DRAG PRODUCING & DAMAGE-PRONE APPENDAGES

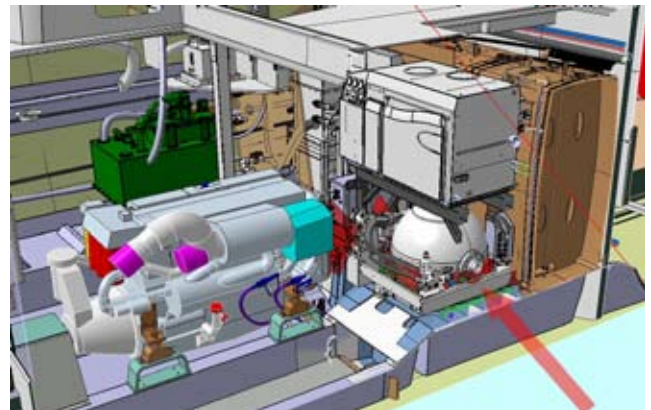
PROVIDE YACHT MANUFACTURERS & OWNERS NEW HEIGHTS OF LUXURY AND PERFORMANCE, OFFERING THE BEST IN COMFORT AND SAFETY

NEW STEP PRESTIGE OFFER MORE COMFORT & INNOVATIVE & TECHNOLOGY TO CUSTOMER

PRESTIGE 550 / 550S / 60 / 60S



Gyro-stabilizer PRESTIGE 550



Gyro-stabilizer PRESTIGE 60

