



FERRETTI FY 550 PREVIEW

FGAPAC – May 2015



FY 550 NEW



Preliminary, not binding

FY 550 NEW



FY 550 NEW



MAIN DECK SALOON



Preliminary, not binding

MAIN DECK SALOON



MAIN DECK SALOON



Preliminary, not binding

MAIN DECK GALLEY



Preliminary, not binding

LOWER DECK MASTER CABIN



Preliminary, not binding

LOWER DECK MASTER CABIN



LOWER DECK MASTER CABIN detail



LOWER DECK MASTER BATHROOM



LOWER DECK MASTER BATHROOM



FY 550 NEW

NEW STERN DESIGN WITH:

- 1) A NEW INTEGRATED TENDERLIFT
- 2) CONCEALED GANGWAY

NEW FLYBRIDGE DESIGN

- 1) SPORTY LOOK
- 2) ENLARGED SPACE
- 3) MORE SITTING AREA

NEW MAIN DECK AND LOWER DECK WINDOWS DESIGN

- 1) MORE NATURAL LIGHT
- 2) FLUSH PORTHOLES



Preliminary, not binding

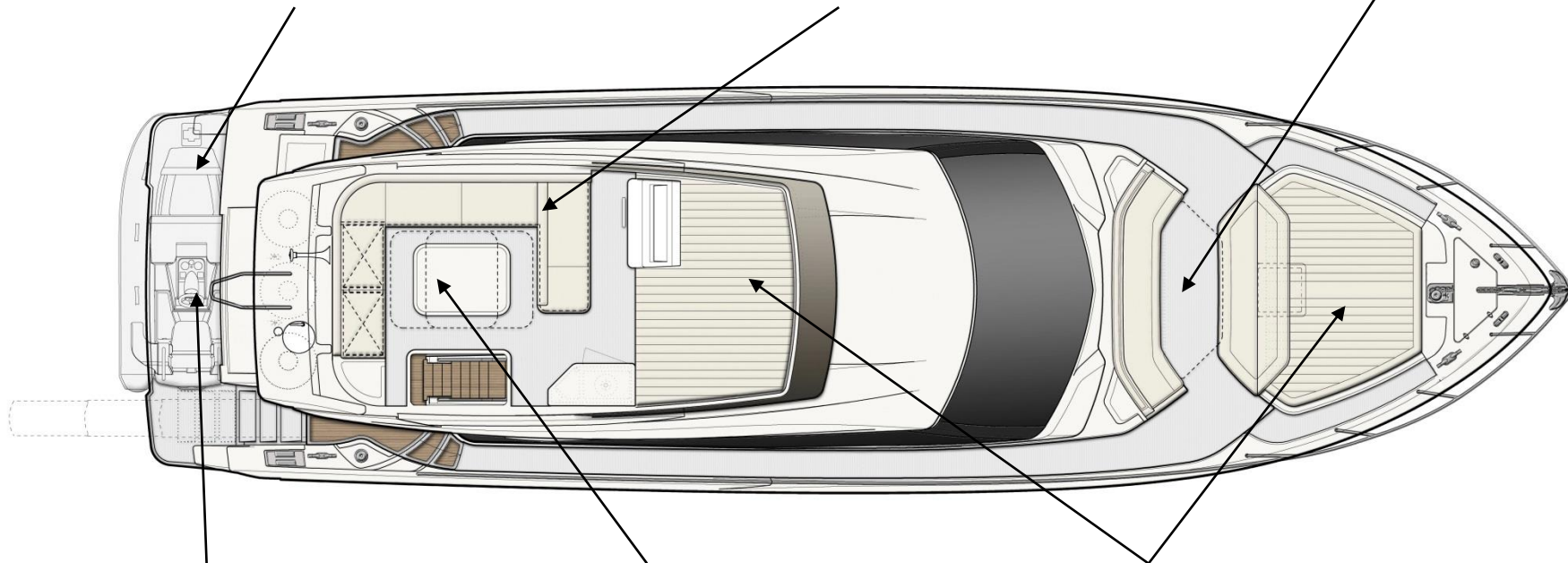
SIDE VIEW

FLY BRIDGE LAYOUT

TENDER LIFT with integrated GRP stair = safer + more efficient and useful recreational area

Extended flybridge area with fully equipped WET BAR

NEW EXTERNAL BOW DINETTE



- Tender up to 3,10 m
- Jet Ski Seadoo Spark

C SHAPED SOFA FOR DINING AND RELAXING

2 SEPARATED SUN PAD AREAS

Preliminary, not binding

FLY BRIDGE LAYOUT

NEW BOW DINETTE



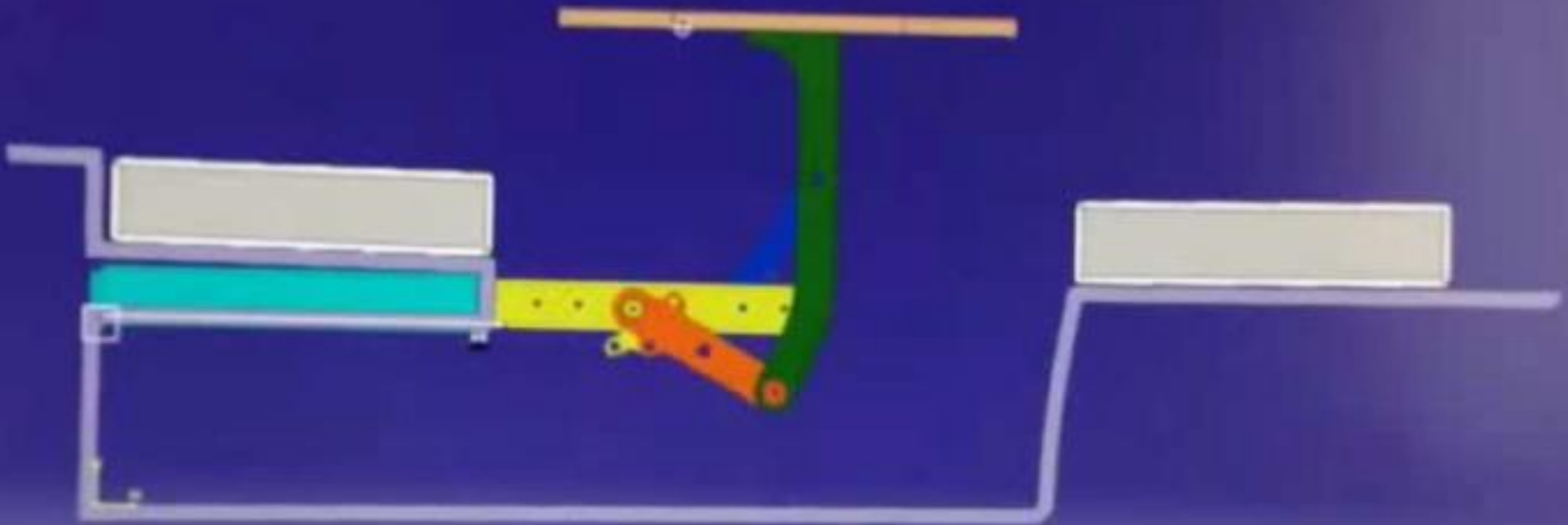
NEW BOW DINETTE



preliminary, not binding



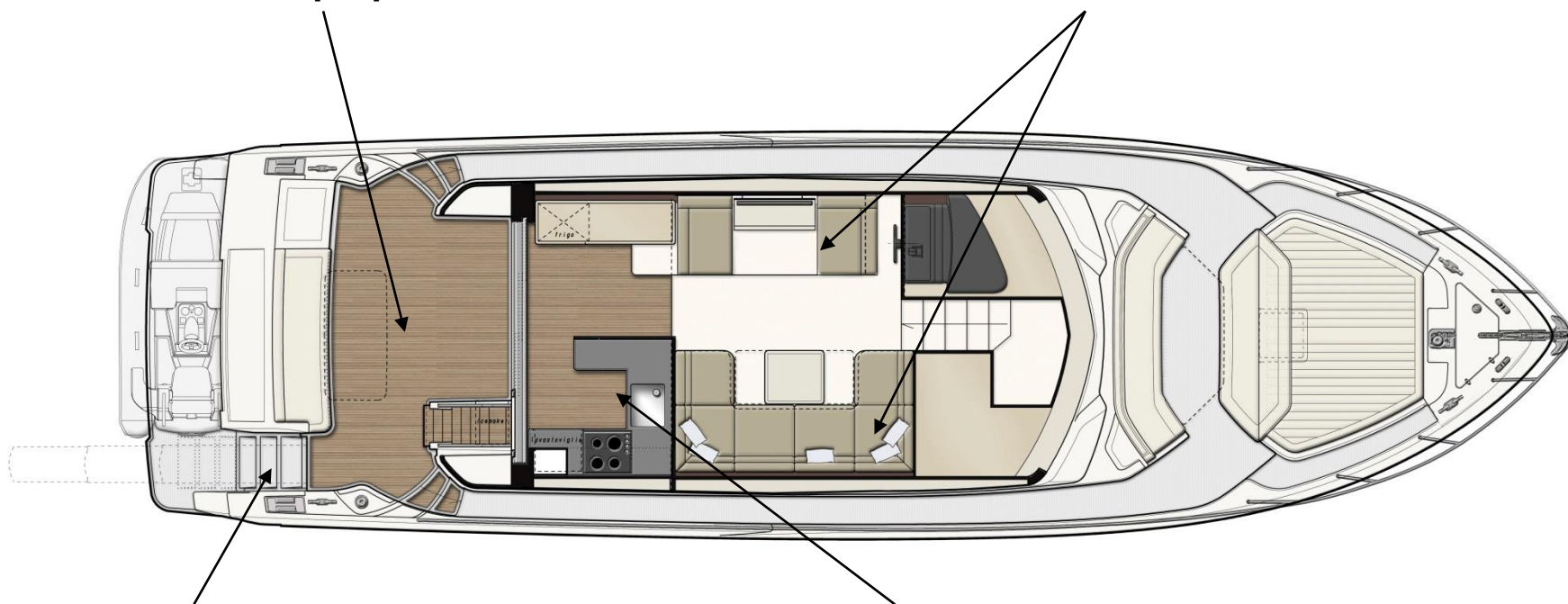
NEW BOW DINETTE



MAIN DECK LAYOUT

Wide COCKPIT with extendible table for 6 people

Double facing LOUNGE area to improve the comfort and the entertainment



Access from/to cockpit with steps or concealed gangway

OPEN KITCHEN, positioned in between salon and cockpit to reinforce the relationship of these two areas and help natural ventilation

Preliminary, not binding

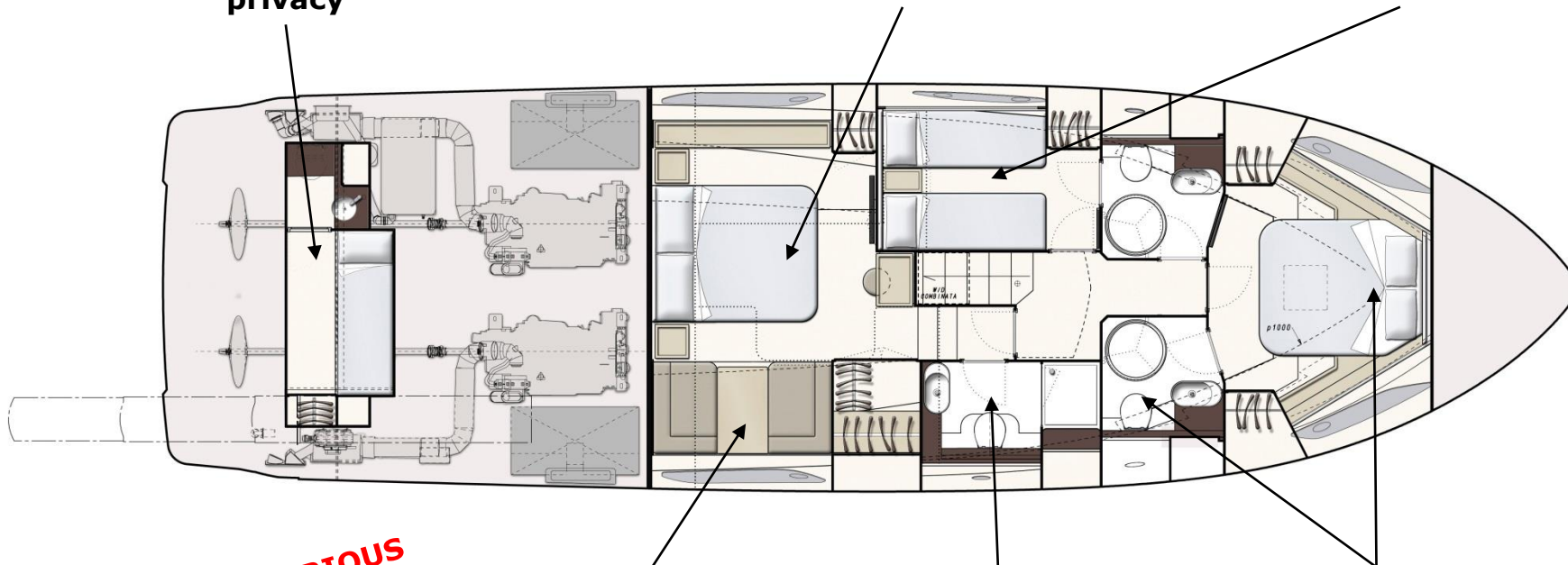
MAIN DECK LAYOUT

3 CABINS + 3 BATHROOMS LAYOUT

CREW CABIN separated
for a higher level of
privacy

MASTER CABIN
FULL BEAM

GUEST CABIN WITH
BATHROOM



NEW LUXURIOUS
FURNITURES AND
MATERIALS
COMBINATIONS !!!

Master Cabin
PRIVATE
DINETTE

MASTER BTHROOM
WITH SEPARATED
SHOWER UNIT

VIP CABIN with
private
bathrooms

Preliminary, not binding

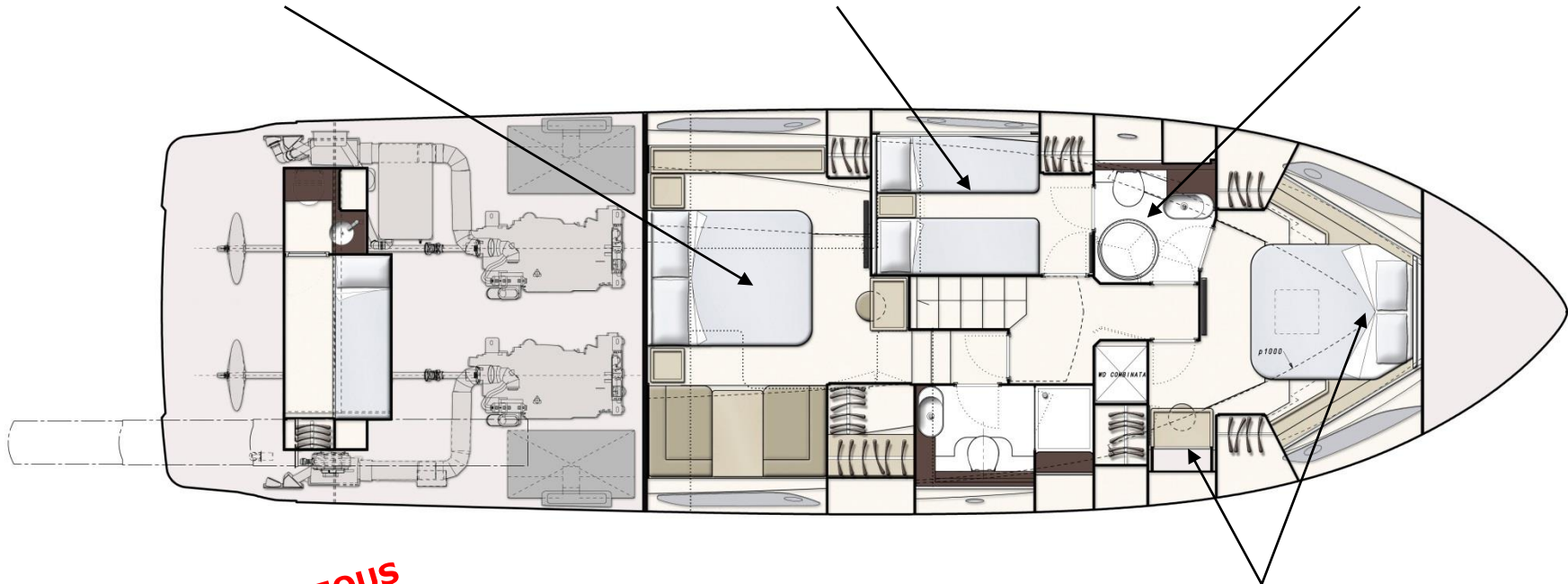
LOWER DECK LAYOUT

3 CABINS + 2 BATHROOMS LAYOUT

**MASTER CABIN WITH
ENSUITE BATHROOM**

**GUEST CABIN WITH
2 SINGLE BEDS**

**BATHROOM WITH
DOUBLE ENTRANCE**



**NEW LUXURIOUS
FURNITURES AND
MATERIALS
COMBINATIONS !!!**

**VIP CABIN with VANITY TABLE
AND LARGER STORAGE**

Preliminary, not binding

LOWER DECK LAYOUT

NEW CUMMINS 2 x QSM11 Potenza 715 mhp / 526 kW a 2500 RPM

- Proven acceleration and torque performance in thousands of boats from this dependable, four-valve-per-cylinder workhorse
- Quiet and fuel efficient operation from innovative four-cycle design
- Excellent, virtually smoke-free sociability ensures a pleasurable boating experience
- Extended engine life from heavy-duty design elements
- Global service network



STABILIZATION SYSTEM



Preliminary, not binding

- **COMPETITIVE PRICE** POSITIONING -> FROM EURO 1.190.000,00
- COMPLETELY **NEW** DESIGN FOR **HULL** AND **SUPERSTRUCTURE**
- **SPORTY DESIGN + NEW WINDOWS**
- **TENDER LIFT** WITH INTEGRATED GRP STAIRS + **HIDDENWAY** GANGWAY
- **2 DIFFERENT CABINS' LAYOUT**
- **EFFICIENT ENGINE** CONFIGURATION
- **OWNER OPERATED VESSEL** of the FY range which takes the new design direction to a new level and marks an important step forward for the 50' - 60'
- **2 YEARS** FULL WARRANTY

Preliminary, not binding



FY 550 NEW – WORK IN PROGRESS



FY 550 NEW – TECHNICAL SPECIFICATIONS

The data below refer to the standard version.

ENGINES

2 x Cummins QSM11 Power 715 mhp / 526 kW at 2500 rpm - Shaft line (std)

MAIN SIZES

LOA = Overall Length standard ISO 8666	16,90 m - 55 ft 5 in
LH = Hull length standard ISO 8666	16,43 m - 53 ft 11 in
LWL = Waterline length (boat fully laden)	14,17 m - 46 ft 6 in
Maximum beam	4,86 m - 15 ft 11 in

TECHNICAL DATA

Hull type: 10° deadrise warped hull with spray rails

Displacement unladen	22 t - 48502 lbs.
Displacement laden	27,4 t - 60407 lbs.
Depth under propellers (boat fully laden)	1,38 m - 4 ft 6 in
P = pulpit	0,47 m - 1 ft 7 in
Fuel tank capacity	2500 l - 661 US Gals.
Water tanks capacity	710 l - 188 US Gals.
Maximum number of people on board	14
Design category CE 2003/44	A
Certification documents	B + F + Aa (Sound Emission) - RINA S.p.A.

Preliminary, not binding



FY 550 NEW – TECHNICAL SPECIFICATIONS

ENGLISH

550 - Preliminary

STANDARD EQUIPMENT

MAIN DECK

Access to aft platform through a GRP step and a stainless steel gate

Access to the engine room through a hatch and a stainless steel and teak ladder

Access to the flybridge through stainless steel and teak steps, stainless steel handrail

Access to the storage area (crew cabin optional) through stainless steel and teak steps

Acoustic alarm

Aft sliding glass door with stainless steel frame

Bathing ladder

Boat hook

Bow hawse in stainless steel

Bow living area (2 sofas)

Bow pulpit with side rails

Bow thruster

Bruce style anchor (kg. 20, 75 mt chain, 8 mm diameter)

Cockpit cabinet

Cockpit lighting

Cockpit sofa

Cockpit table

Cylindrical fenders (6) and spherical fenders (2)

Electric anchor windlass (1400W) with controls at bow, main helm position and flybridge helm position

Fairleads

GRP deck flooring with no-slip surface

Hand-held shower with hot/cold fresh water on the aft platform

Hatch to forepeak

Mooring line holder in the forepeak

Mooring lines (mt 12, 4)

Mooring stations (2)

Perimetrical curtain rod for canopies (cockpit)

Protective shades for front and side windows

Pull handles in the engine room (engine and generator shut down, air intakes (2) shut off, activation of fire extinguishing system)

Sea water fire fighting hose and chain washdown at bow

Shore line cable (230 V mt 15)

Stainless steel deck hardware

Stainless steel mooring cleat: at stern (2), at midship (1 for each side) and at bow (2)

Storage in the stern bench

Stowage in the port side support

Stowage in the support of flyingbridge ladder

Sunlounge pad at bow with sunbathing cushions

Teak cockpit flooring

Saloon

Aft tempered glass sliding door with stainless steel frames

Armchairs (2) port side. Front one convertible in pilot seat

Cabinets with shelves

Dining area (sofa and extensible dining table)

Fitted carpet

Hi-Fi system

Indirect lighting

Roman blind (single) on side windows

TV LCD/LED 22" or equivalent

Venetian blinds on aft sliding door

Galley

Cabinets with shelves and drawers

Ceramic cooktop

China tableware, glasses and stainless steel cutlery for 6

Extractor fan over cooktop

Fridge + freezer

Microwave oven with grill

Overhead kitchen cabinets

Quartz/resin work counter top

Sink

Venetian blinds on aft window

Vinyl fabric flooring

Main helm position

Automatic pilot control unit

Barometer, clock and hygrothermometer

Chartplotter with LCD colour display and GPS

Cigarette lighter outlet (12 V)

Display for boat data management

Electric steering

Electronic controls for engine clutch and throttle with easy-dock and auto-troll functions

Fitted carpet

Magnetic compass

Main electrical panel

Main helm position equipped with full instrumentation

Side window with tilt opening

Steps covered with fitted carpet leading to lower deck

Synoptic switchboard with alarms

VHF

Windscreen wipers (2) with timer

FLYBRIDGE

Access to the cockpit through stainless steel and teak steps, stainless steel handrail

Cockpit stairs skylight

Cover for helm position, helmsman bench and cabinet

Deflector

Fully fitted cabinet with storage and sink

GRP radar arch (support for radar, antennas, signals)

Life jackets (8)

Life-buoy with floating lifeline and luminous buoy

Liferaft for 8

Lighting on the flybridge

Navigation lights

Portable spotlight 1/2 mile range, (12V)

Railing

Sofa with storage space underneath

Stainless steel signal/flag mast

Sunlounge pad with sunbathing cushions

Table

TV Antenna

Warning horn with compressor

Watertight loudspeakers (2)

Flybridge helm position

Chartplotter repeater with LCD colour display with GPS

Cigarette lighter outlet (12 V)

Electric steering

Electronic controls for engine clutch and throttle with easy-dock and auto-troll functions

Helmsman bench

Instrument board

Preliminary, not binding

FY 550 NEW – TECHNICAL SPECIFICATIONS

Locker
Mirrors
Shower with plexiglass sliding partition
Stainless steel openable porthole
Washbasin with quartz/resin countertop
WC control panel
Wooden floor

AFT AREA

Aft Storage

Access to the main deck area through stainless steel and teak steps

Crew cabin at stern with bathroom (OPTIONAL)

Access to the main deck area through stainless steel and wood steps

Bed
Curtains
Folding stainless steel washbasin with hot/cold fresh water
Manual WC
Mirror
Stainless steel openable portholes (2)
Wardrobe

TECHNICAL AREA

Engine room

Access to the cockpit through a hatch and a stainless steel and teak ladder
Air intakes with remote controlled shut off
Change over valves (2) for emergency water pumping from the bilge
Electric bilge pump
Electric self-locking ventilation fan with remote controlled shut off
Fire extinguishing system with automatic/manual control
Fuel tanks (2) (tot. lt. 2500)

Fuel tanks level indicators
Generator (7,5 kW)
Portable lamp
Racor diesel engine filters (2) with bypass + Hummel
Tap fresh water
Water filter for generator cooling system
Water filters (2) for engine cooling system
Water heater (lt. 30 230V)
Watertight forward bulkhead

PROPULSION AND CONTROL EQUIPMENT

Propulsion and control

Bow thruster
Hydraulic steering
Integral V-Drive transmission
Stuffing box with dripless shaft seal, low maintenance
Underwater silenced exhausts

Stabilization systems

Trim tabs

ELECTRONIC EQUIPMENT

Communication

VHF (main helm position)
VHF repeater (flybridge helm position)

Navigation

Autopilot control unit (main helm position)
Chart plotter LCD display with autopilot (flybridge helm position)
Chartplotter with LCD colour display and GPS

SYSTEMS

Fire extinguishing system

Preliminary, not binding