



HAND CRAFTED BY AUSTRALIA'S MOST AWARDED LUXURY MOTOR YACHT BUILDER

A white and black Riviera 50 Sports Motor Yacht is shown from a side profile, moving across a body of blue water. The yacht has a sleek, modern design with a large black canvas enclosure over the cockpit area. It is leaving a white wake behind it. In the background, there is a line of green trees under a clear blue sky.

In a league of its own. Introducing the Riviera 50 Sports Motor Yacht.

WORLD PREMIERE 2020

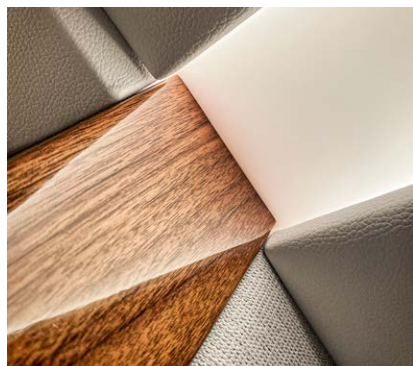
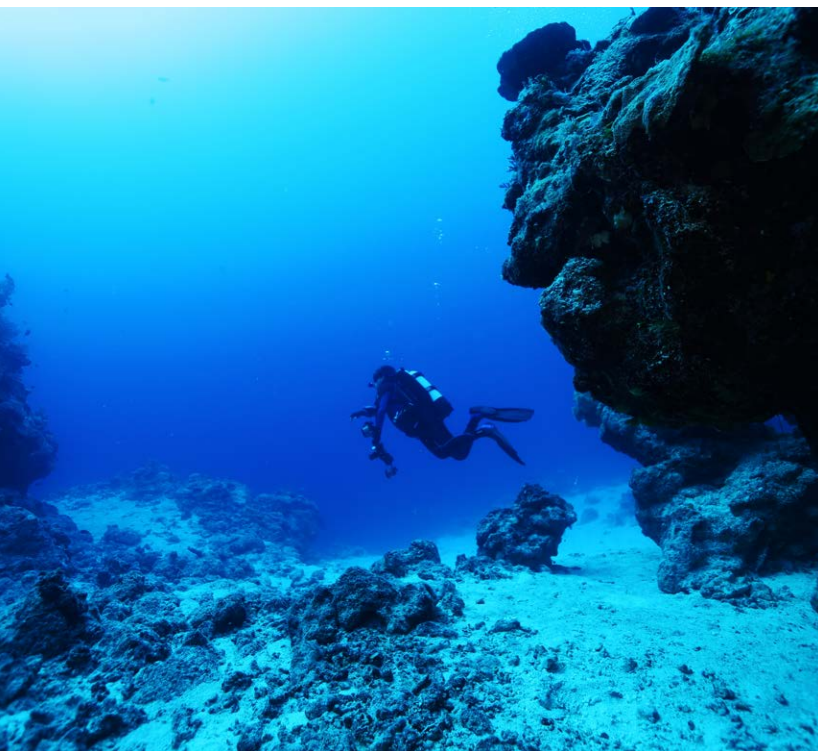
In a league of its own

The world premiere of Riviera's Sports Motor Yacht design in 2017 has given luxury motor yacht owners the opportunity to fulfil their dream of exhilarating sports performance complemented by a wide range of luxury lifestyle appointments. Both the 72 and 68 Sports Motor Yacht models answered the demand for a luxury long-range motor yacht that excels in all water sports from fishing to paddle boarding to diving. • With the new 64 and 50 models, Riviera have taken the essential DNA of their Sports Motor Yacht design and scaled it to satisfy those wanting that same sports performance and blue water capability. • Our new 50 SMY has all the Sports Motor Yacht essentials, including walk around side decks, foredeck relaxation zone, all weather alfresco deck entertaining, spacious luxurious saloon with internal staircase to an enclosed air-conditioned flybridge and state-of-the-art helm. And the generous three stateroom/two bathroom accommodation deck features a magnificent full-beam master stateroom with private bathroom and walk-in robe. • Engineering excellence matches her sports performance and a very smooth, quiet and efficient ride. Finally, her wide, uncluttered cockpit enables all manner of water sports action. • Owners have embraced this new and innovative design and we now have Riviera Sports Motor Yacht owners enjoying the Mediterranean, South-east asia, the Caribbean, the South Pacific and the Whitsundays. • Proudly built in Australia, the Riviera Sports Motor Yacht is in a league of its own.



Rodney Longhurst
Owner Riviera







A luxury yacht with blue-water sports performance

A smooth and quiet ride at speed and renowned Riviera luxury appointments ensure that this blue-water yacht has it all. • 4D Designs in collaboration with the Riviera design team have created this unique new series of sports motor yachts inspired by a wish list from our global family of experienced Riviera owners. Now you and your loved ones can celebrate true long range luxury cruising the Riviera way. Or simply escape from the everyday for a relaxing weekend away. • Onboard your Riviera Sports Motor Yacht, you will fall under an exotic spell in the absolute lap of luxury, relaxing in complete tranquillity or revelling in adventure, exploring, diving, snorkelling, kayaking, fishing, creating and sharing truly memorable moments with family and friends – for as long as your schedule allows or heart desires.



Step aboard and start your next adventure

Riviera Sports Motor Yachts are uniquely specified craft that share a single vision of unlimited adventure in absolute luxury. • The generous cockpit opens up a whole world of sporting opportunities from fishing to diving to paddle boarding or kayaking. The alfresco deck is the entertaining centre offering privacy and shelter from the elements. • Step easily from the dock and enter via the outward opening transom doors. At anchor, both these doors open a full 180 degrees and lock flat against the transom, extending the cockpit out to the boarding platform. • The cockpit has ample storage as well as a fridge/freezer, separate icemaker and a barbecue station with wet bar and sink, all protected by lids that stay up on gas struts, with LED lighting and an internal gloss finish makes cleaning easy. • Imagine you're entertaining in the cockpit now: it's sunset and you've found the perfect anchorage in a secluded bay. Another magic moment savoured aboard your 50 Sports Motor Yacht.







Exceptional access and relaxation to the foredeck

Riviera's Sports Motor Yachts feature wide side decks with raised coamings illuminated in soft blue LED light, the sure-footed grip of non-skid surfaces and the reassuring support of 316 marine grade stainless steel handrails all designed to make movements aboard confident.

- The foredeck on the 50 SMY is a versatile space at anchor or underway – to launch or retrieve the tender, for sightseeing or relaxation. The foredeck boasts plentiful storage lockers and is where most owners choose to securely store their tender. Unloading is effortless courtesy of a low-profile boom davit.
- At anchor, the foredeck transforms from a practical tender cradle to a sumptuous sunlounge with adjustable backrest. The perfect spot to stretch out and relax.



The magic of the alfresco deck

A beautiful space, offering protection from the elements, the alfresco deck is the entertaining centre of your yacht. To appreciate this clever design, slide open the tinted glass door, then open out the large tinted glass awning window, both framed in superior stainless steel. Now the alfresco connects and flows through to the saloon and galley. • There are two supremely comfortable lounges either side, the L-shaped lounge to port wraps around a superbly crafted folding teak table and there's a large insulated locker located under the seat. • The space under the starboard lounge is also put to good use with an infill cushion that easily converts the lounge into a superb daybed... perfect for lazy afternoons. • You'll love relaxing and entertaining in the alfresco deck - one of the many outstanding design features that affirm Riviera's Sports Motor Yachts are in a league of their own.







Designer galley with every detail carefully considered

The galley of your Riviera Sports Motor Yacht could easily pass for a fine designer kitchen and you can expect lots of company from your guests along with the best kind of kitchen ergonomics. • Premium stainless steel appliances are all beautifully integrated into the handcrafted Riviera joinery of varnished exotic timbers and solid surface benchtops. Additional storage lockers are built in overhead, along with a pull-out pantry drawer. Opposite the galley is a large freezer to help you provision for extended time aboard. • Everything you need to create gourmet meals in no time; two refrigerator drawers, a combination oven and microwave with grill, and an electric cooktop with pop-up pot keepers and rangehood. And when it's clean-up time the option of a dishwasher is always appreciated. • Riviera have set the standard in galley design, always creating an inspired space to enjoy.



Wrap-around lounges will inspire the conversation

The further afield your travels take you the more you will delight in all the refinements and comfort of your saloon, your favourite retreat – a place to unwind. • Here our designers have captured a wonderful ambiance, always peaceful with the finest of fabrics and leatherette panelling with the comfort of reverse cycle air conditioning. • Beneath the staircase leading to the flybridge is a fine example of Riviera's renowned craftsmanship - your skillfully varnished timber bar and liquor cabinetry with built-in lockers to keep glassware and bottles secure. • Ahead of the galley to port is the L-shaped leather lounge dining area with a polished timber table – cleverly designed to fold at both ends and manually slide sideways. And directly opposite is a further U-shaped lounge to stretch out and relax. • The saloon lounge can also become a media room with an LED TV located forward of the lounge and a superb sound system hidden in the cabinetry powers 4 surround sound speakers in the saloon with two more in the alfresco deck.





A welcoming glow of luxury

In the accommodation deck, you'll find a level of appointments normally only associated with the finest hotels. So, enter the timber-finished companionway and immediately notice the headroom, space and welcoming light... a discreet guiding glow of soft LED lighting throughout. You'll feel pampered straightaway. And you still have the three staterooms and two bathrooms to experience and enjoy. When the finest materials meet superior flair, true luxury is created. That's exactly what you and your guests will experience on the accommodation deck of your Riviera Sports Motor Yacht.

Full-beam master stateroom, private bathroom and a walk-in robe

Large and luxurious, the master stateroom will delight. The walk-around, queen island bed is pure heaven and features a plush headboard in concert with lush deep pile carpet. Boutique bedside tables of course, and these are grain matched with leather inlays. And there is still ample room for a highly polished timber drawer bureau port side and a chaise lounge to starboard. To complete your opulent retreat, a designer ensuite bathroom and walk-in wardrobe are located forward on the port side. • A beautifully handcrafted vanity cabinet, solid surface benchtop, designer full-sized shower and more, the effect is both appealing and contemporary. Naturally both the master and bathroom feature reverse-cycle air conditioning. Large hull windows fill the suite with natural light and a special feeling of being at one with your surrounds. Your floating beach house comes with a cedar-lined walk-in wardrobe, full length hanging space and cedar shelves. Relax and unwind. Your LED TV, with surround sound system is standing by waiting to entertain.









Give your guests the VIP treatment

On board your magnificent Riviera 50 Sports Motor Yacht, guests receive VIP treatment with the breathtaking forward stateroom. You could be forgiven for mistaking it for the master, such is the level of comfort, finish and appointments.

- As in the master, the island bed is queen-sized and walk around. Notice the LED lighting situated here too, and the superb, handcrafted cabinetry. That's in addition to large his and hers, cedar-lined hanging lockers, as well as more storage under the island bed. Here you'll find a Dyson cordless vacuum, stowed in its own charging station, always at the ready.
- There's plush pile carpet underfoot, stylish hull windows perfectly framing the natural beauty outside as well as the option of an LED TV and sound system. Enjoy the comfort of reverse-cycle air conditioning or open the hatches above and catch a beautiful sea breeze.
- Needless to say this detail in luxury and pampering also extends to the adjacent designer bathroom.

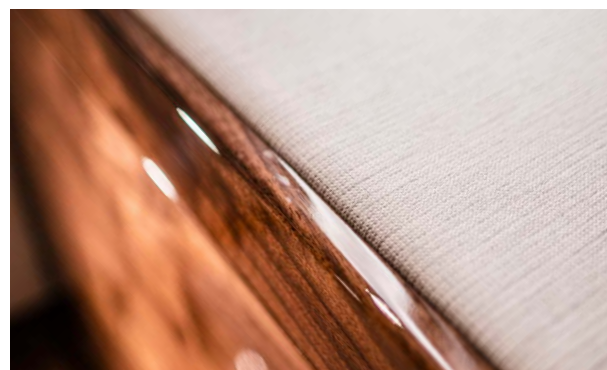
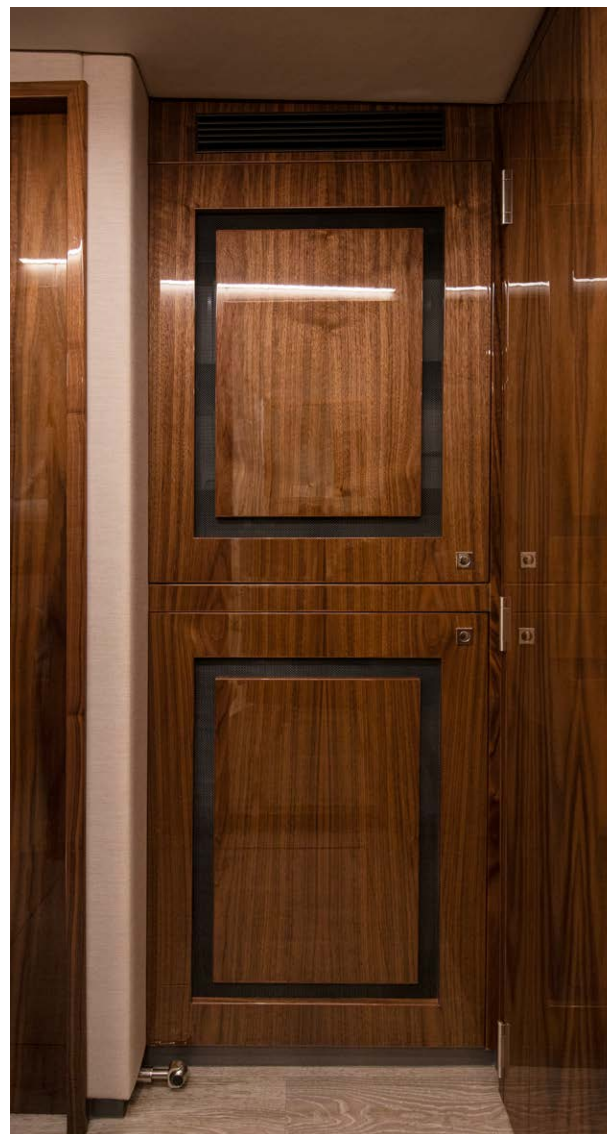


Very accommodating

The starboard cabin will delight guests with the sparkle of natural light from the tinted hull window and fresh sea air at anchor, courtesy of an opening porthole. There are two Pullman style beds with large storage space below, bedside table, storage cupboard with drawers, reverse cycle air conditioning, plush carpet, LED lighting and a cedar-lined hanging locker. • Guests share the dual access bathroom of the forward stateroom via the day head and are always pleasantly surprised by the space and flair – a frameless, full sized shower, designer vanity, solid surface benchtop and large mirrors.

Pack a little lighter

Optional for your 50 Sports Motor Yacht is the laundry station discreetly and centrally located in the companionway of the accommodation deck. A stacked washer and dryer provide an efficient solution to all the fresh laundry needs of everyone on board. So, you can pack a little lighter and enjoy your adventures for as long as you like.





A sensational flybridge

You will be immediately impressed by the superb all-round visibility through tempered, tinted glass curved around three sides with Strataglass clears sealing the rear.

- The main helm is forward to port and an optional aft helm can be located starboard. Fingertip joystick control with electric steering and state-of-the-art electronic and engine systems means docking your Riviera Sports Motor Yacht into a marina berth will be as relaxed as your day on the water.
- Opposite the helm to starboard is another lounge where guests can stretch out, relax and chat to the skipper whilst underway.
- A supremely comfortable U-shaped lounge is located portside. The hand varnished solid timber, folding table drops down and an infill cushion converts the lounge into a big beautiful daybed. This daybed also comes in handy as a very accommodating double bed for overnight guests.
- At anchor, the flybridge becomes another entertaining deck, with commanding views matched to your favourite music through a powerful 4 speaker sound system. Opposite the aft lounge, a wet bar, equipped with drawer fridge, sink and solid surface bench top ensures a constant supply of snacks and drinks to keep the party flowing.



The pure joy of being in command

Cast off and explore a world full of new ports, secluded bays, friends, entertaining and recreational possibilities. The helm is located port side, with fully adjustable captain and companion chairs and a console brimming with superior technology. The functionality of all the operating systems, helm controls and touchscreens have been ergonomically designed and engineered for total ease and efficiency. Add the option of single-glance control with cameras to the saloon, bow anchor, cockpit and engine room feeding directly to your navigation screens. Visibility is outstanding through the curved, toughened glass windscreen. • The Riviera 50 Sports Motor Yacht comes with a choice of two popular power options - twin turbo diesel Volvo Penta IPS or MAN turbo diesel shaft drive engines. Whichever you choose, the dynamics are the same - effortless acceleration, quick to the plane, quiet and deceptively fast. • This unique luxury motor yacht has blue-water capability you have to experience to fully appreciate. Press a button and twin sunroofs slide back to invite a cooling sea breeze or the stars above. The art of the escape has never been more fulfilling. Or simpler to command.





Riviera 50 Sports Motor Yacht



Tender and Davit (optional)



Foredeck Sunpad (optional)



Volvo Penta IPS Drive option
Gyro (optional)



MAN Shaft Drive option
Gyro (optional)

Specifications

Length Overall (inc. swim platform and bow sprit)	17.01 m	55' 10"	Sleeping Capacity	6 persons	
Hull Length (Lh to ISO8666) *	15.43 m	50' 7"	Cockpit Area	6.50 m ²	69.97 ft ²
Beam (inc. gunwale)	4.96 m	16' 3"	Mezzanine Deck	5.90 m ²	63.51 ft ²
Maximum Draft (inc. props)	1.45 m	4' 9"	Total	12.40 m ²	133.47 ft ²
Dry Weight **	25,500 kg	56,218 lbs	Bridge Clearance	6.85 m	22' 6"
Fuel Capacity ***	3,300 L	872 US gal	Engine Option	533 kW	725 hp each
Water Capacity ***	460 L	122 US gal	Volvo Penta D11 IPS 950 x 2		
Holding Tank Capacity ***	151 L	40 US gal	Engine Option	588 kW	800 hp each
			MAN i6 Shaft Drive x 2		

*Specifications may vary on a regional basis.

Specification clarification

* Length of the hull (Lh) to ISO8666: Includes all structural and integral parts (ie. the moulded length of the hull). It excludes parts that can be removed in a non-destructive manner without affecting the structural integrity of the craft, (eg. pulpits, outdrives, driving platforms, rubbing strakes).

** Dry weight represents the estimated minimum weight of a yacht with standard engines and options, no fuel or water on board, no equipment or provisions and no personnel. The stated dry weight may be exceeded.

*** Denotes net tank capacity. For useable capacity do not rely on more than 90% of tank capacity. Actual capacity will vary according to yacht trim and sea state. Speeds are subject to normal weather conditions, fuel and/or water levels, passengers and equipment loads.

Our care for your information

Due to the constant refinement of specifications and design by Riviera Australia, the information in this document may change without notice. Specifications may vary with time and by region. Some images or illustrations in this brochure may include options or custom details. • Please note that as safety equipment specifications or standards vary by country, this aspect of your purchase will need to be completed by yourself and or your Riviera representative. • Please refer to your Riviera representative for specific warranty cover and the latest detailed list of inclusions and options prior to purchase..

The Reassurance of owning a Riviera

What sets Riviera apart as one of the world's great luxury motor yacht builders? • Is it the devotion to quality, standard of materials used, the ocean-tested structural strength, unsurpassed ease of operation, or the stylish, handcrafted luxury finish? Or perhaps it's the famous culture of care that transforms owners into the 'Riviera family'? • The answer is all of the above, and more. Much, much more. Over 40 years of evolution and the creation of over 5,600 luxury motor yachts, the dedicated Riviera team have been on a continuous quest of evolution and refinement. • This remarkable heritage of knowledge matched by innovation allows us to craft the best of the time proven with the exciting and new. Witness our introduction of cutting edge touch screen digital technology and joystick manoeuvrability, which make navigating and operating a Riviera or Belize luxury motor yacht a relaxed and enjoyable experience. • Located on the Gold Coast, Queensland, our 14-hectare, state-of-the-art manufacturing facility is the largest facility of its kind in the Southern Hemisphere. Here we build on the qualities of strength, practicality and love of water in our continent which is completely surrounded by three oceans and four seas. • It is here that we test our designs in some of the toughest offshore conditions on earth. • Today, you can choose from five individual designs that make up our diverse collection of luxury motor yachts, the Riviera Flybridge, SUV, Sport Yacht or Sports Motor Yacht models, along with our more traditional Belize Collection. • We support all of our yachts with industry-leading warranties - 2-year express limited warranty and 7-year structural limited warranty. In addition, with all our Volvo Penta and MAN powered yachts, we offer a 5-year limited warranty. • Life is too short for needless compromise. So when it comes time to invest in your dream motor yacht, why settle for a lesser option when you can enjoy all that makes up a Riviera.





RivieraAustralia.com

